

## KE5



### Features

- The external damping spring has very good compensation for different heights when conveying workpieces.
- Large range of connection threads and lifting heights enables use for a wide variety of applications and suction pads.
- Spring damping and soft contact with sensitive workpieces.
- Abrasion resistant guide rod, longer life.

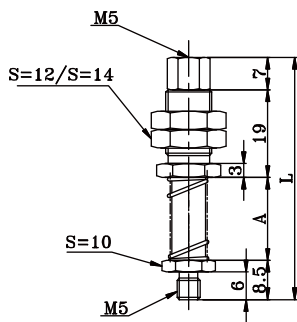
### Specifications

**KE 5 10 - □ - A10**

① ② ③ ④ ⑤

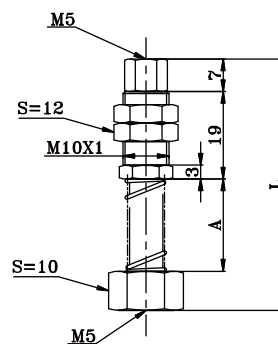
①Series	②Suction Cup Connection	③Lifting Heights	④Thread Type	□ Guide Bush Male Thread
KE-External damping spring	5-M5	10-10mm stroke 20-20mm stroke 25-25mm stroke	Blank-standard V-Female thread	A10-M10×1

### Main Dimension



KE510-A10

① ②



KE510-V-A10

①

①Lifting Heights	②Guide Bush Size	A	L
10	A10(A12)	18	52.5
20	A10(A12)	28	62.5

①Lifting Heights	A	L
10	20	54.5
20	30	64.5
25	35	69.5