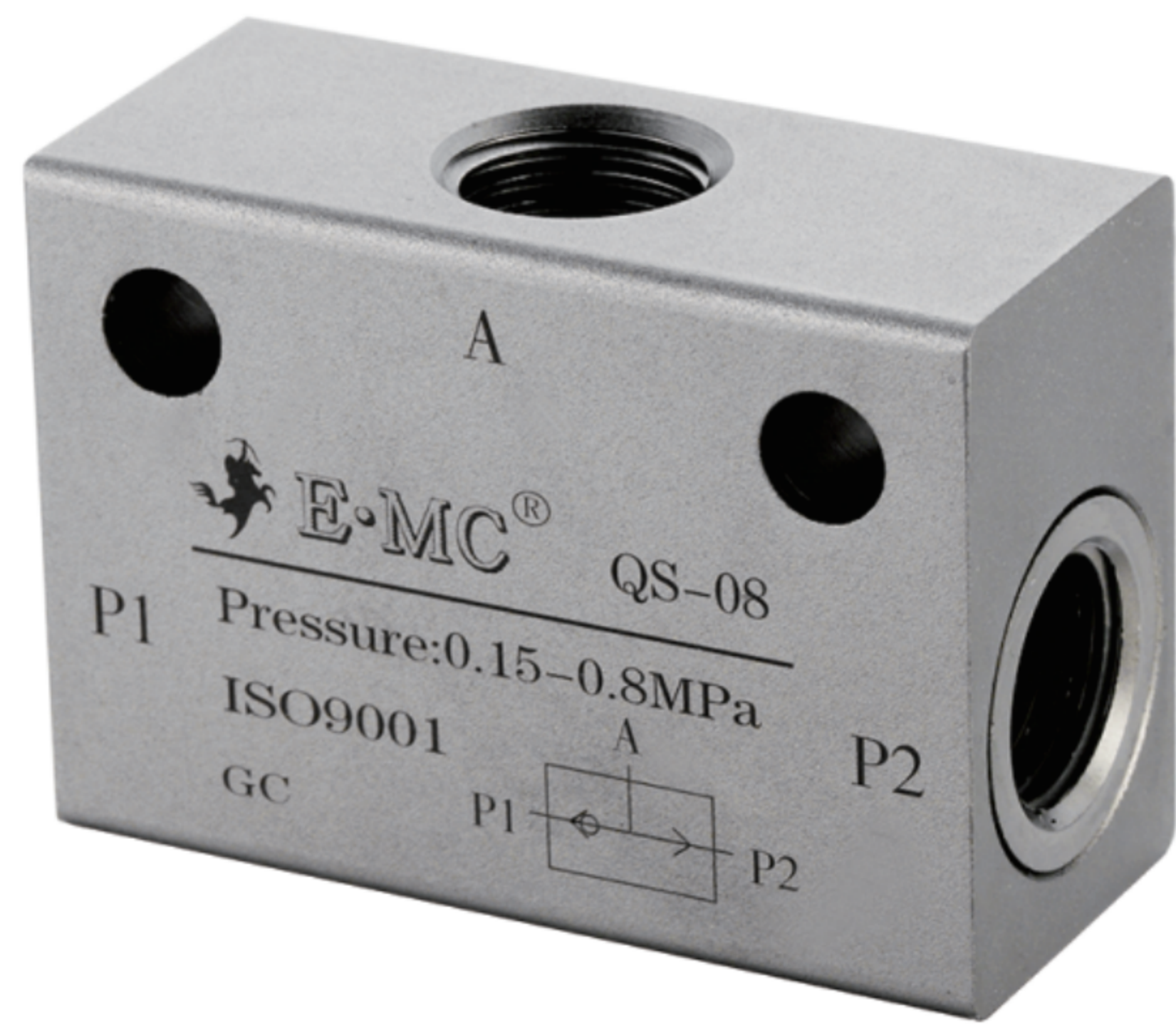
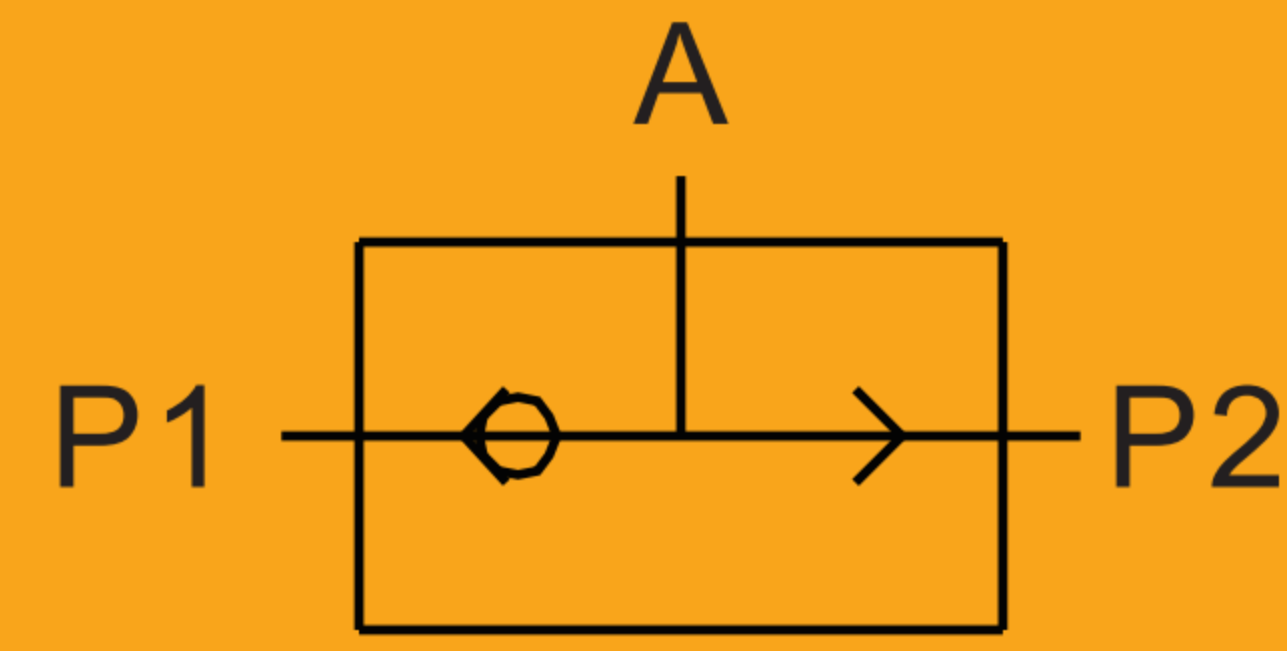


QS

Shuttle Valve



Specifications

| Model (mm) | QS-06 | QS-08 |
|---------------------------|-------------------------------------|-------|
| Working medium | Clean air(After 40 μ m filtration) | |
| Working Pressure (psi) | 0.15~0.8 | |
| Guaranteed pressure (psi) | 1.2 | |
| Working temperature(°F) | -20~70 | |
| Port size ① | 1/8" | 1/4" |
| Standard rated flow | P1: 700 | 2300 |
| The amount (L/min) | P2: 500 | 1700 |
| Weight(g) | 45 | 85 |

① G、PT、 NPT thread type is optional.

How to Order?

| Series No. | Port Size | Thread Type |
|------------------|--------------------|-------------------------------|
| QS:Shuttle valve | 06:1/8" 08:1/4" | Blank: G P : PT T : NPT |

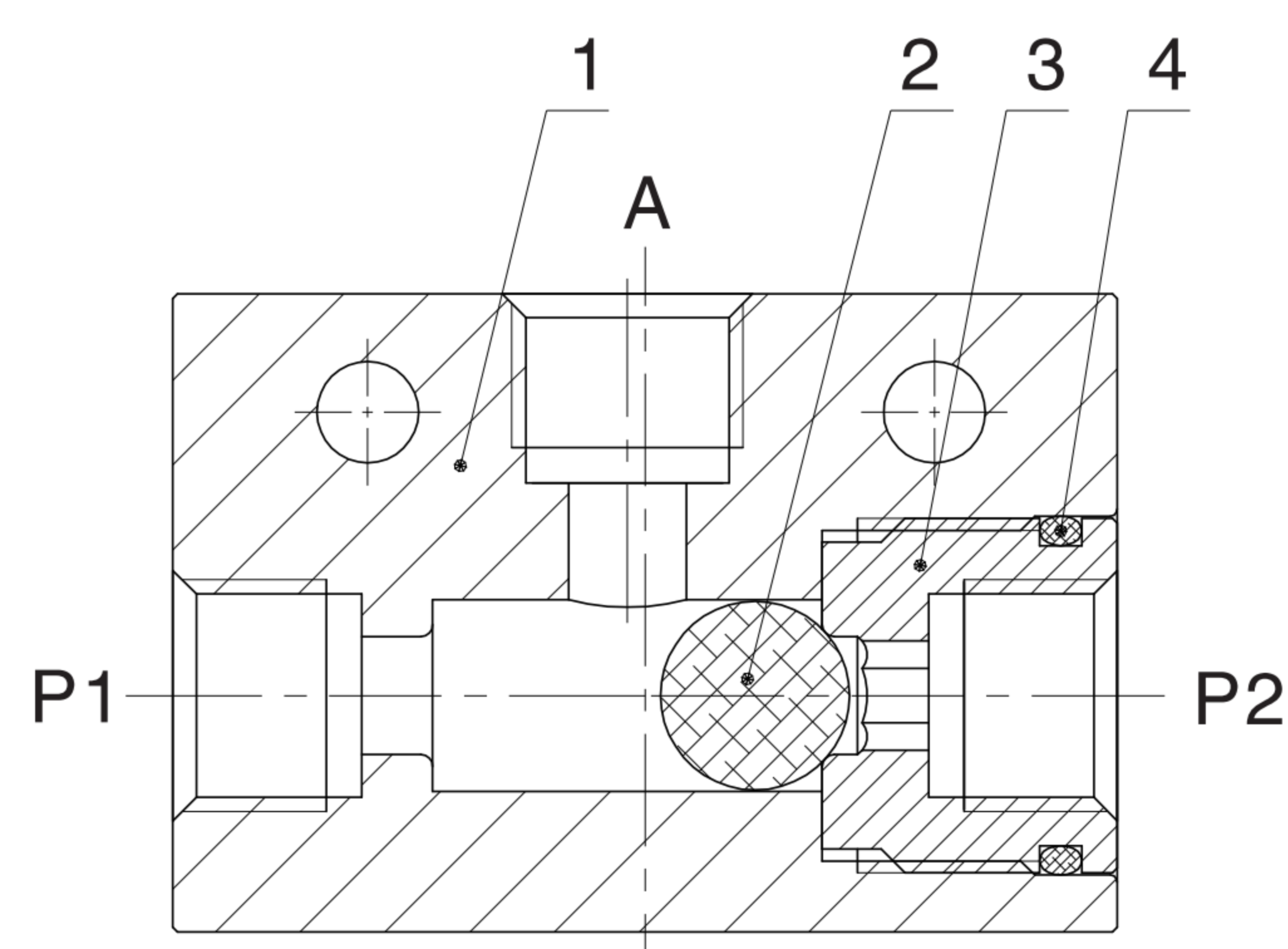
Order Example:

QS series shuttle valve, port size: 1/4", G thread, the ERP code is: QS-08

Product Features

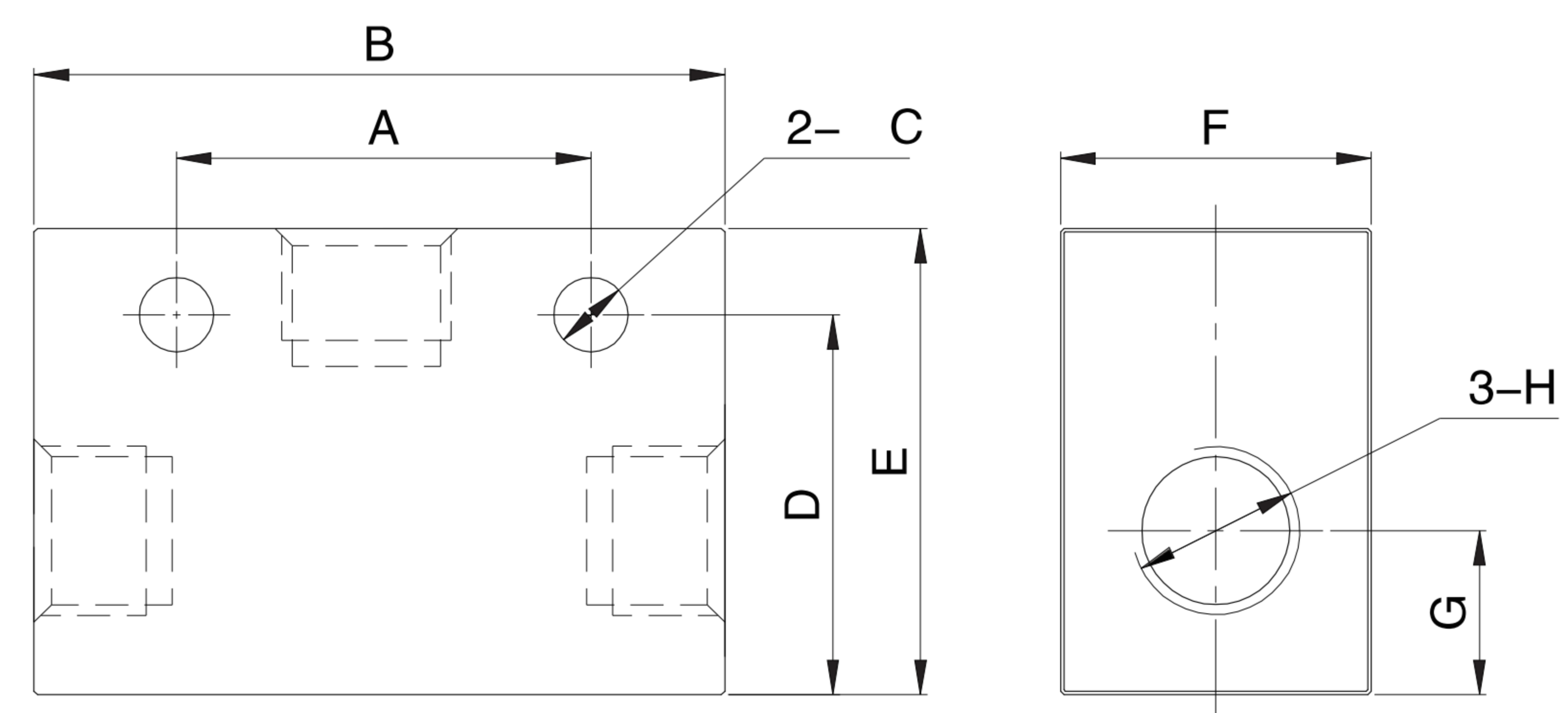
- * Normally working with main valve together, not be used separately.
- * Valve provides better assistance for completed control pneumatic system.

Internal Structure



| No. | Name |
|-----|-------------|
| 1 | Valve body |
| 2 | Rubber ball |
| 3 | End cover |
| 4 | O-ring |

Main Dimension



| Model | A | B | C | D | E | F | G | H |
|-------|----|----|-----|------|----|----|----|------|
| QS-06 | 24 | 40 | 4.3 | 22 | 27 | 18 | 10 | 1/8" |
| QS-08 | 35 | 50 | 6.5 | 27.5 | 35 | 22 | 13 | 1/4" |