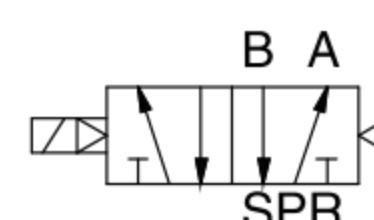


SR

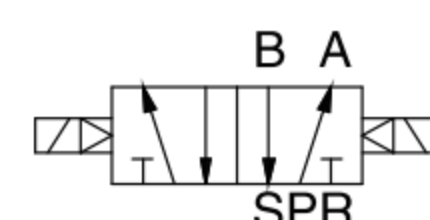
Integrated Manifold (Plug-in Type)



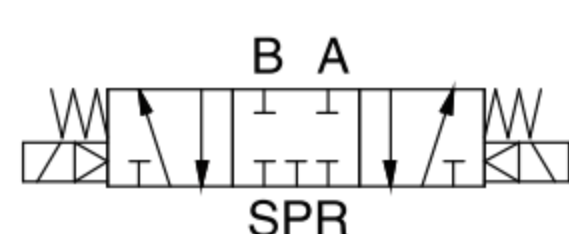
Single control



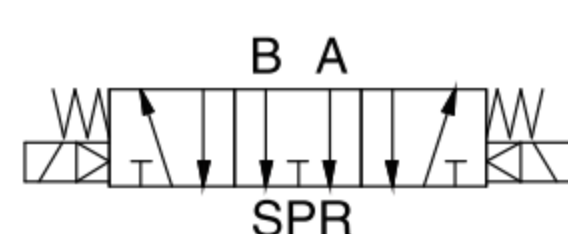
Double control



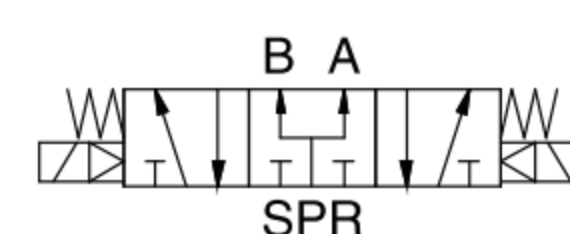
Center close



Center exhaust



Center Pressure



Product Features

- * Integrated valve manifold, integrated wiring, adopt 15-pin D-Sub connector, COM pin is universal for both positive pole and negative pole;
- * 5/2 ways single control, 5/2 ways double control, 5/3 ways can be integrated on same valve manifold;
- * Integrated valve manifold own double control core technical patent, initiative design;
- * Each connector with LED, more intuitive;
- * With DIN coils, more convenient in assembling & maintenance, low-power type is optional, achieve energy saving 80%;
- * Newly designed sub-base, installation size same as RV manifold, DIN guide rail assembly on optional.

How to Order?

SR Valve Group:

Series No.	Valve Body Size	ID code	Port Size	Voltage	Mounting Type	Thread Type
S: Common type SN: Low power type	1: 1 series 2: 2 series	R: RV series valve	M5: M5 06: 1/8" 08: 1/4"	E4:DC24V E5:DC12V (Only DC24V for low power type)	Blank: No accessory D: DIN guide rail clip with 1 meter DIN guide rail D0: DIN guide rail clip without DIN guide rail (DIN guide rail packed separately)	Blank: G P: PT T: NPT

Code	Function	Remark
S	5/2 single	assembly sequence, 1st link start from U side
D	5/2 double	
C	5/3 center closed	
P	5/3 center pressure	
E	5/3 center exhaust	
B	blind plate	

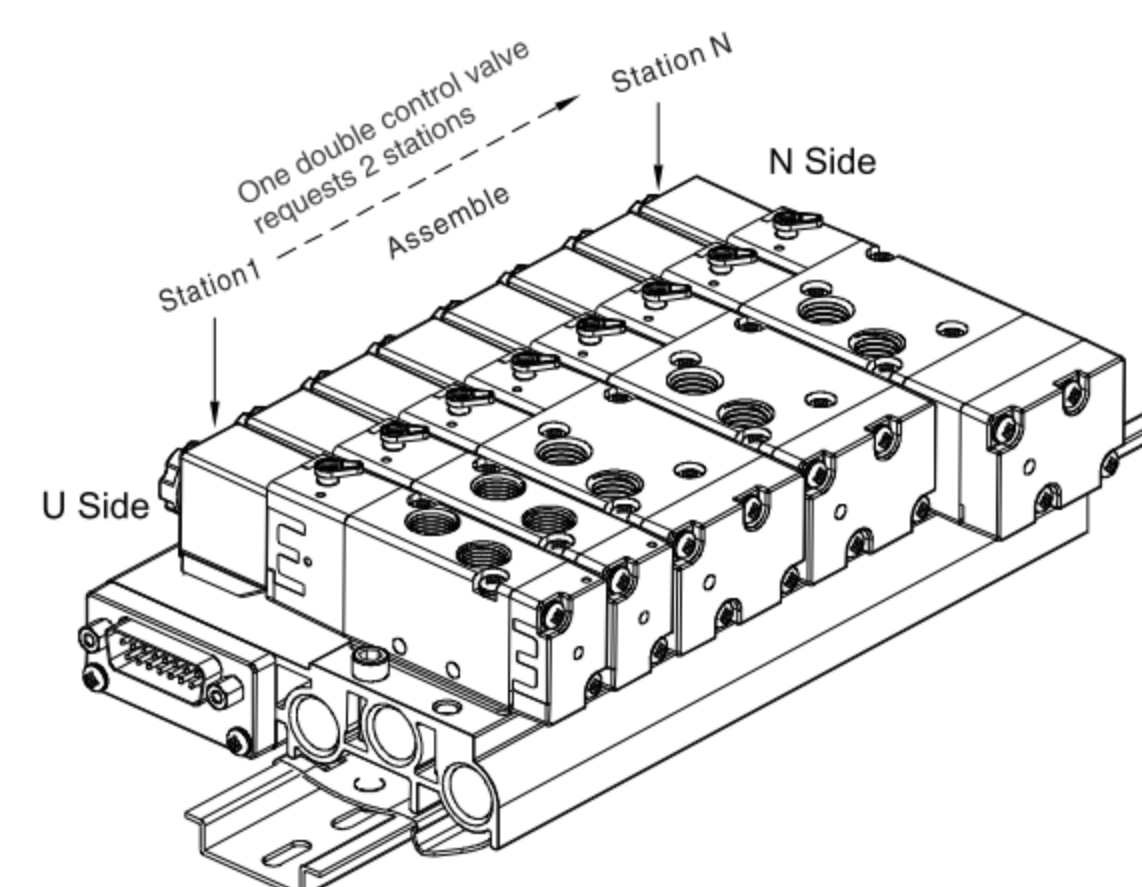
Qty
(suitable for same valve, single control 2~14 pieces double control 2~7 pieces)

(for mixed valves, maximum manifold is 14 stations
Note: double control valve request 2 stations)

Order Example:

SR series integrated manifold with same valves, 1 series valve body, RV series valve, 6 pieces valves, single control, 1/8 port size, voltage DC24V, without accessories, G thread, ERP code is: S1R-6S-06E4

SR series integrated manifold with different valves, 1 series valve body, RV series valve, station 1 and 2 are 5/2 single control valves, station 3,4,5,6 are 2 pieces 5/2 double control valves, station 7 and 8 are 1 piece 5/3 double control, center close valve, 1/8 port size, voltage DC24V, with clips and 1 meter DIN rail, G thread, ERP code is: S1R-2S2DC-06E4-D



Connecting Cable

Connector	Number of cable core	Length of cable	Injection molding type
D15: 15 pins D-sub Connector	15:15 cores (14 coils maximum) 08:8 cores (7 coils maximum)	1M: 1 meters 2M: 2 meters 3M: 3 meters Note: Length can be customized	A

Blind Plate

SRBP	52	1
SR series blind plate	5/2 way	1: 1 series 2: 2 series

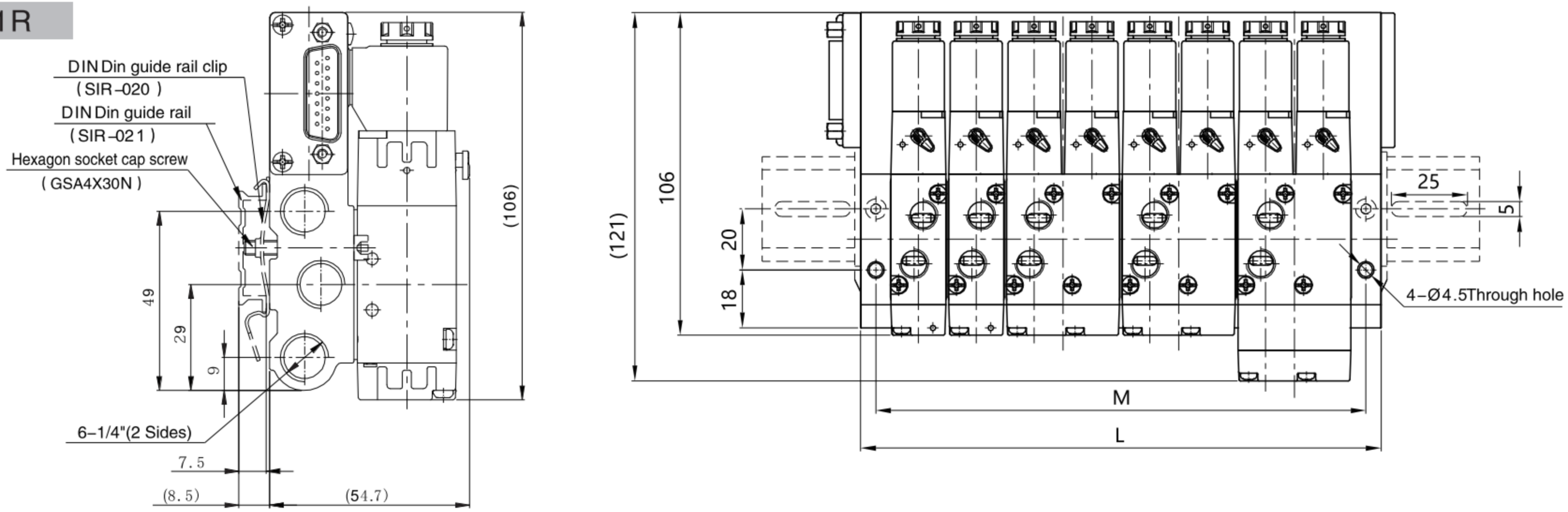
Order Example: SR series integrated manifold, Valve Group, Length of cable:3 meters, ERP code is: D15-15-3M

Specifications

Model No.	S1R-M5 SN1R-M5	S1R-06 SN1R-06	S2R-06 SN2R-06	S2R-08 SN2R-08
Port Size	M5	G1/8	G1/8	G1/4(Ex.G1/8)
Sectional area(mm ²)	2 ways: 5.5 (CV=0.31) 3 ways: 5.5 (CV=0.28)	2 ways: 12 (CV=0.67) 3 ways: 9 (CV=0.50)	2 ways: 14 (CV=0.78) 3 ways: 12 (CV=0.67)	2 ways: 16 (CV=0.89) 3 ways: 12 (CV=0.67)
Working medium	Clean air(After 40 μ m filtration)			
Acting type	Internal pilot type			
Reset type	Air reset			
Lubrication	Not required			
Working pressure(MPa)	0.15~0.8			
Guaranteed pressure(MPa)	1.2			
Working temperature(°C)	-20~70(No freezing)			
Voltage range	-15%~10%			
Power consumption	S1R: 2.8W ; SN1R: 0.6W		S2R: 3.0W ; SN2R: 0.7W	
Insulation class	Class F			
Max. acting frequency	2 positions: 5 Cycles/s; 3 positions: 3 Cycles/s			
Activate time(S)	Within 25ms			
Weight(g)	S1R5212: 196 ; S1R5312: 230		S2R5222: 351 ; S2R5322: 409	

◎ Main Dimension

S1R



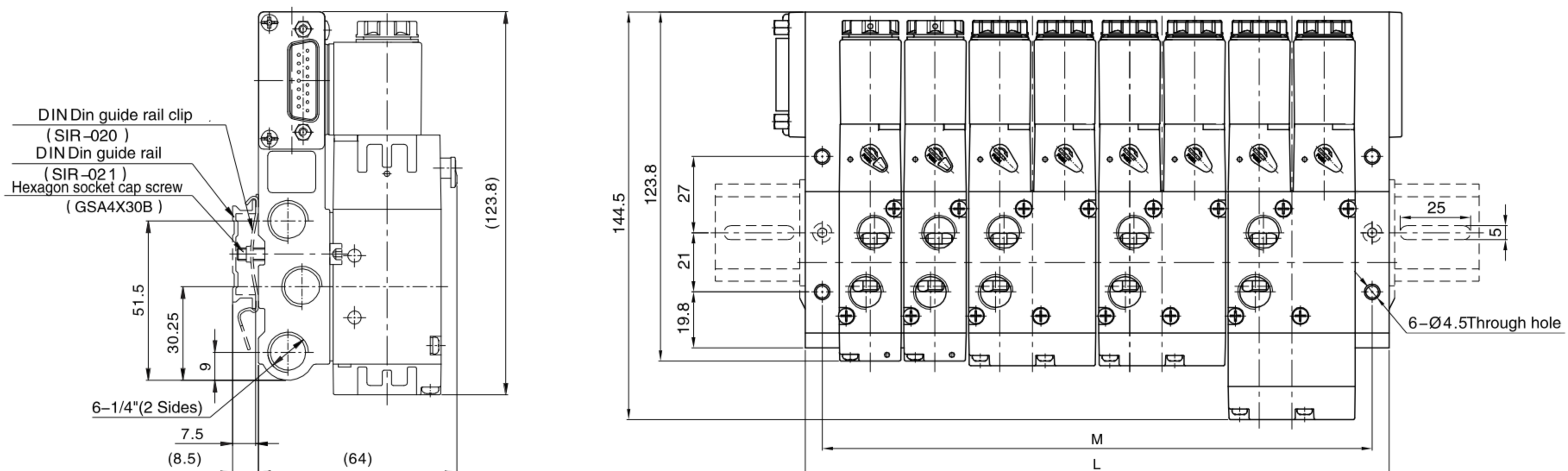
* The hole positions of Din guide rail can't be specified, its may change randomly.

Sign/Model	S1R3S	S1R4S	S1R5S	S1R6S	S1R7S	S1R8S	S1R9S	S1R10S	S1R11S	S1R12S	S1R13S	S1R14S
L	76	95	114	133	152	171	190	209	228	247	266	285
M	66	85	104	123	142	161	180	199	218	237	256	275

(mm)

◎ Main Dimension

S2R



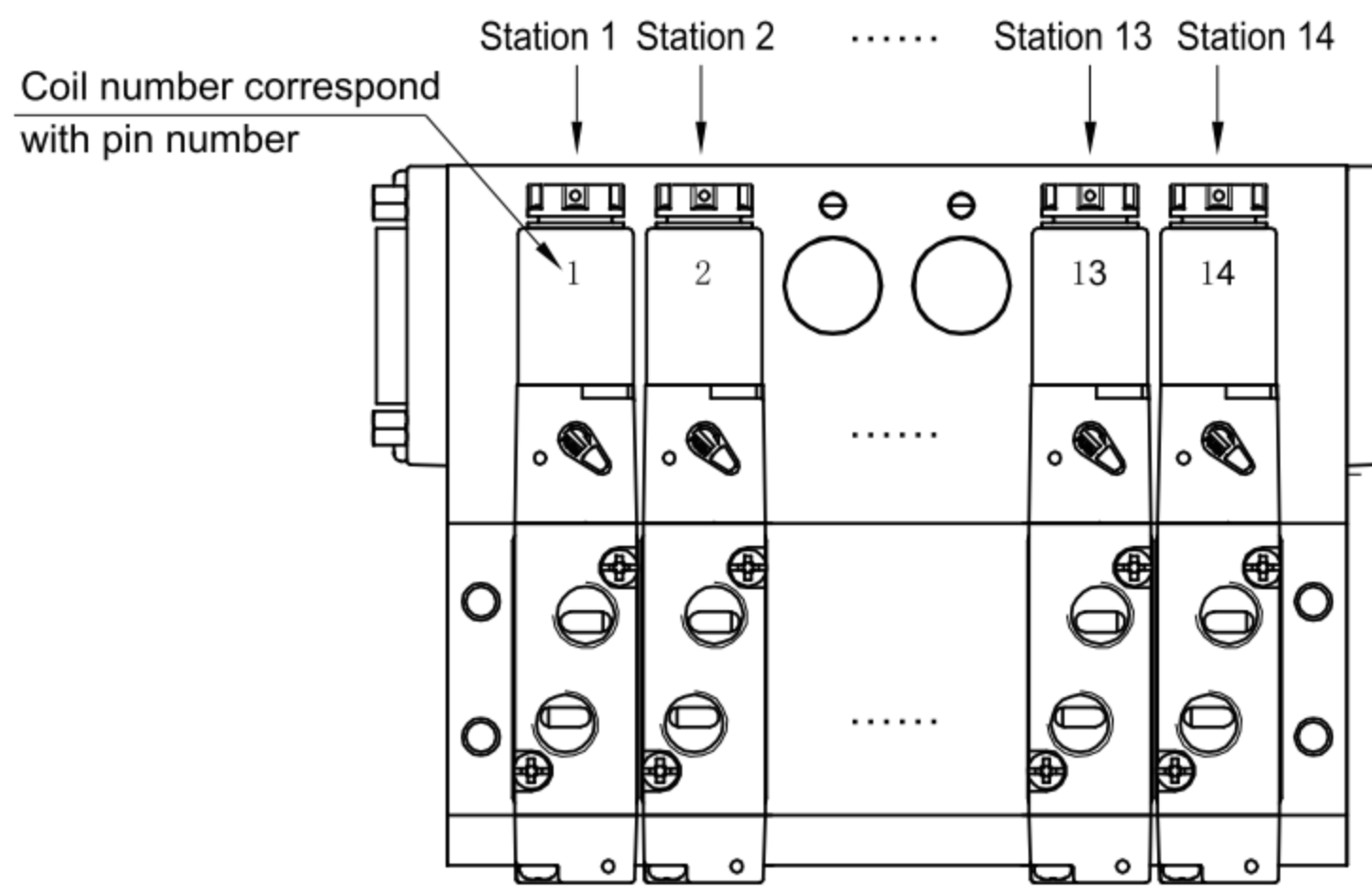
*The hole positions of Din guide rail can't be specified, its may change randomly.

Sign/Model	S2R3S	S2R4S	S2R5S	S2R6S	S2R7S	S2R8S	S2R9S	S2R10S	S2R11S	S2R12S	S2R13S	S2R14S
L	92	115	138	161	184	207	230	253	276	299	322	345
M	80	103	126	149	172	195	218	241	264	287	310	333

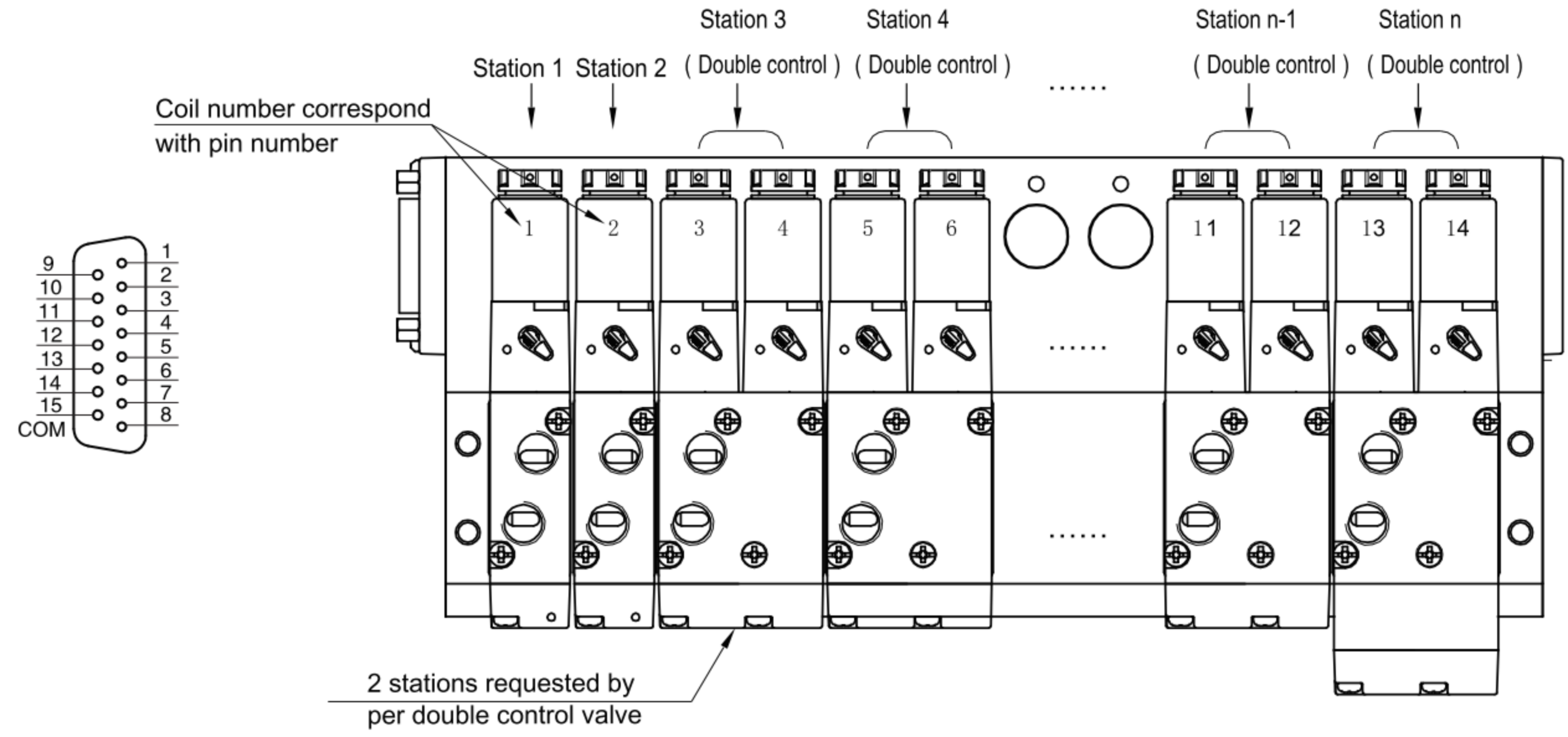
(mm)

Internal Wiring Diagram

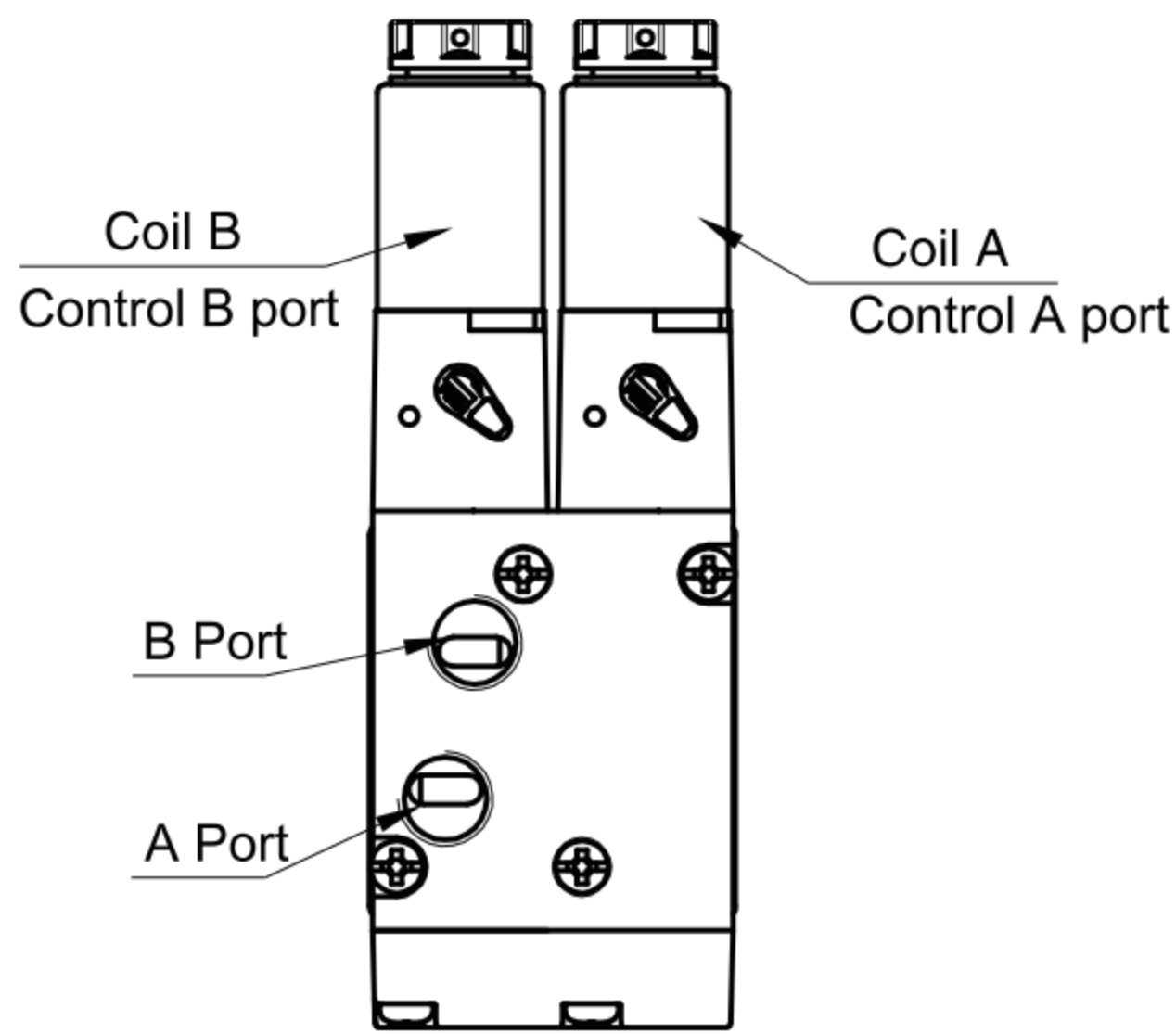
Wiring diagram of single control valves (14 stations maximum)



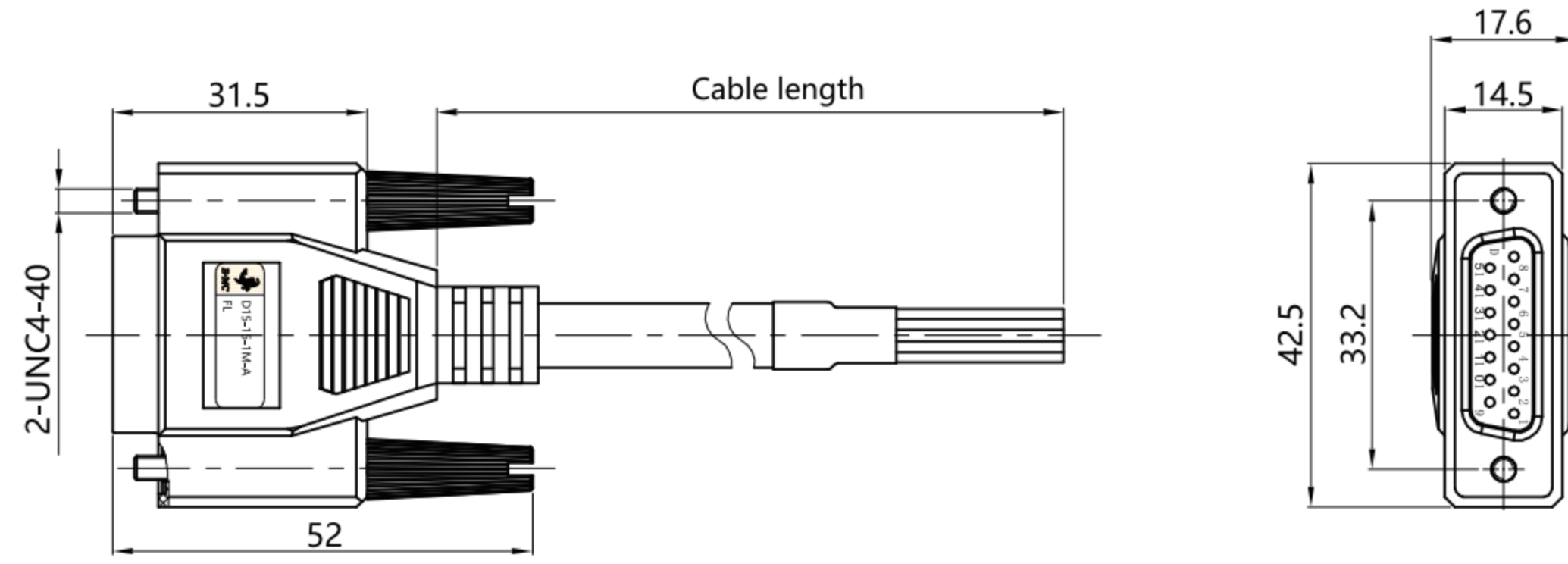
Wiring diagram of mixed single control and double control



Coil Specification



Wiring diagram and specification for cable of SR series



Connecting cable pin diagram	PIN number & Wire Color		
	Pin number	Wire color	
	1	Red and black	Red
	2	Red	Yellow
	3	Orange and black	Blue
	4	Orange	Orange
	5	Yellow and black	Purple
	6	Yellow	Brown
	7	Pink	Green
	8	Blue	---
	9	Green	---
	10	Light green	---
	11	Purple	---
	12	White	---
	13	Brown	---
	14	Gray	---
	15(COM)	Black	Black

Flow Chat

