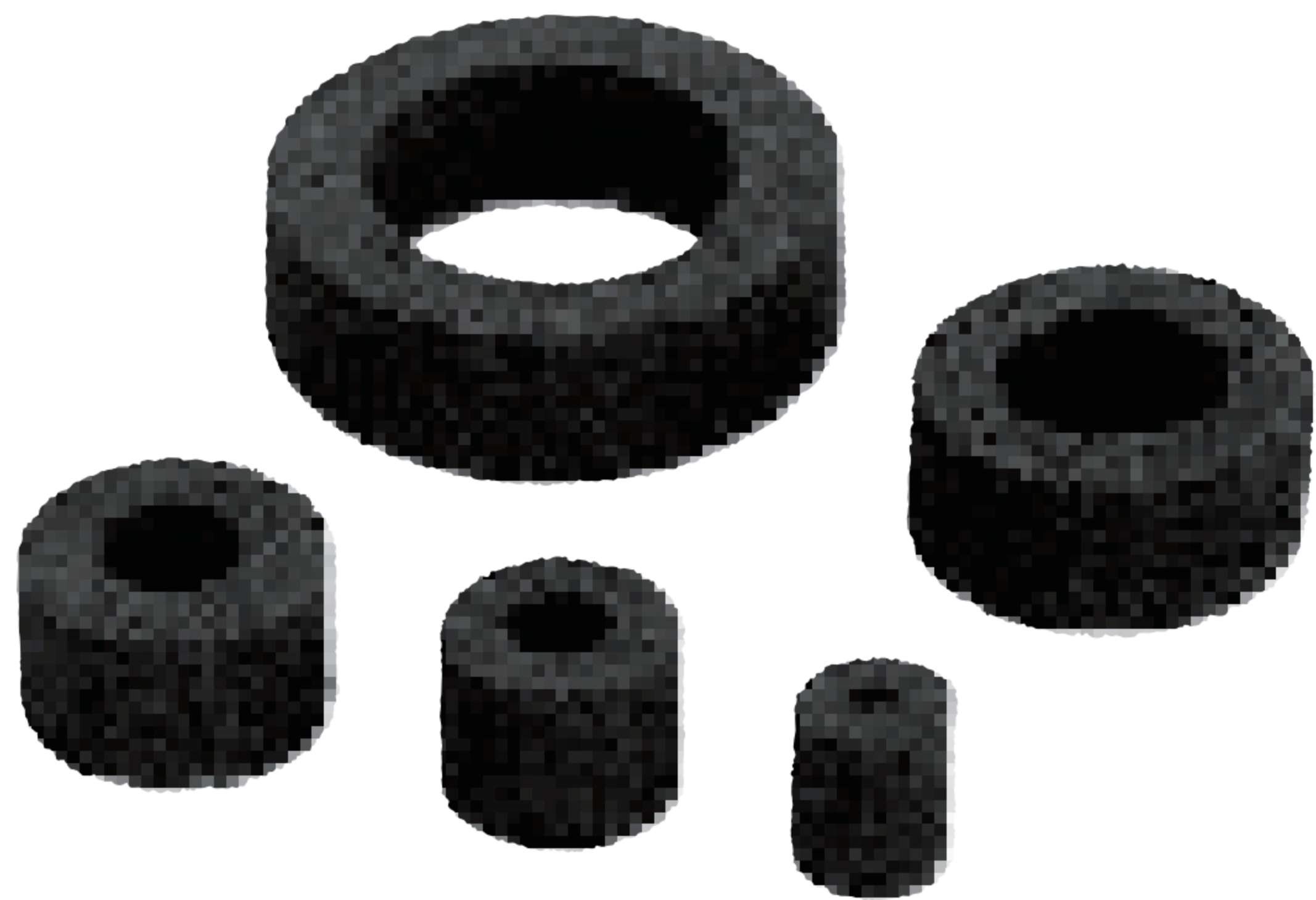


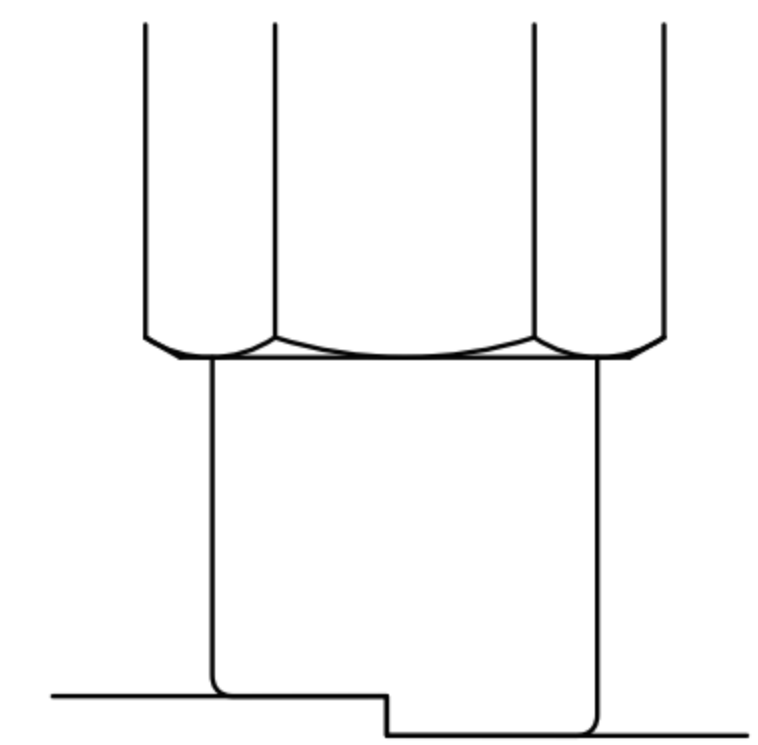
SZP2 Series

How to Order?



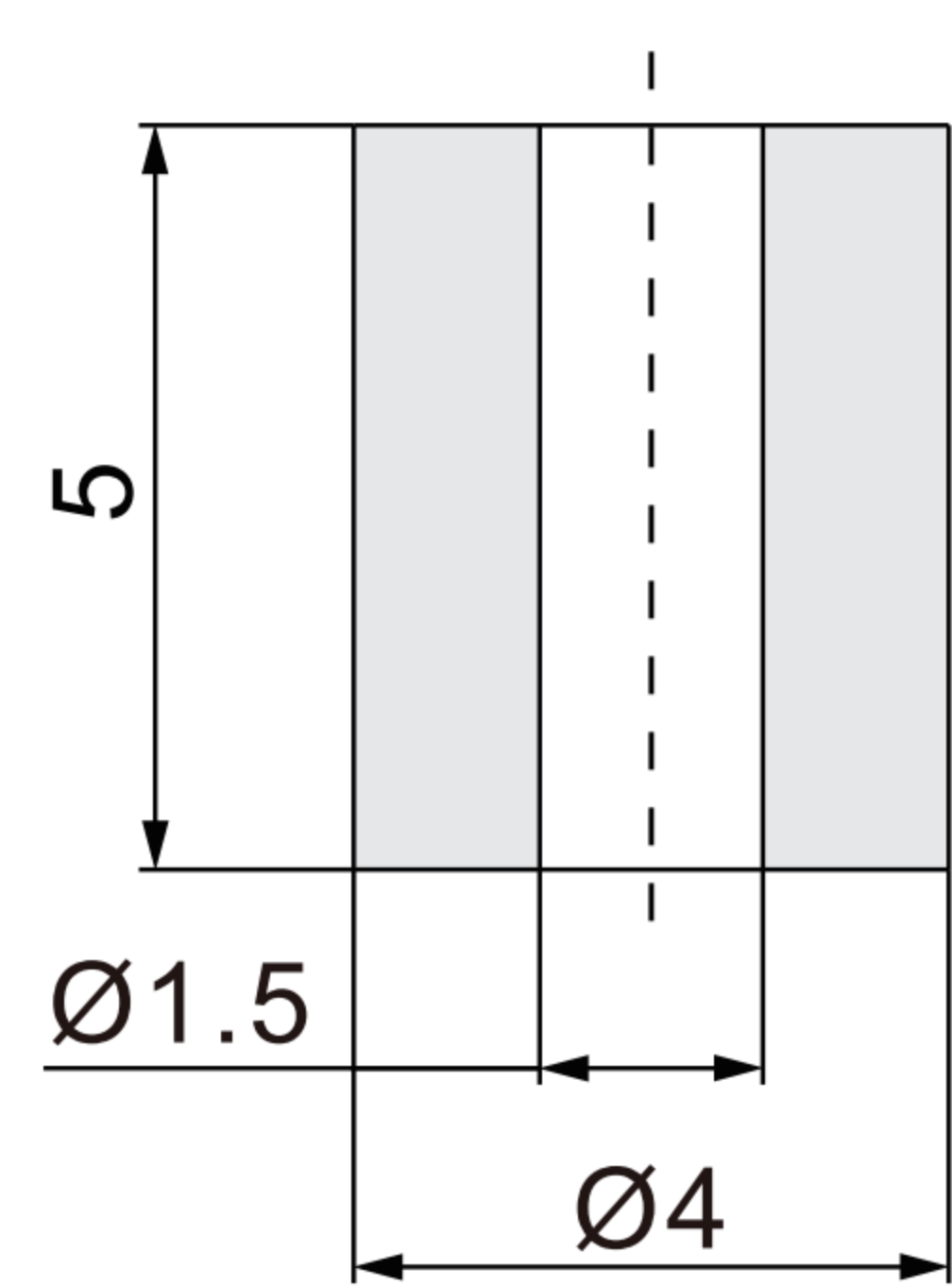
Series No.	Pad Diameter	Pad Material
SZP2: SZP2 Series	04: Ø4 06: Ø6 08: Ø8 10: Ø10 15: Ø15	S: Sponge

Workpieces for bump suction

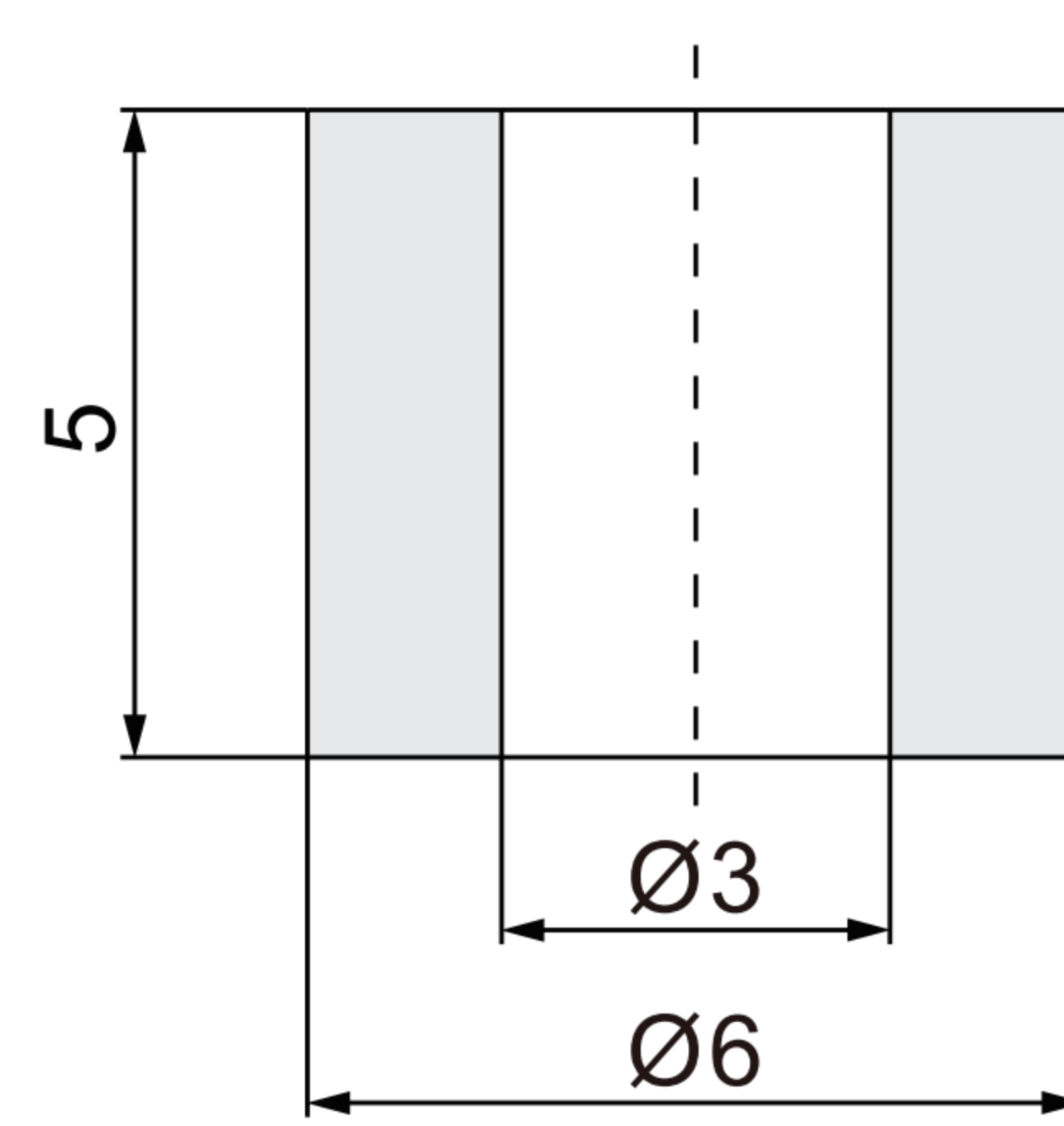


Order Example: SZPY series vacuum pad, pad diameter $\phi 6$, pad material: sponge.
ERP code is SZP2-06S

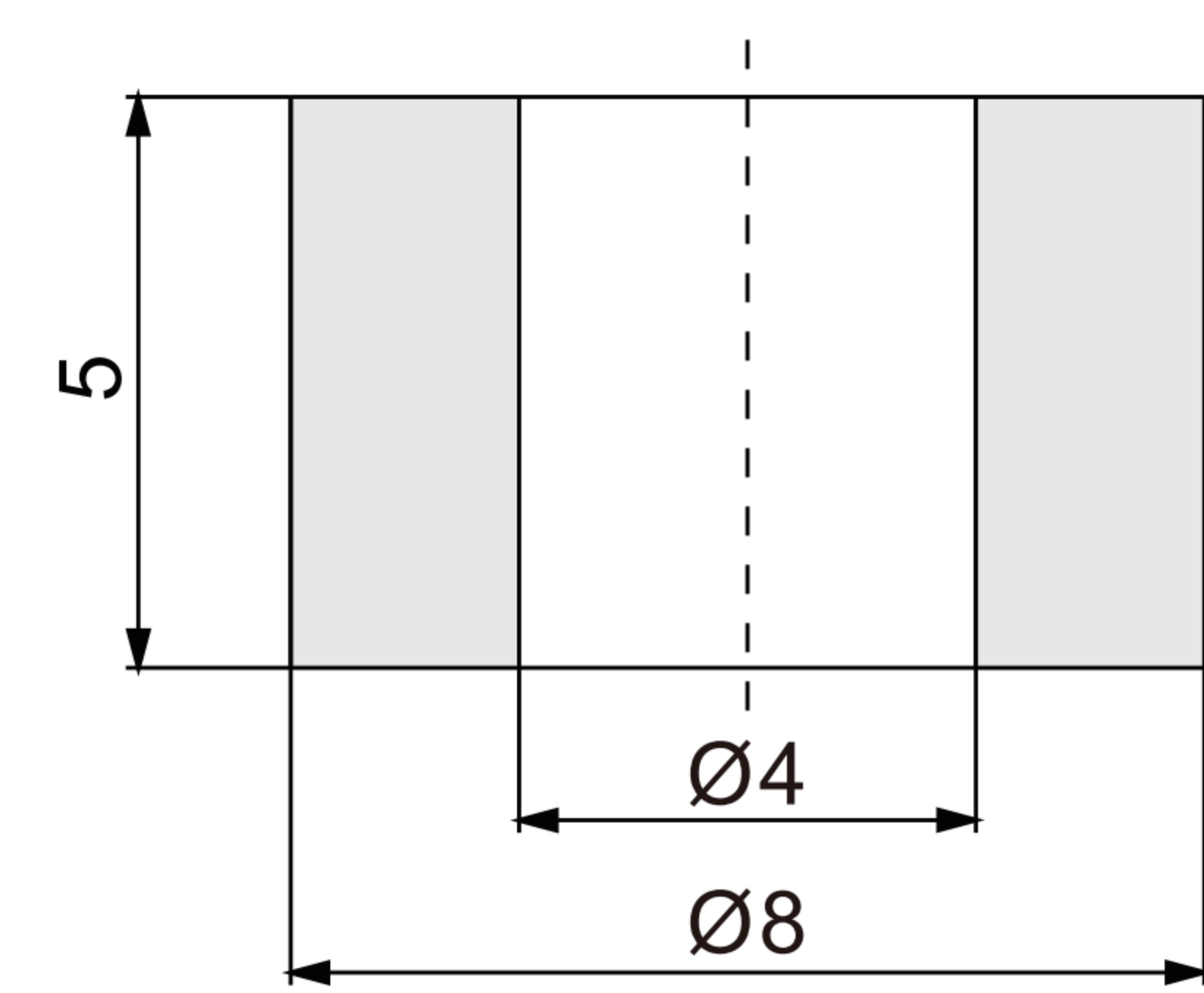
Main Dimension



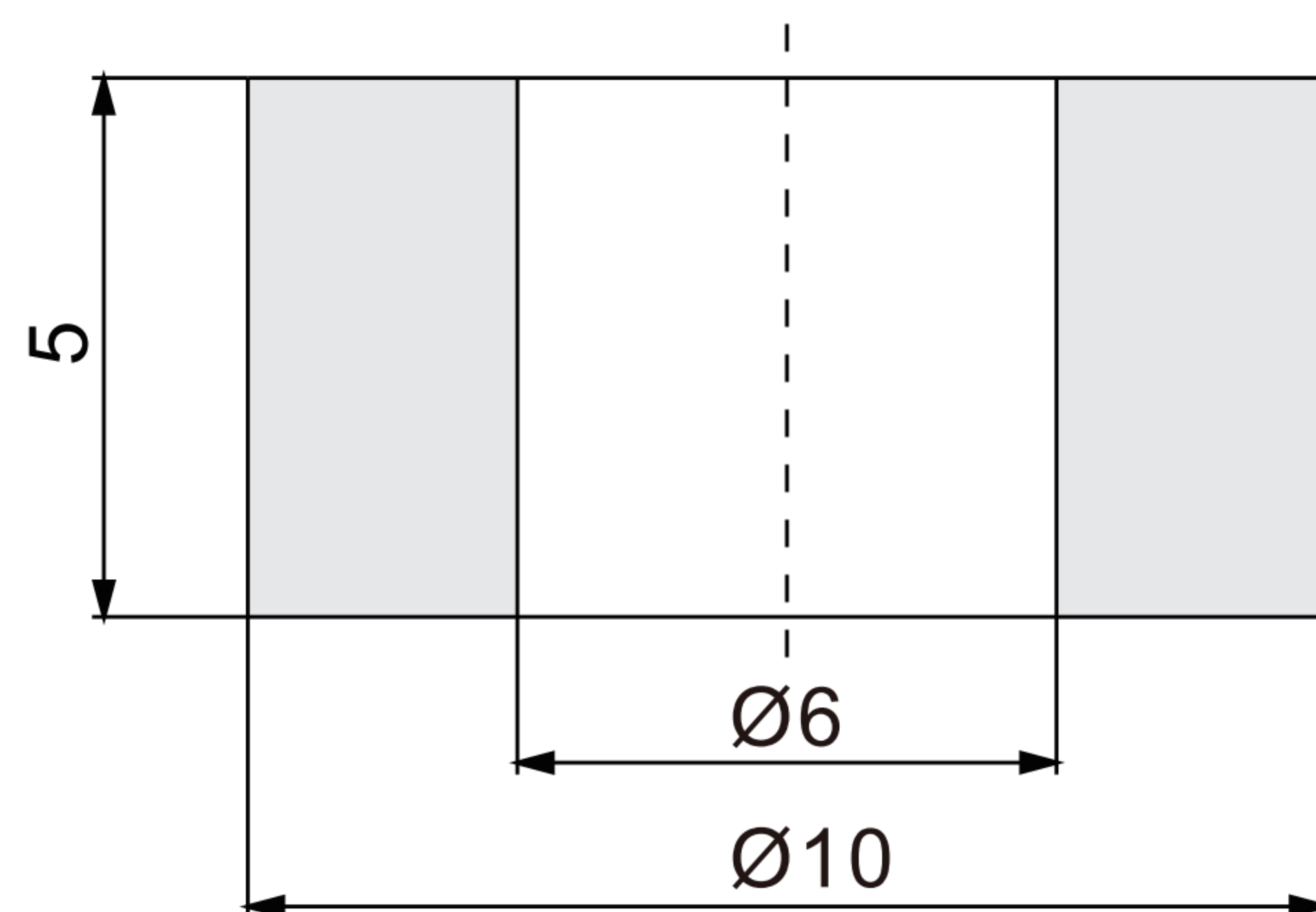
SZP2-04S



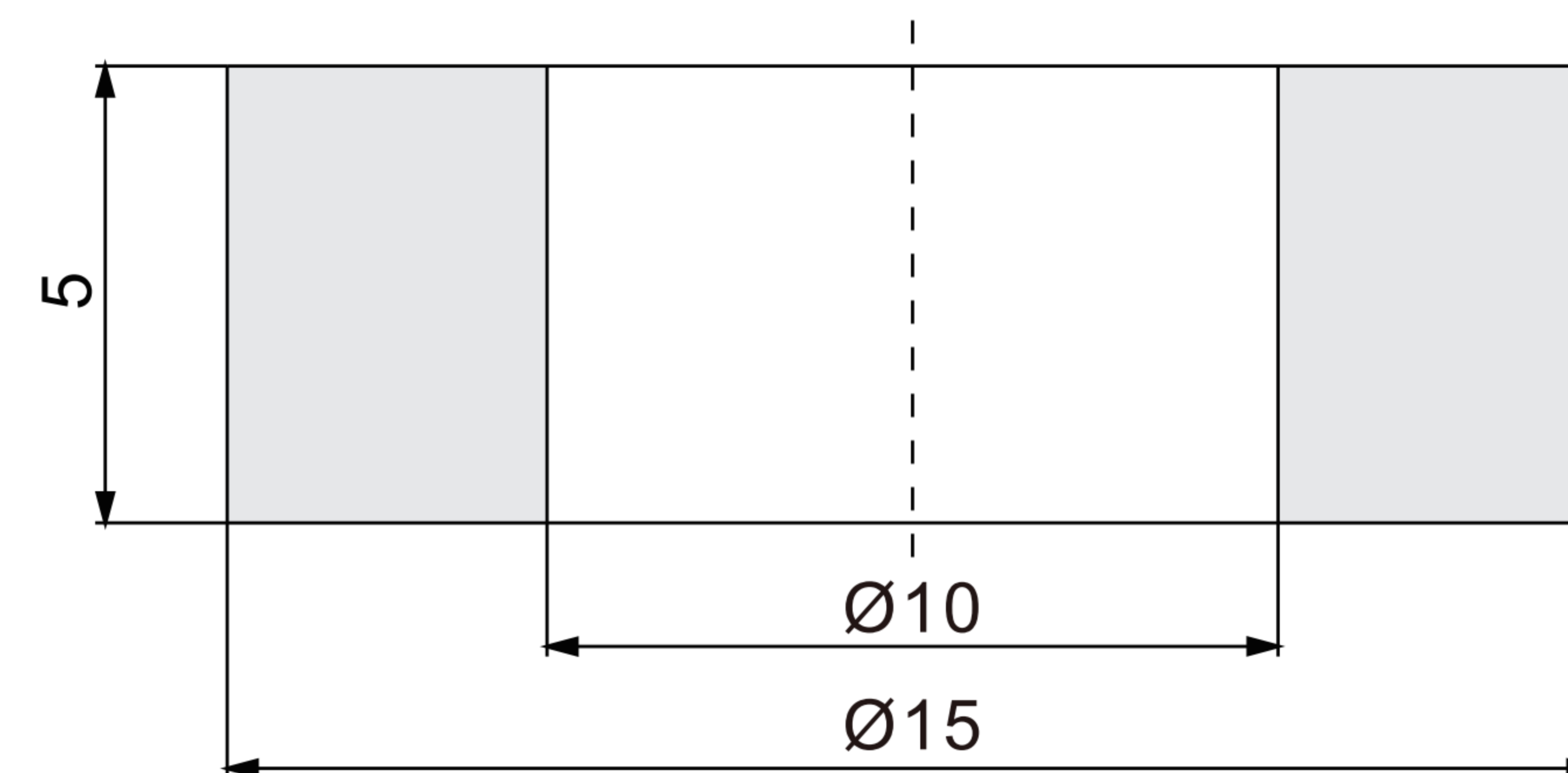
SZP2-06S



SZP2-08S

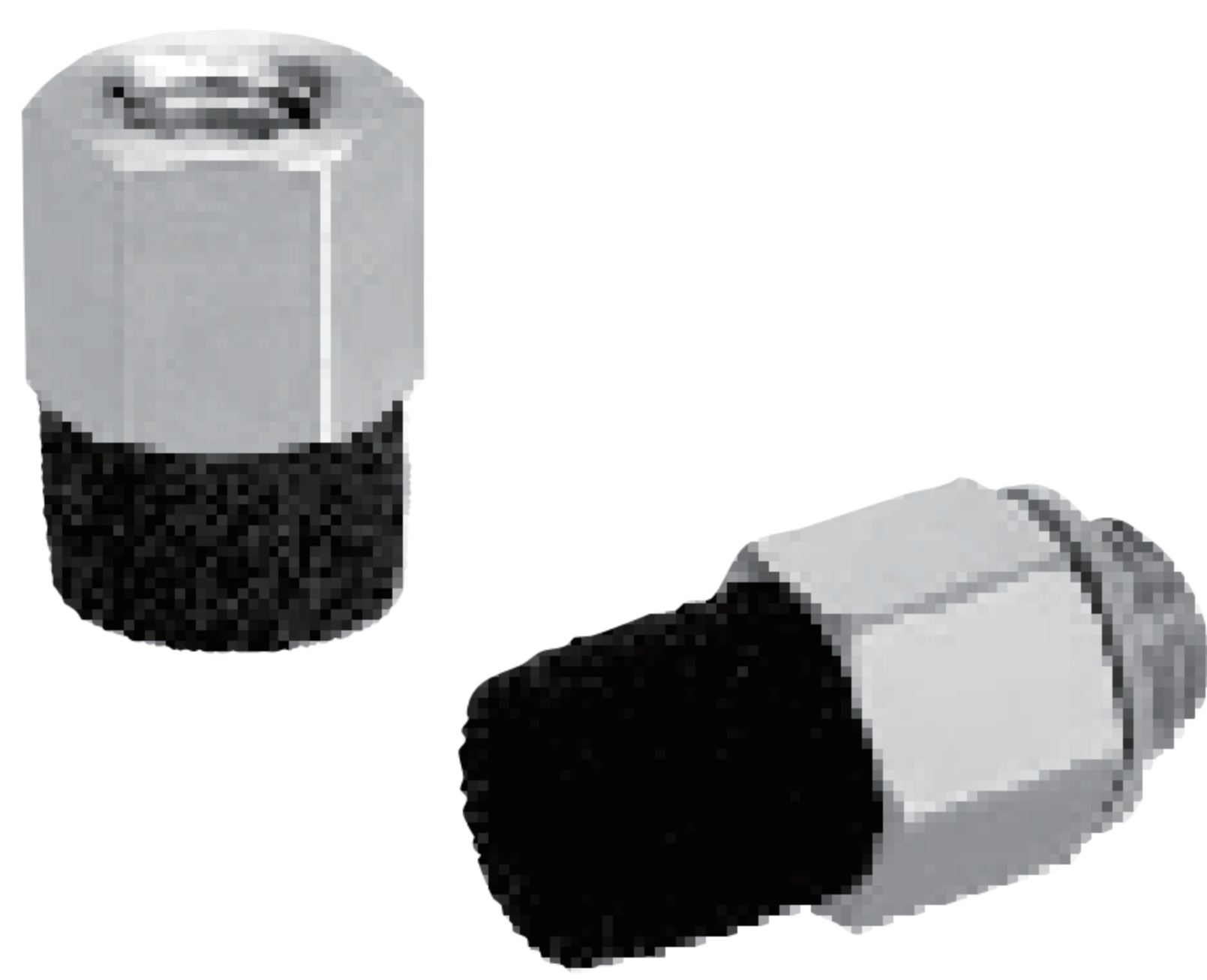


SZP2-10S



SZP2-15S

How to Order?



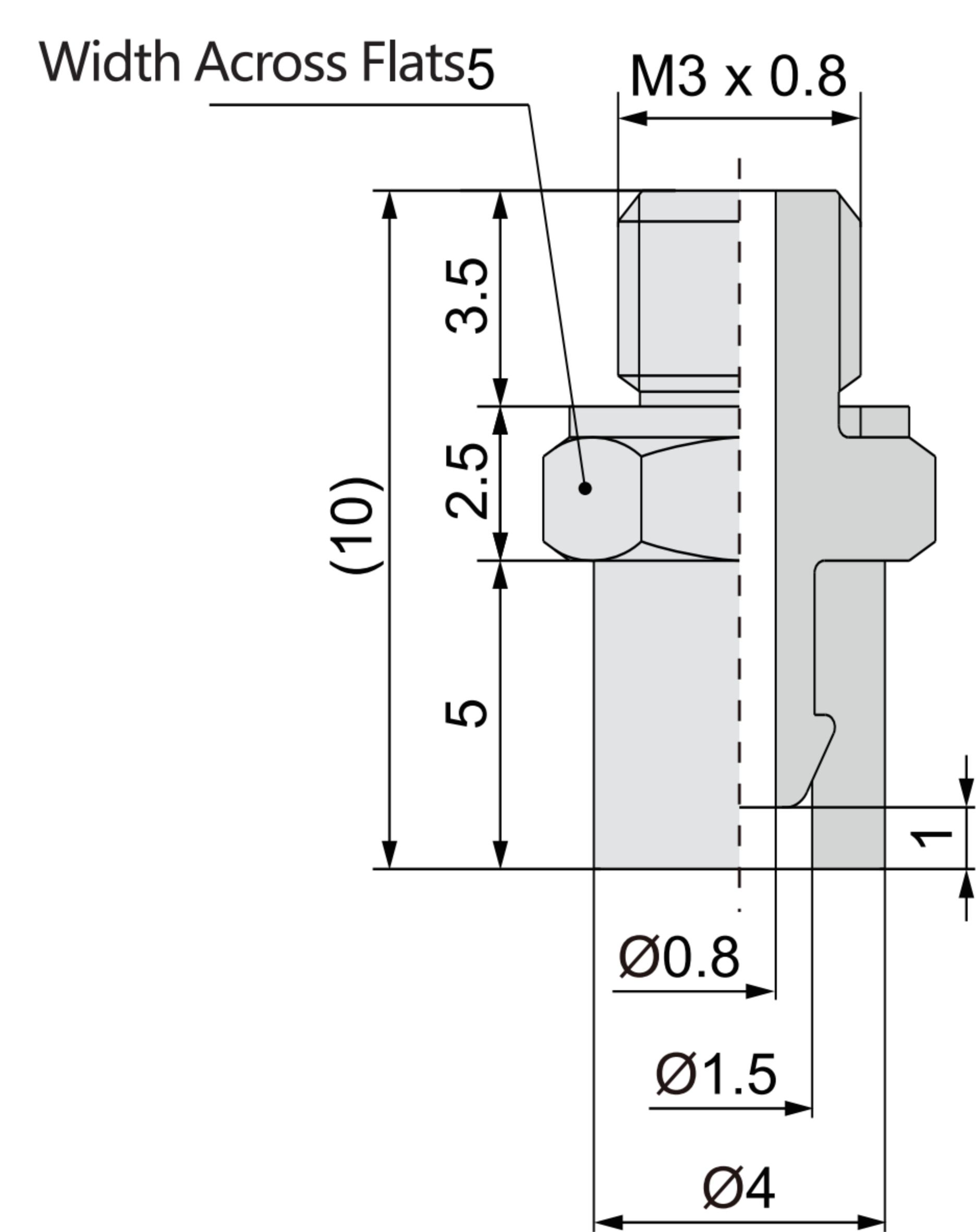
Series No.	Vacuum Inlet Direction S	Pad Diameter	Pad Model	Installation Method
SZP2: SZP2 Series	T: Direction Vertical	04: Ø4 06: Ø6 08: Ø8 10: Ø10 15: Ø15	S: Sponge	

Replacement Part Model		
Model	Pad Model	Adapter Type
SZP2-T04S-A3	SZP2-04S	SZP2A-S01P
SZP2-T06S-A5	SZP2-06S	SZP2A-S02P
SZP2-T08S-A5	SZP2-08S	SZP2A-S03P
SZP2-T10S-A5	SZP2-10S	SZP2A-S04P
SZP2-T15S-A3	SZP2-15S	SZP2A-S05P
SZP2-T04S-B3	SZP2-04S	SZP2A-S11
SZP2-T06S-B5	SZP2-06S	SZP2A-S12
SZP2-T08S-B5	SZP2-08S	SZP2A-S13
SZP2-T10S-B5	SZP2-10S	SZP2A-S14
SZP2-T15S-B3	SZP2-15S	SZP2A-S15

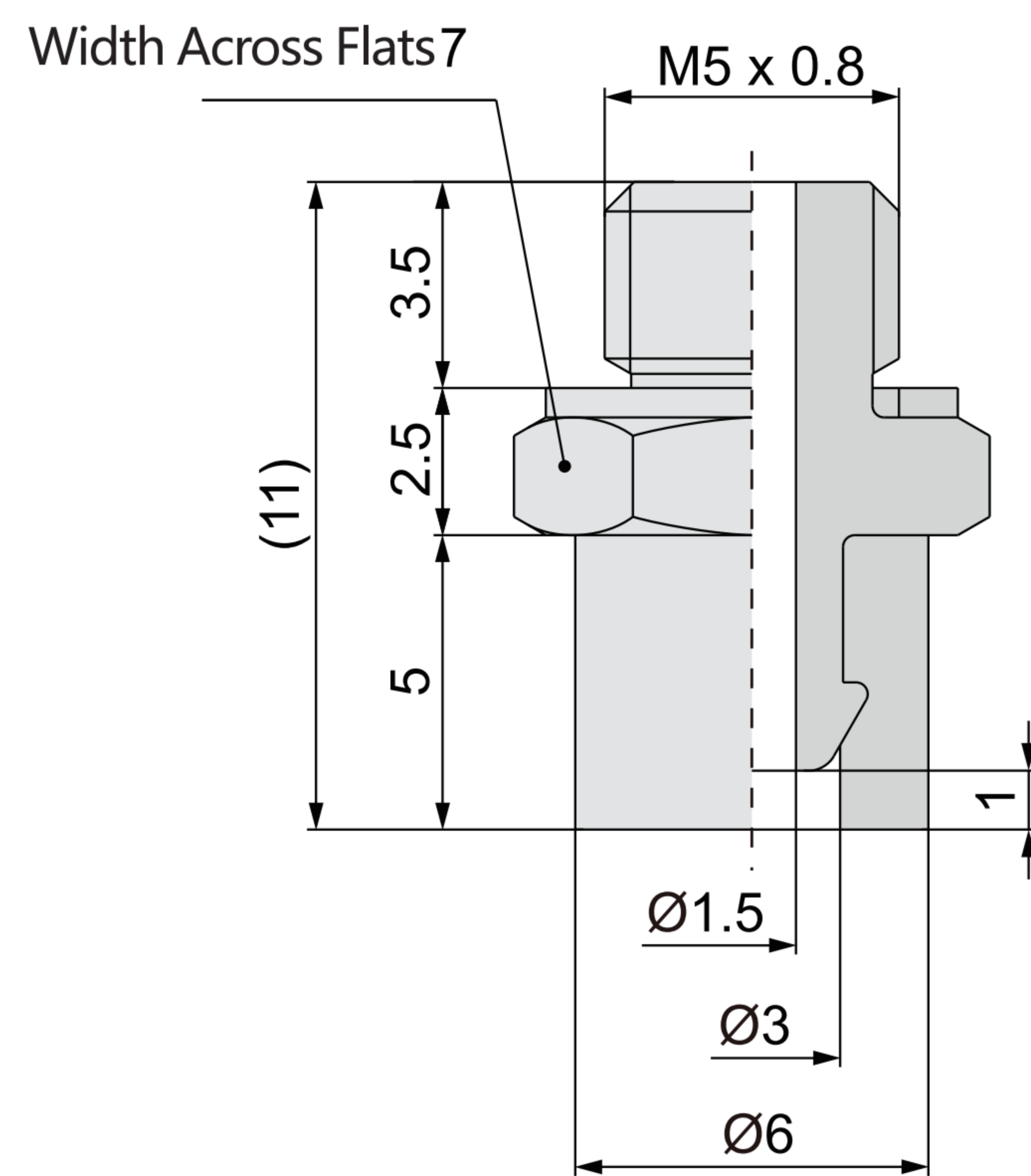
Code	Thread Size	Suitable Diameter				
		Ø4	Ø6	Ø8	Ø10	Ø15
A3	M3X0.5	•				
A5	M5X0.8		•	•	•	•
B3	M3X0.5	•				
B5	M5X0.8		•	•	•	•

订货举例: SZP2系列真空吸盘, 垂直真空口方向, 吸盘直径 $\phi 6$, Pad Model: 海绵; 安装螺纹尺寸M5 \times 0.8. 其订购码为: SZP2-T06S-A5

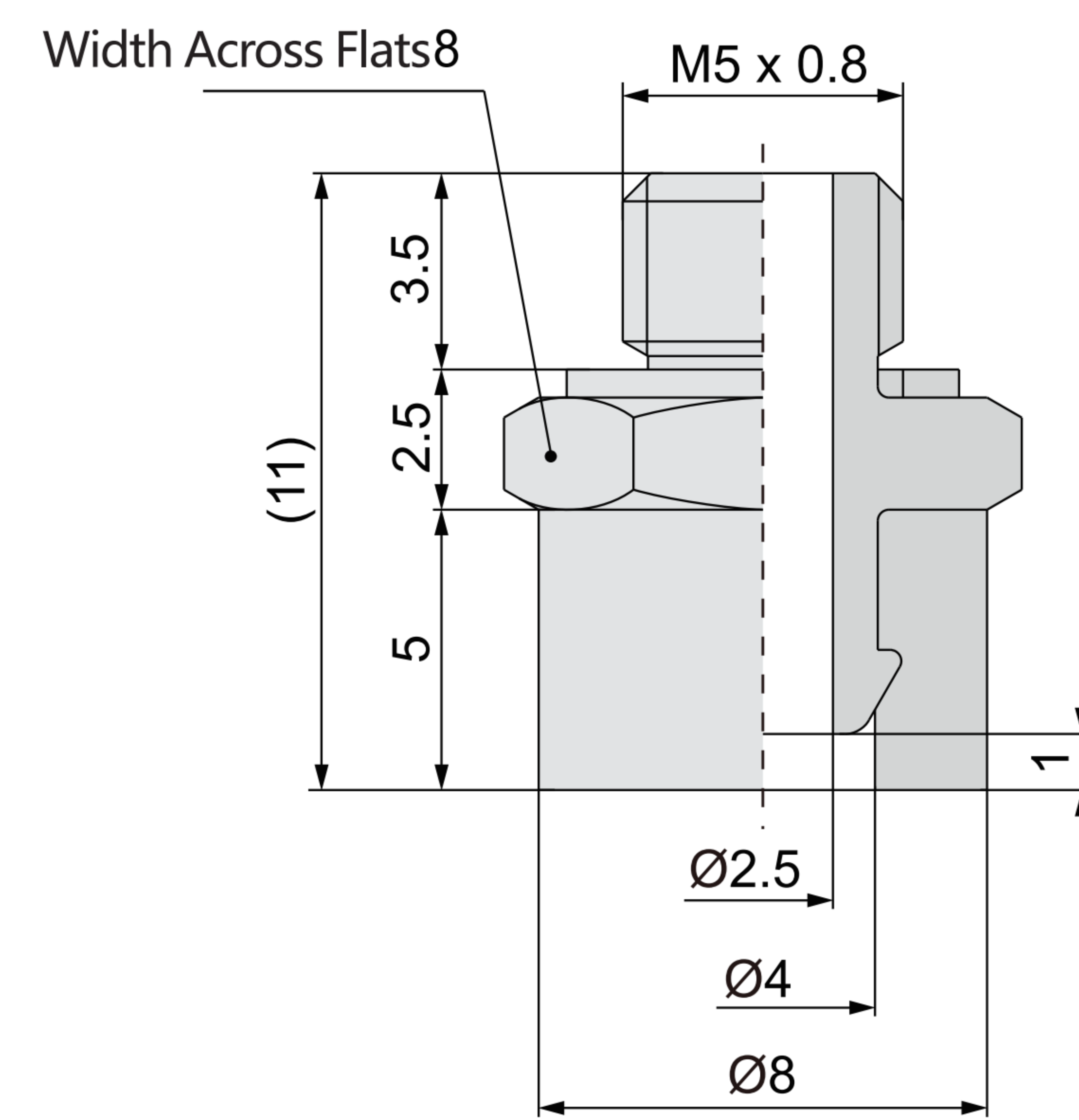
◎ Main Dimension



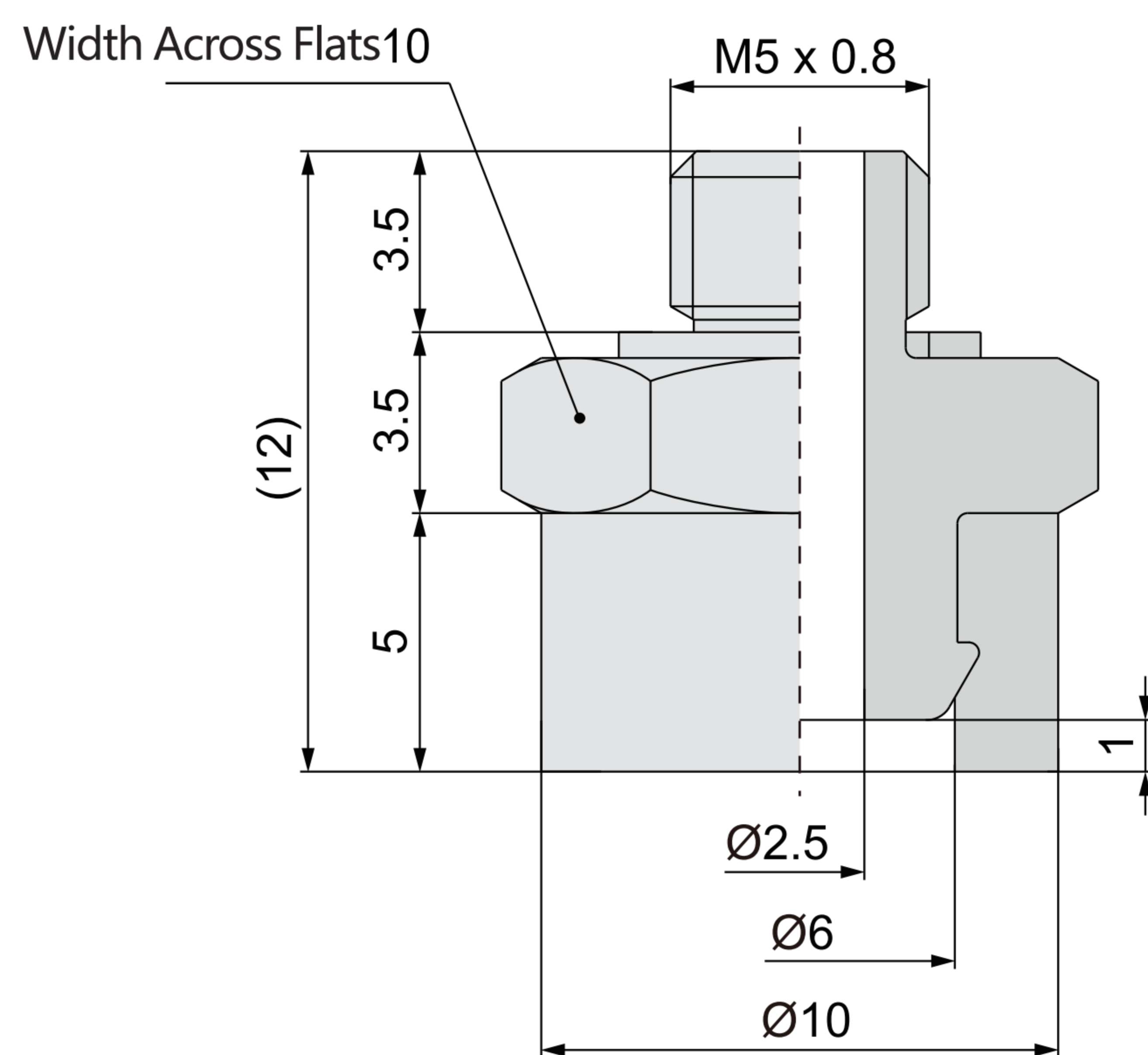
SZP2-T04S-A3



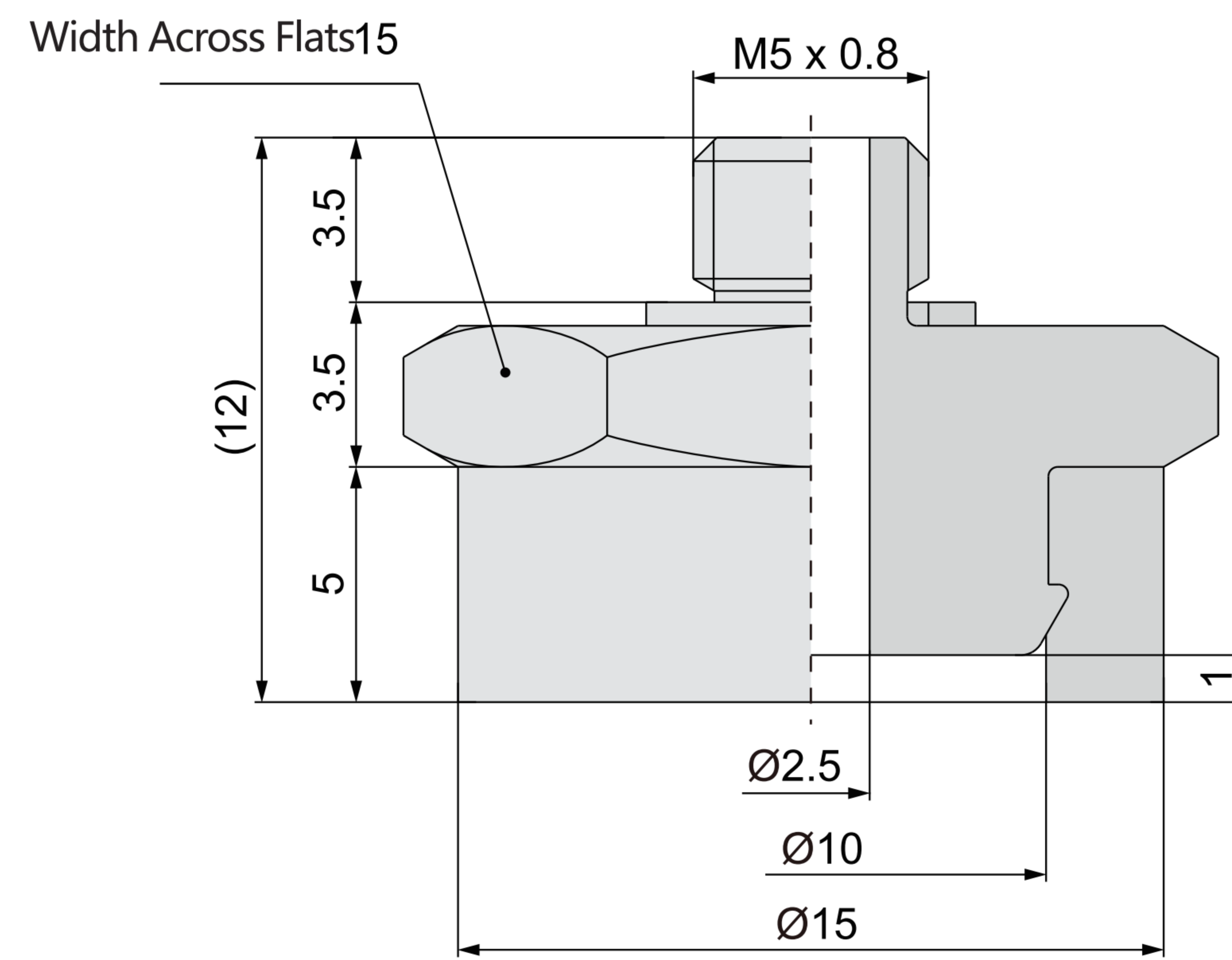
SZP2-T06S-A5



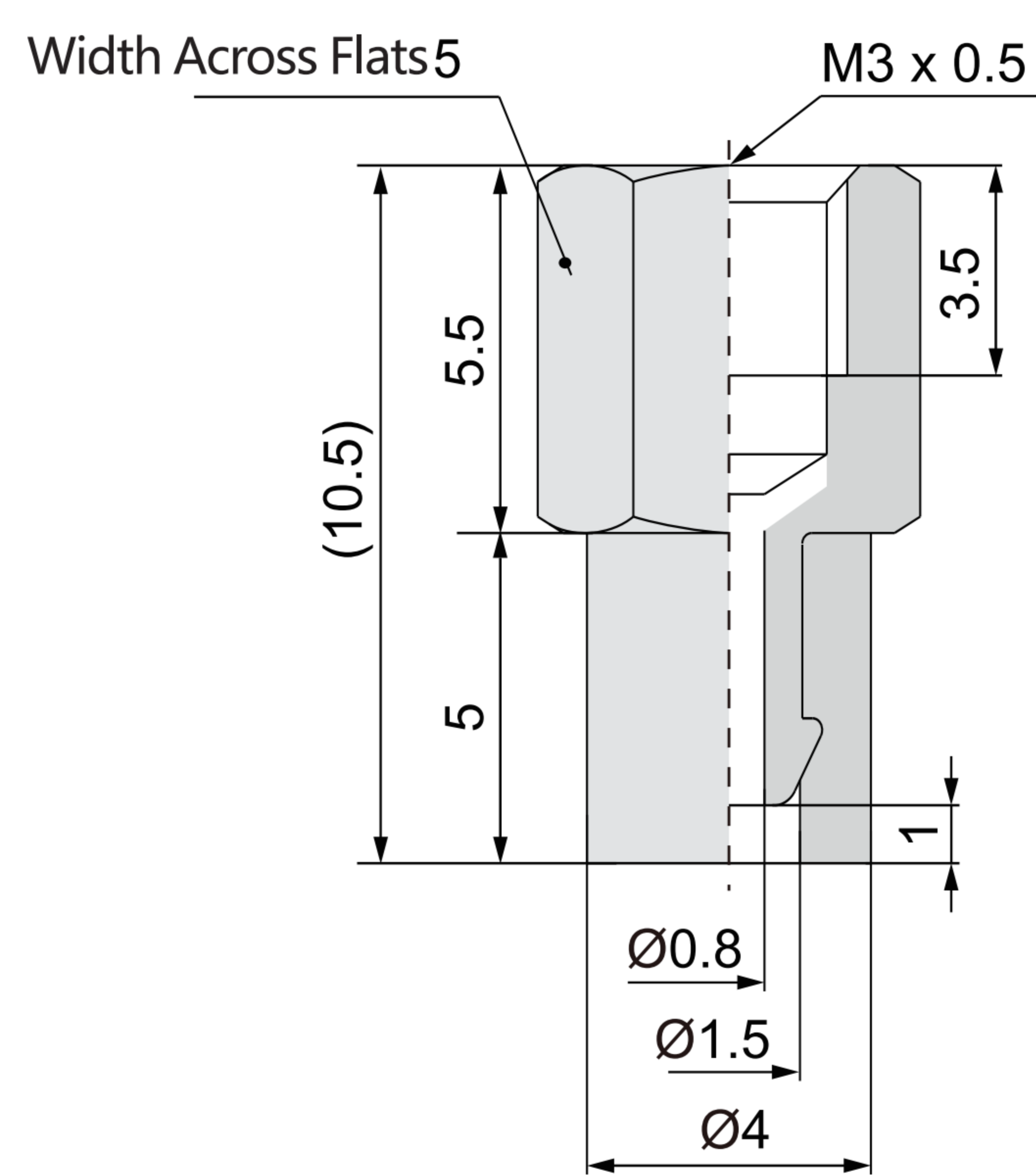
SZP2-T08S-A5



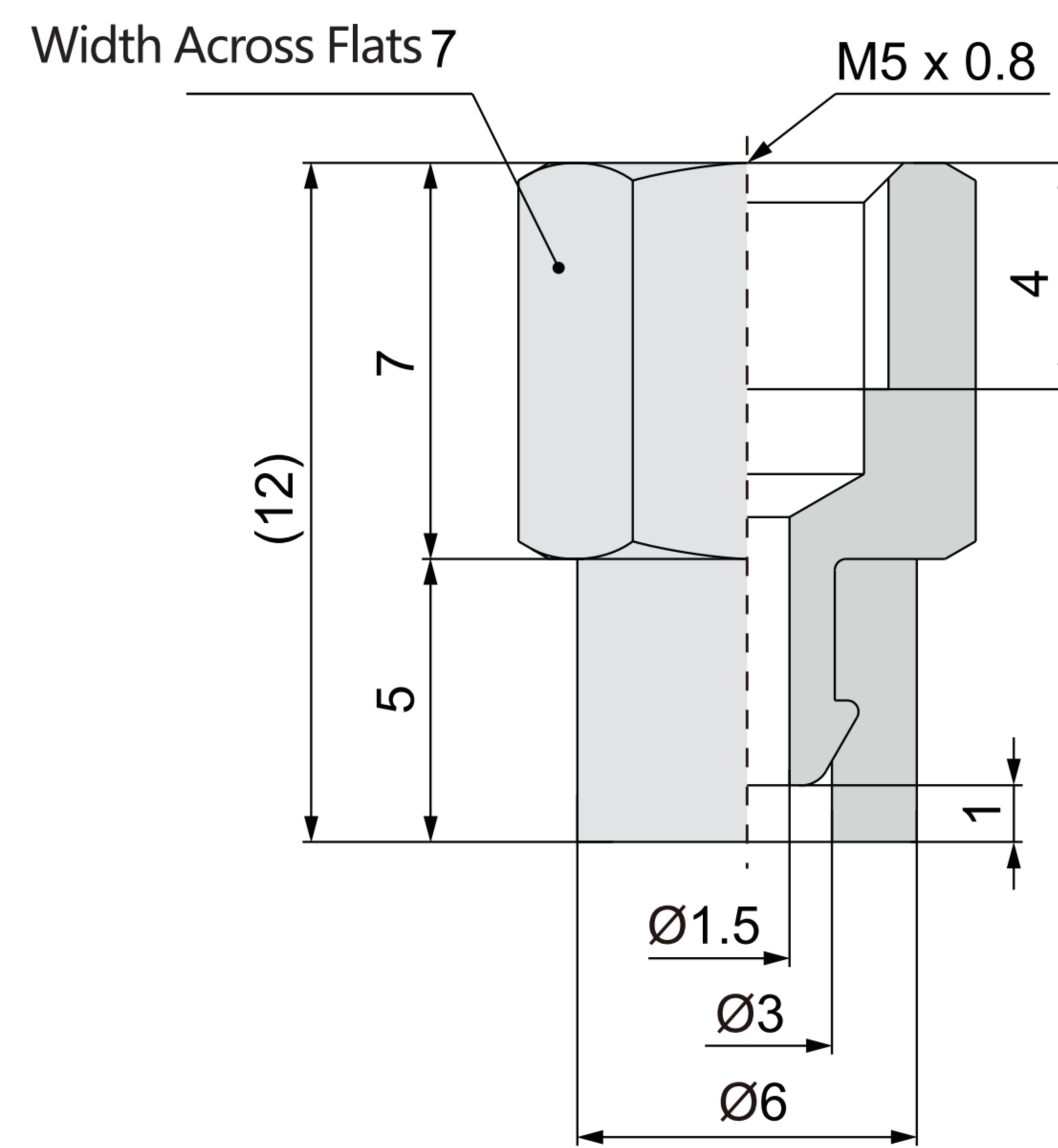
SZP2-T10S-A5



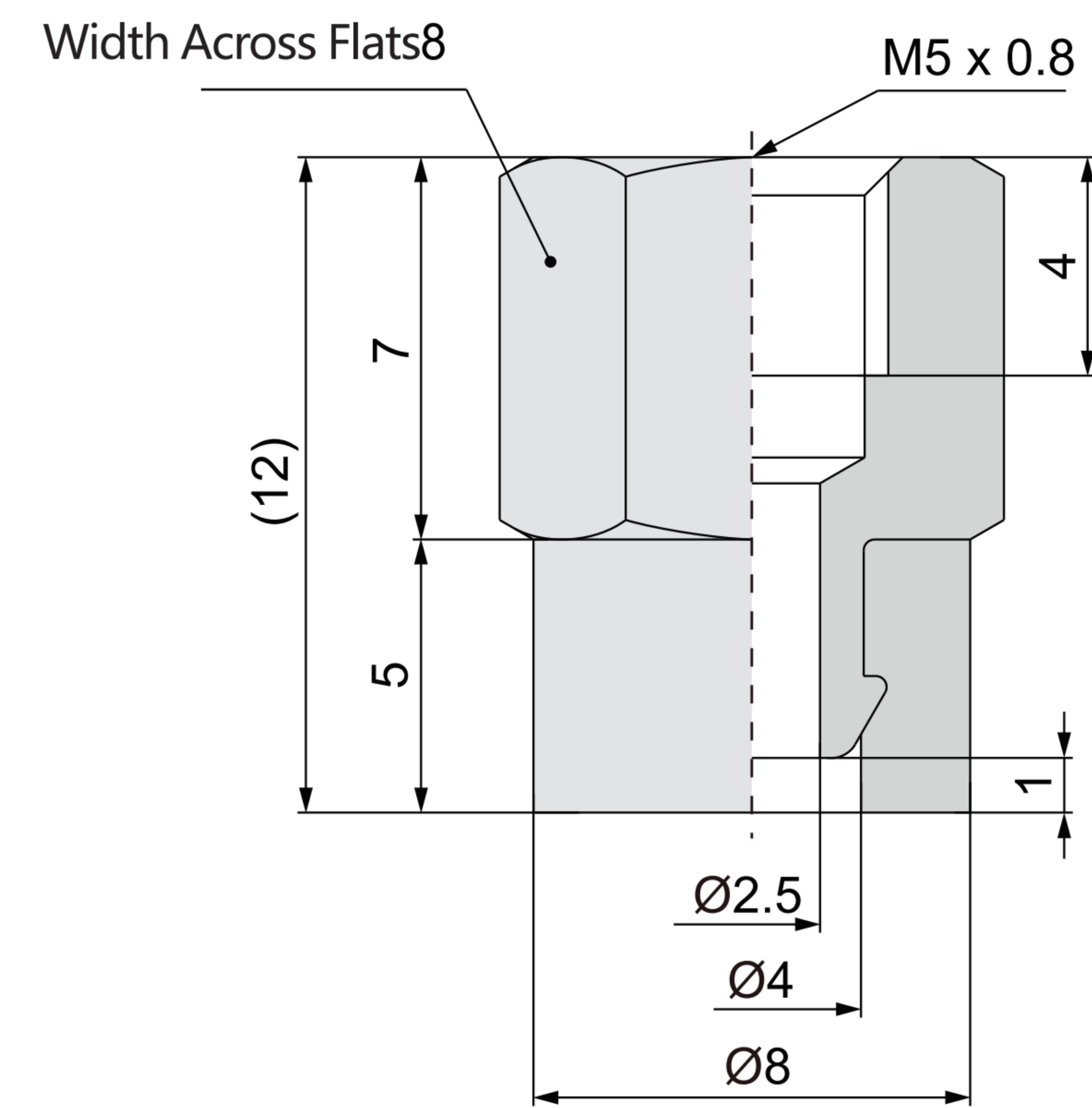
SZP2-T15S-A5



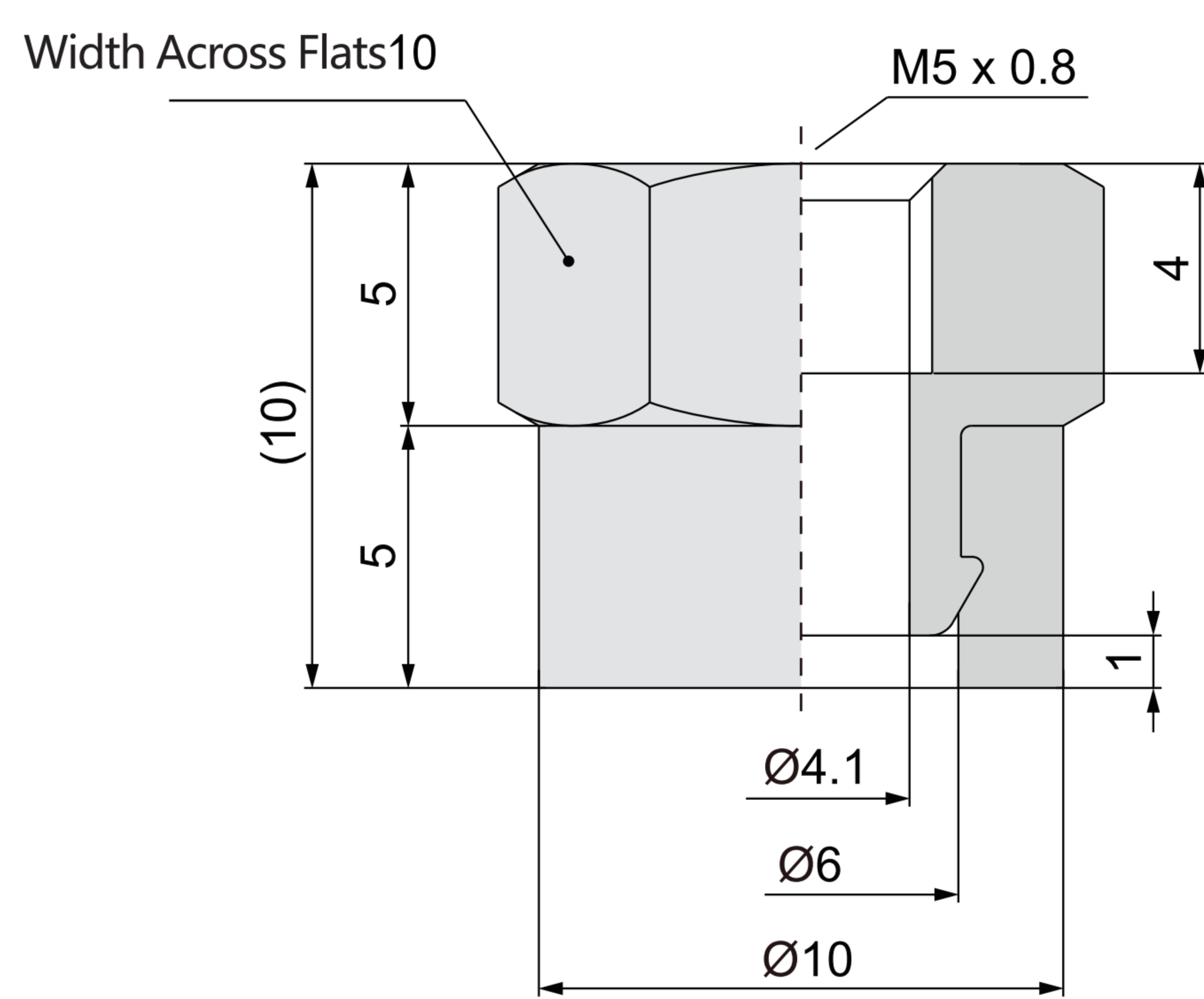
SZP2-T04S-B3



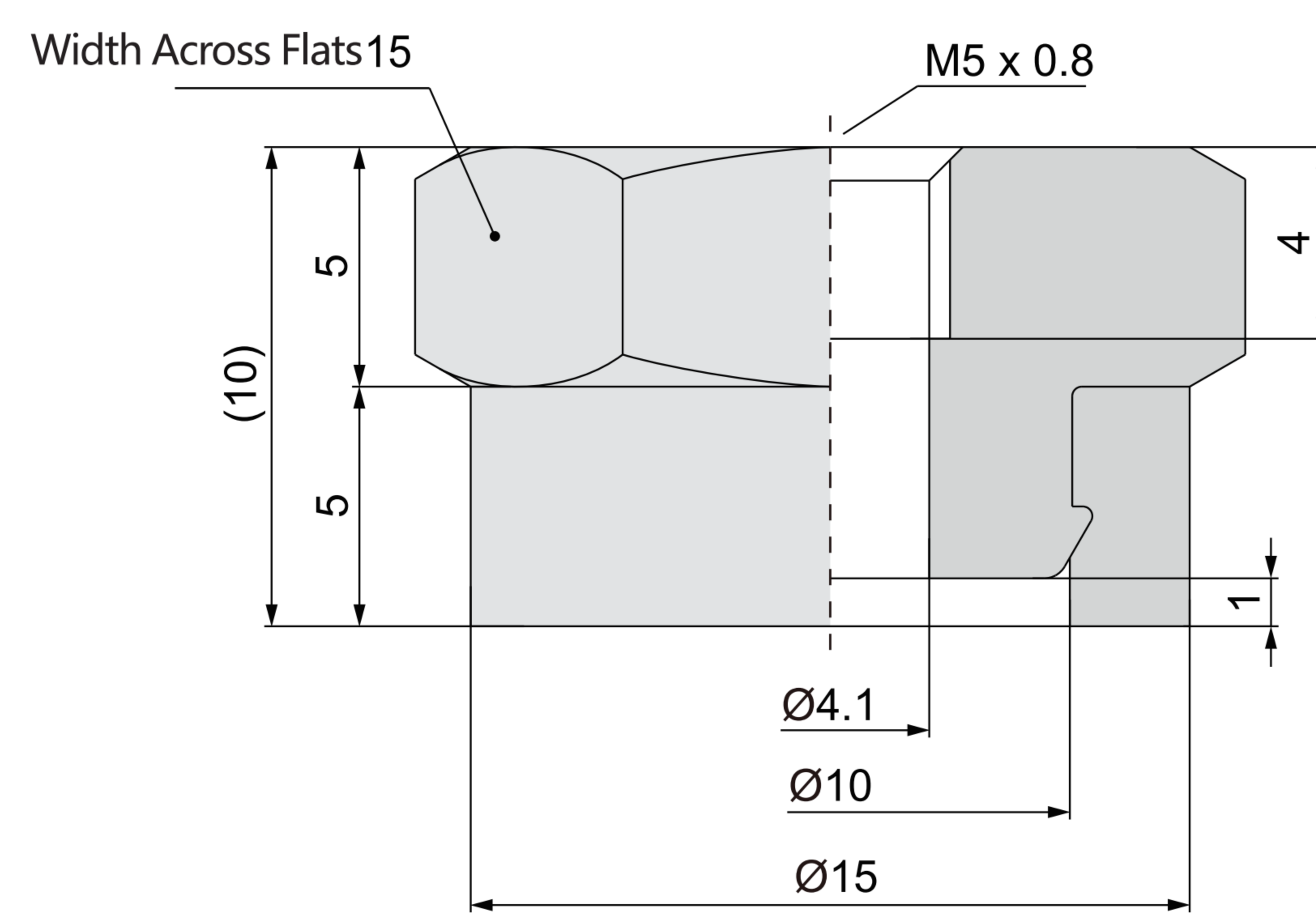
SZP2-T06S-B5



SZP2-T08S-B5



SZP2-T10S-B5



SZP2-T15S-B5