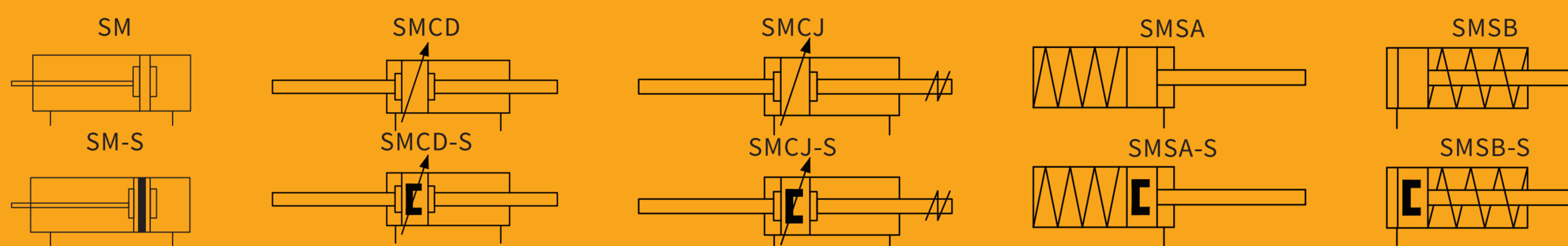


SM

Mini Type Cylinder



Specifications

Bore size(mm)	20	25	32	40
Acting type	Double Acting/Single Acting			
Working medium	Clean Air(40 μ m filtration)			
Working pressure (MPa)	0.1~1.0(Double Acting) / 0.2~1.0(Single Acting)			
Guaranteed pressure (MPa)	1.5			
Working temperature (°C)	-20~70(No freezing)			
Speed range (mm/s)	Double Acting: 30~800		Single Acting:50~800	
Cushion type	Rubber cushion / Air cushion			
Barrel material	Aluminum alloy			
Mounting type	LB FA SDB			
Port size	G1/8 ①			G1/4 ①

① PT、NPT port size is optional.

How to Order?

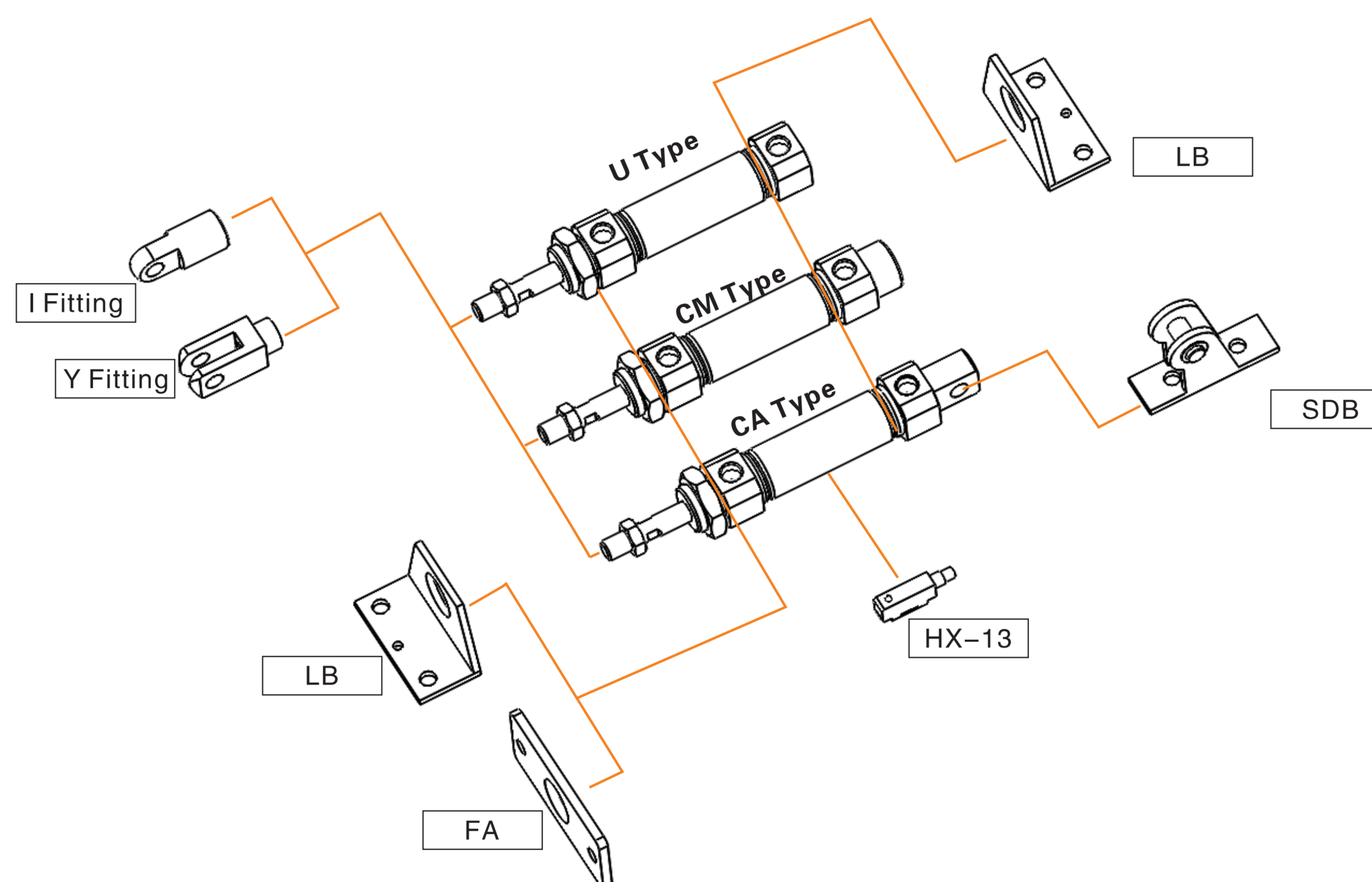
Series	Cushion Type	Type Code	Bore X Stroke	Adjustable Stroke	Magnet Code	Tail Type	Mounting Type	Thread Type
SM	C: Air cushion Blank: Rubber cushion	Blank: Basic type D: Double -shaft type J: Double -shaft,adjustable stroke type SA: Single acting spring extend SB: Single acting spring return	20 25 32 40	25 50 75 ...	10 20 30 40 50 75 100	Blank: No magnet S: With magnet	Blank:No bracket LB FA SDB IJ YJ	Blank: G P: PT T: NPT
						Blank: Swiveling tail U: Flat tail CM: Round tail		

Order Example:

SM series double shaft adjustable stroke cylinder, air cushion, bore 32mm, stroke 25mm, adjustable stroke 20mm. with magnet, no bracket, round tail, PT thread. The ERP code is: SMCJ32x25-20-S-CM-P

Note: There are many mounting types, you can chose LB/FA/SDB/IJ/YJ
LB and Rear FA are not available for Swiveling tail.

Optional Accessories



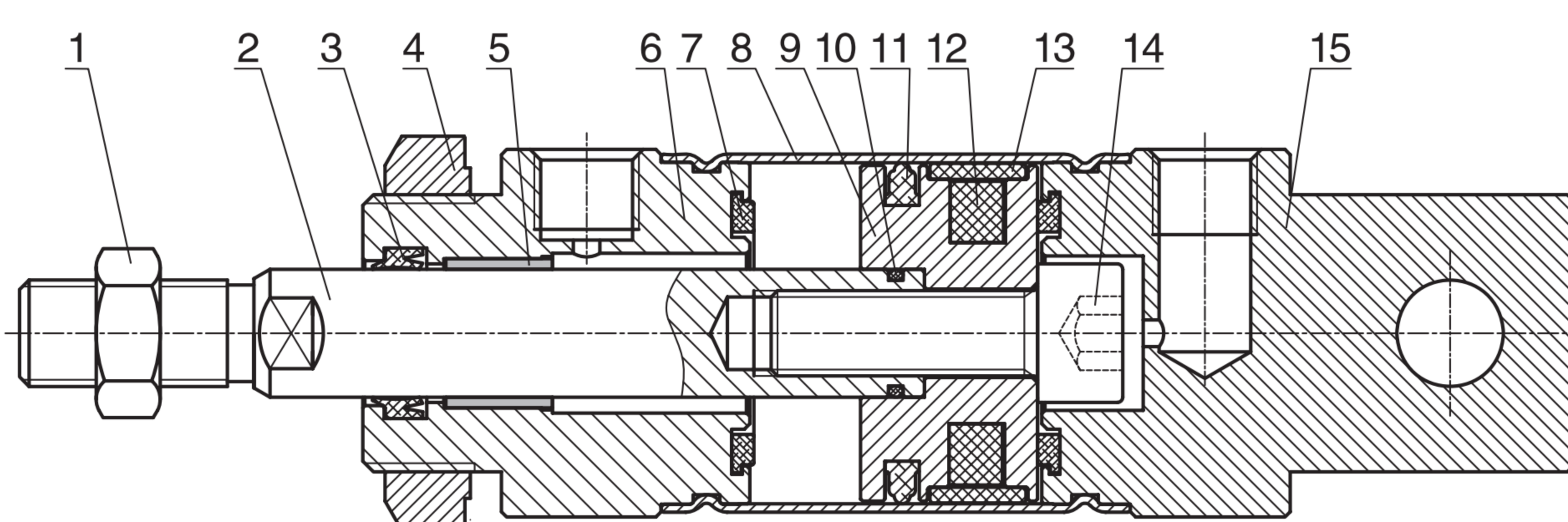
SM Series Stainless Steel Mini Cylinder



Stroke

Bore (mm)		Standard Stroke (mm)	Max. Stroke (mm)
Double Acting	20	10 15 20 25 30 40 50 60 75 80 100 125 150 160 175 200 250 300 400 500	600
	25~40	10 15 20 25 30 40 50 60 75 80 100 125 150 160 175 200 250 300 400 500 600	800
Single Acting	20	10 15 20 25 30 40 50 60 75 80 100 125 150	150
	25~40	10 15 20 25 30 40 50 60 75 80 100 125 150	150

Internal Structure

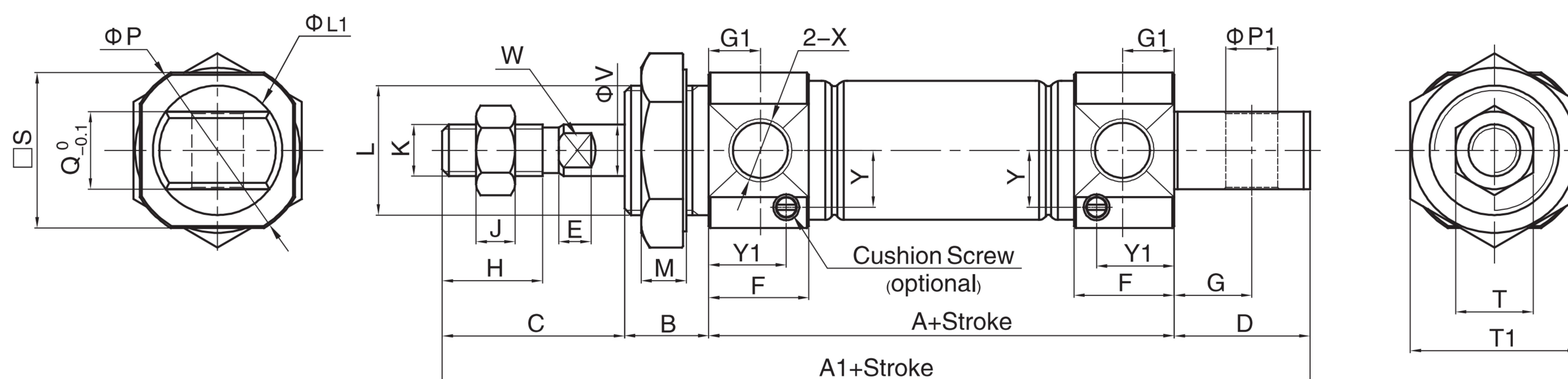


No.	Part Name	Material
1	Nut	Carbon Steel
2	Piston rod	S45C hard chrome carbon steel
3	Piston rod seal	NBR
4	Nut	Carbon Steel
5	Self lubricating Bearing	Bronze Powder
6	Head cover	Aluminum Alloy
7	Anti-bump cushion	TPU
8	Barrel	Stainless steel
9	Piston	Aluminum Alloy
10	O-ring	NBR
11	Piston seal	NBR
12	Magnet	Plastic
13	Wear ring	PTFE
14	Hexagon screw	Carbon steel
15	Rear cover	Aluminum Alloy

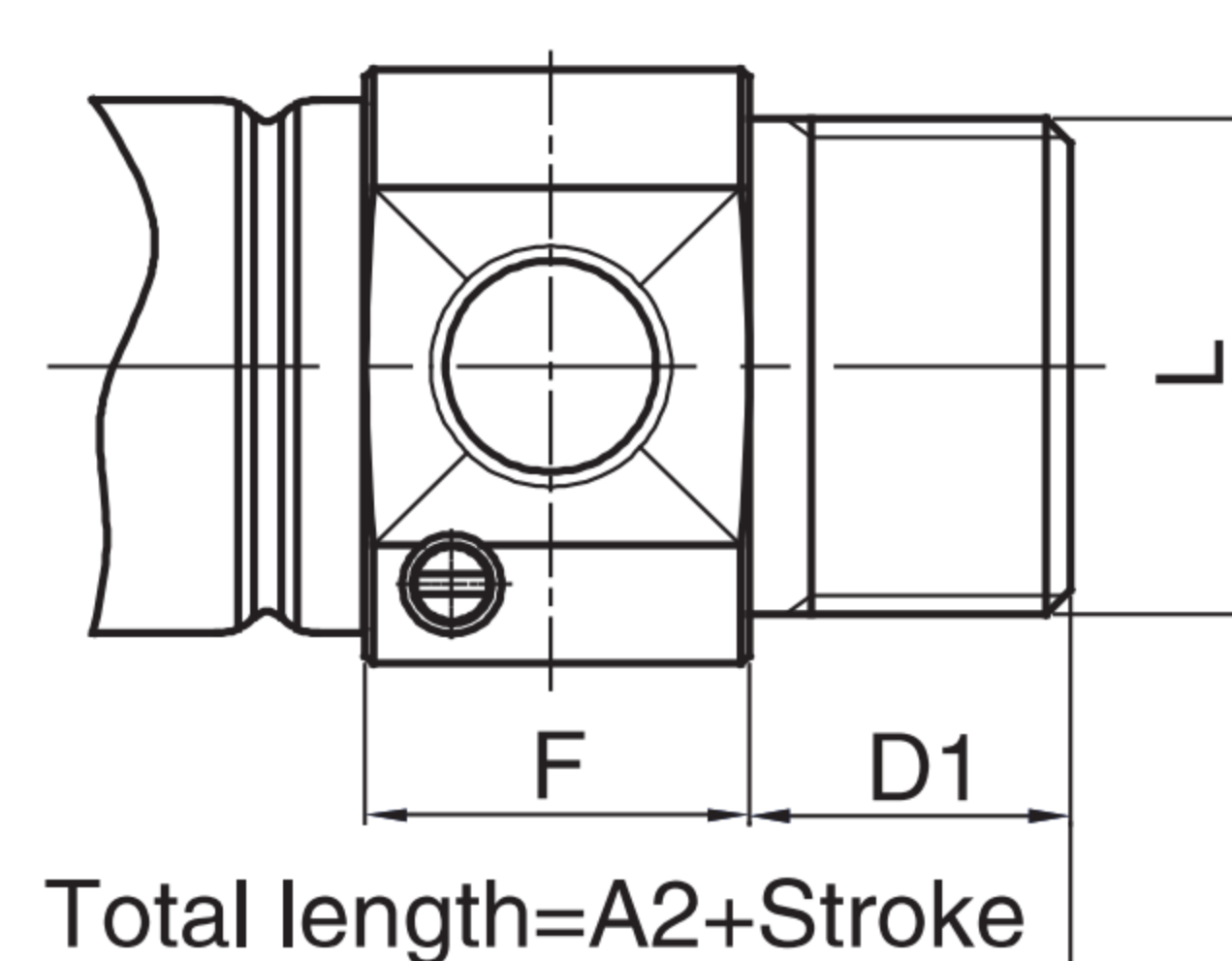
Main Dimension

SM $\Phi 20-\Phi 40$

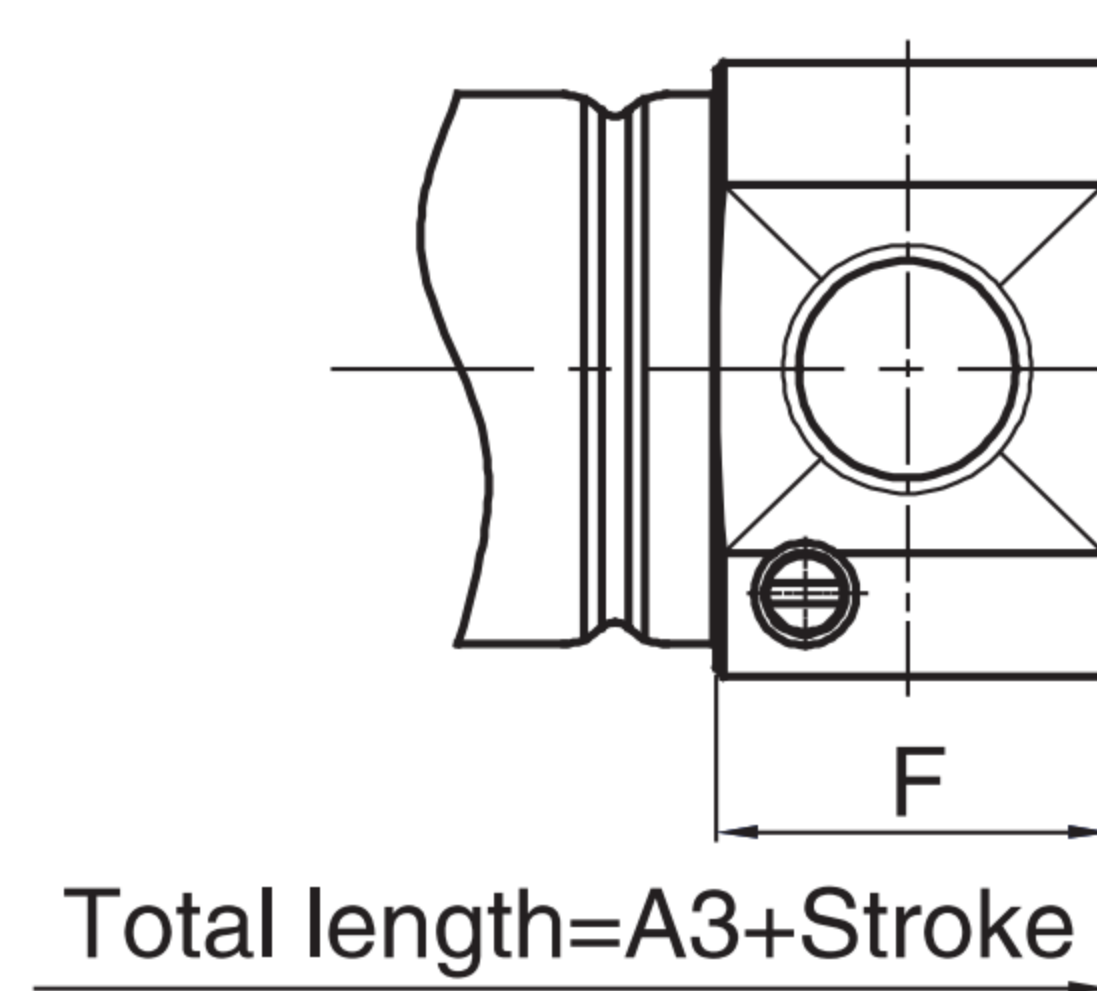
Swiveling tail (CA Type)



CM Type



U Type

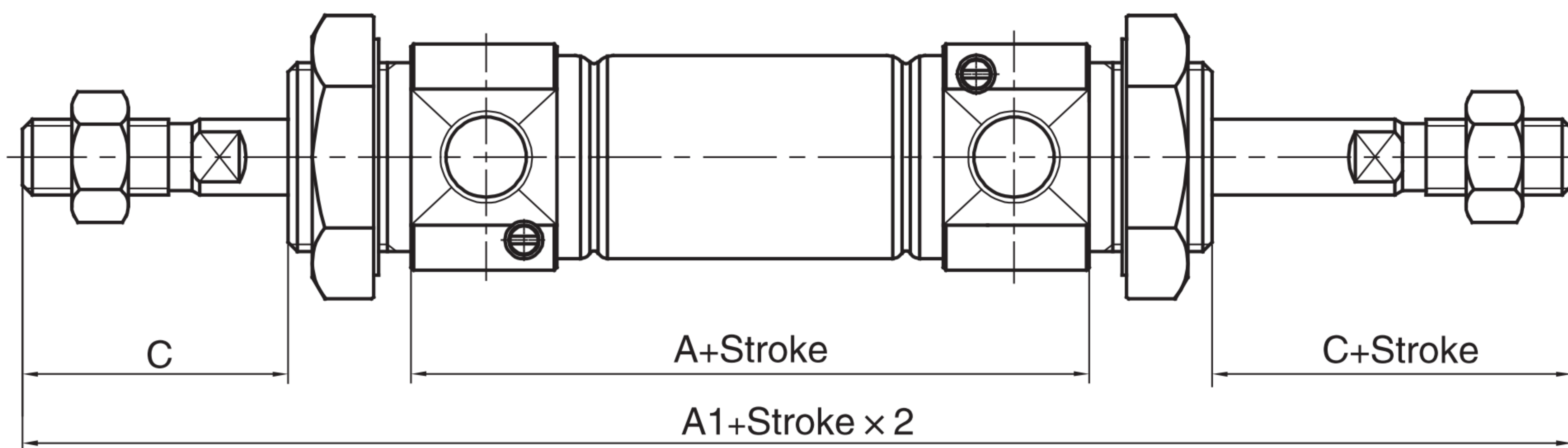


Bore\Sign	A	A1	A2	A3	B	C	D	D1	E	F	G	G1	H	J	K	L	L1	M	P	P1	Q	S	T	T1	X	V	W	Y	Y1
20	62	124	116	103	13	28	21	13	5	15.5	12	8	15.5	6	M8X1.25	M20X1.5	20	7	29	8	12	25	12	26	1/8"	8	6	8.8	12
25	62	128	120	107	13	32	21	13	5.5	15	12	8	19.5	6	M10X1.25	M26X1.5	22	8	33.5	8	12	30	17	32	1/8"	10	8	10	11.5
32	64	136	122	109	13	32	27	13	5.5	15	15	8	19.5	6	M10X1.25	M26X1.5	26	8	37.5	10	20	34.5	17	32	1/8"	12	10	12	11
40	88	165	154	138	16	34	27	16	7	22	15	11	21	8	M14X1.5	M32X2.0	32	9	46.5	10	20	42.5	19	41	1/4"	16	14	16	18

Note: With magnet and without magnet, the dimensions are same.

◎ Main Dimension

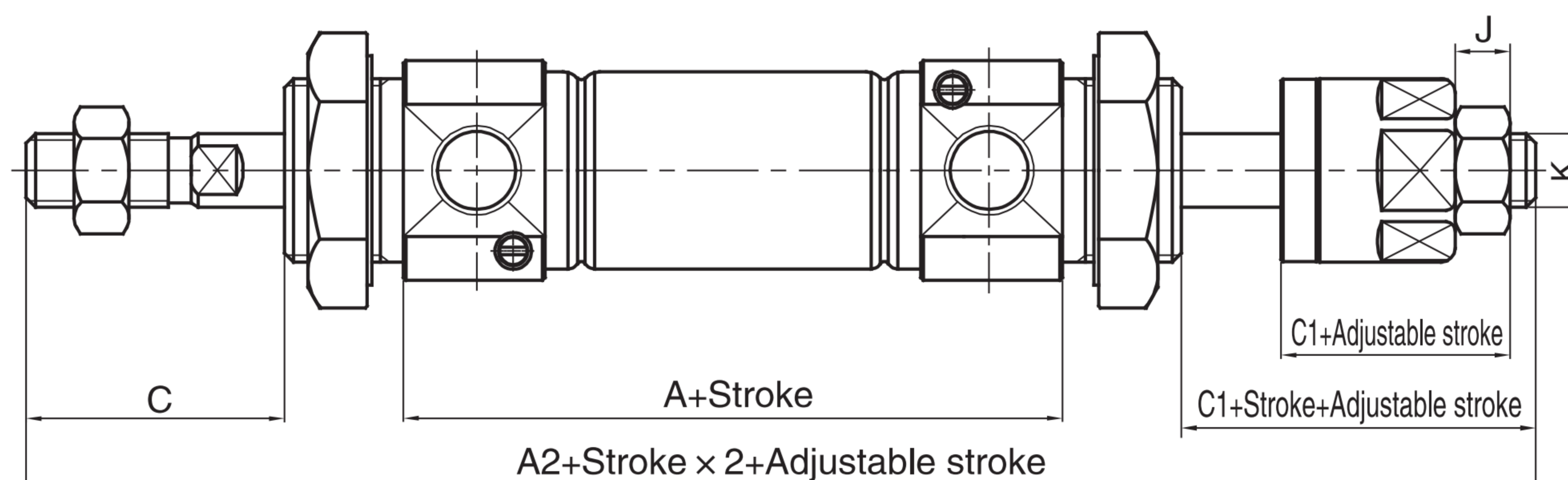
SMD $\Phi 20-\Phi 40$



Bore\Sign	A	A1	A2	C	C1	J	K
20	62	144	141	28	25	6	M8X1.25
25	62	152	147	32	27	6	M10X1.25
32	64	154	149	32	27	6	M10X1.25
40	88	188	182	34	28	7	M12X1.25

Note: Unlabeled the same size as standard type.

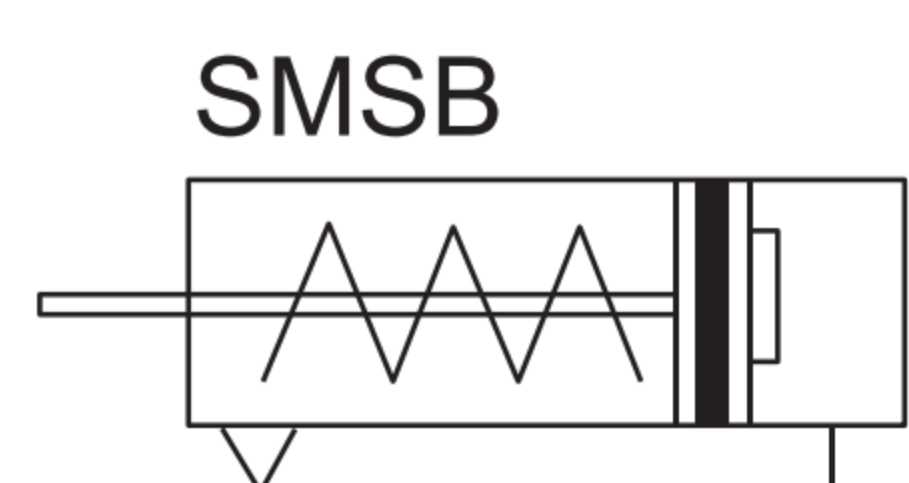
SMJ $\Phi 20-\Phi 40$



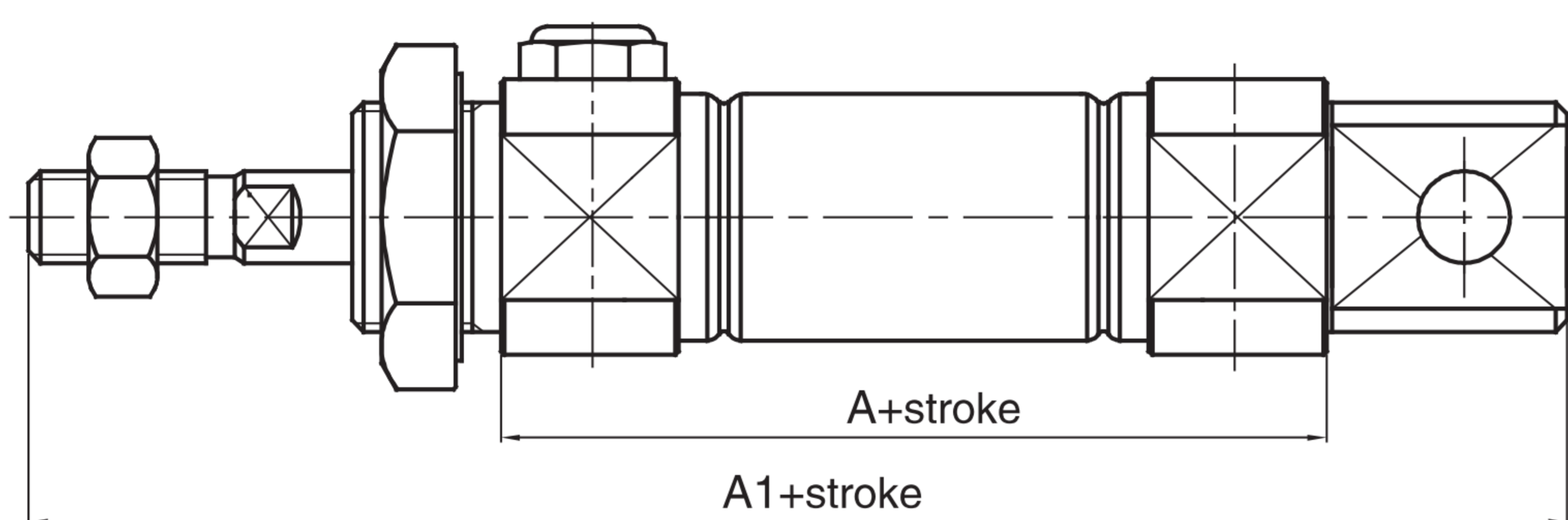
4

SM

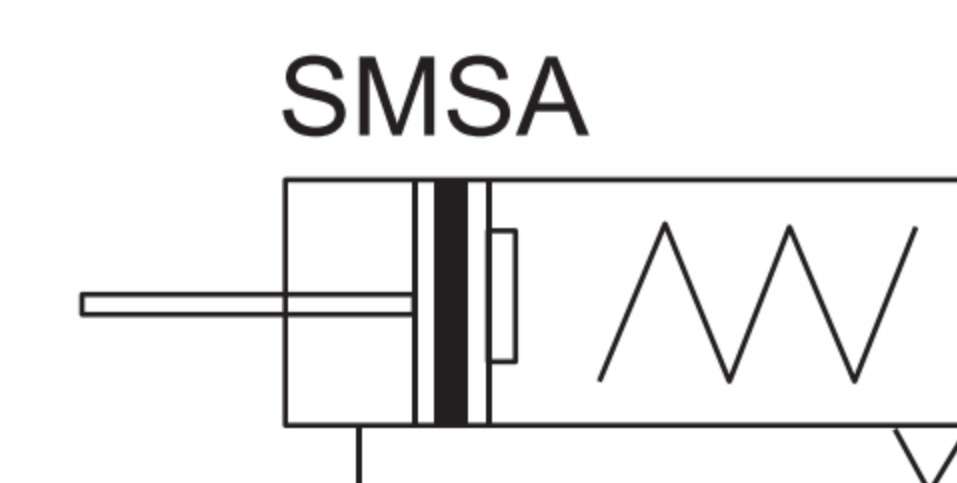
SMSB $\Phi 20-\Phi 40$



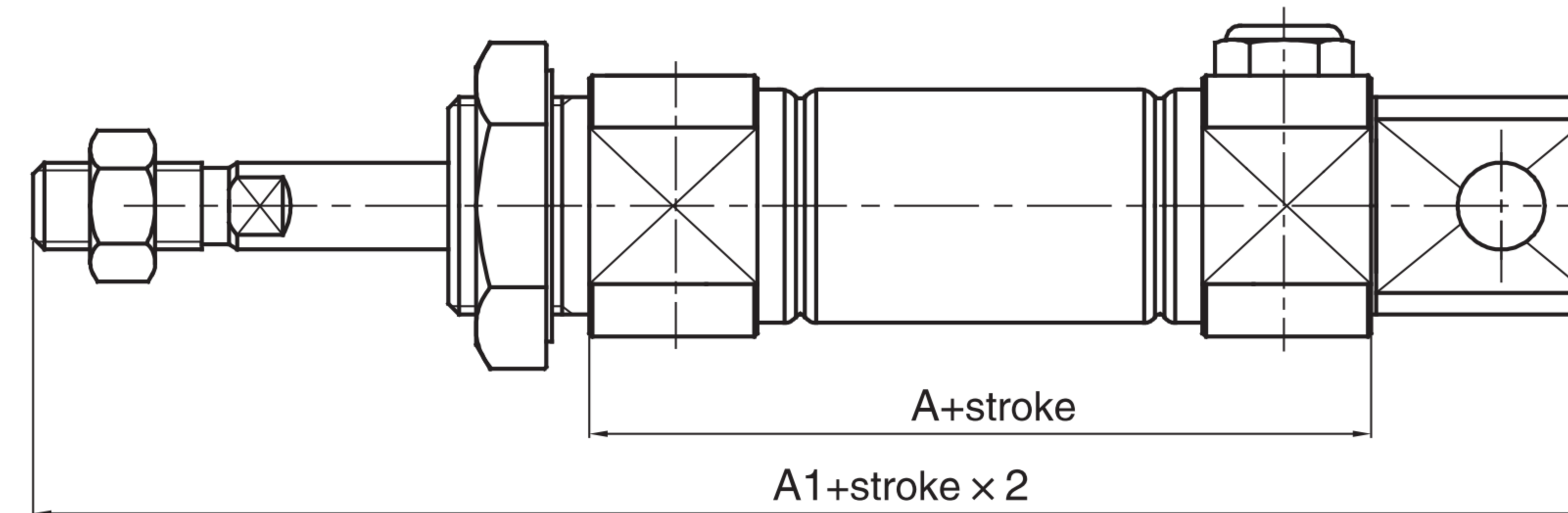
Swiveling tail (CA Type)



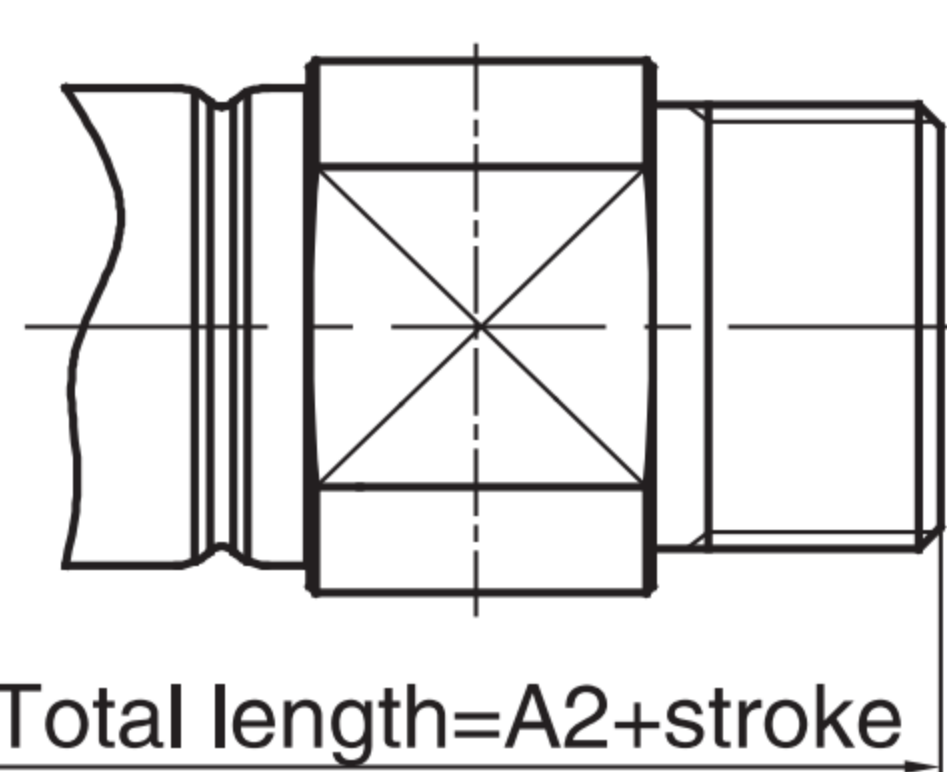
SMSA $\Phi 20-\Phi 40$



Swiveling tail (CA Type)

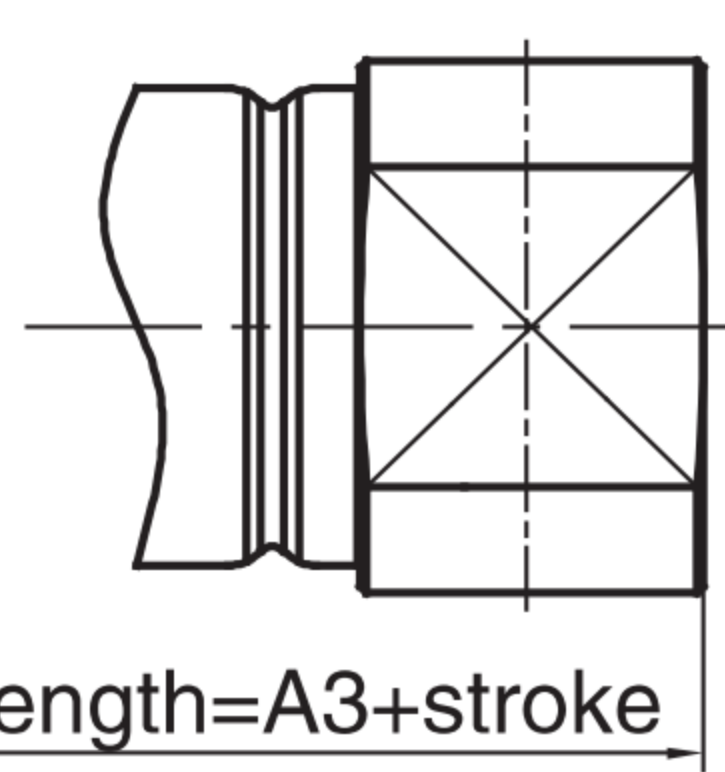


CM Type



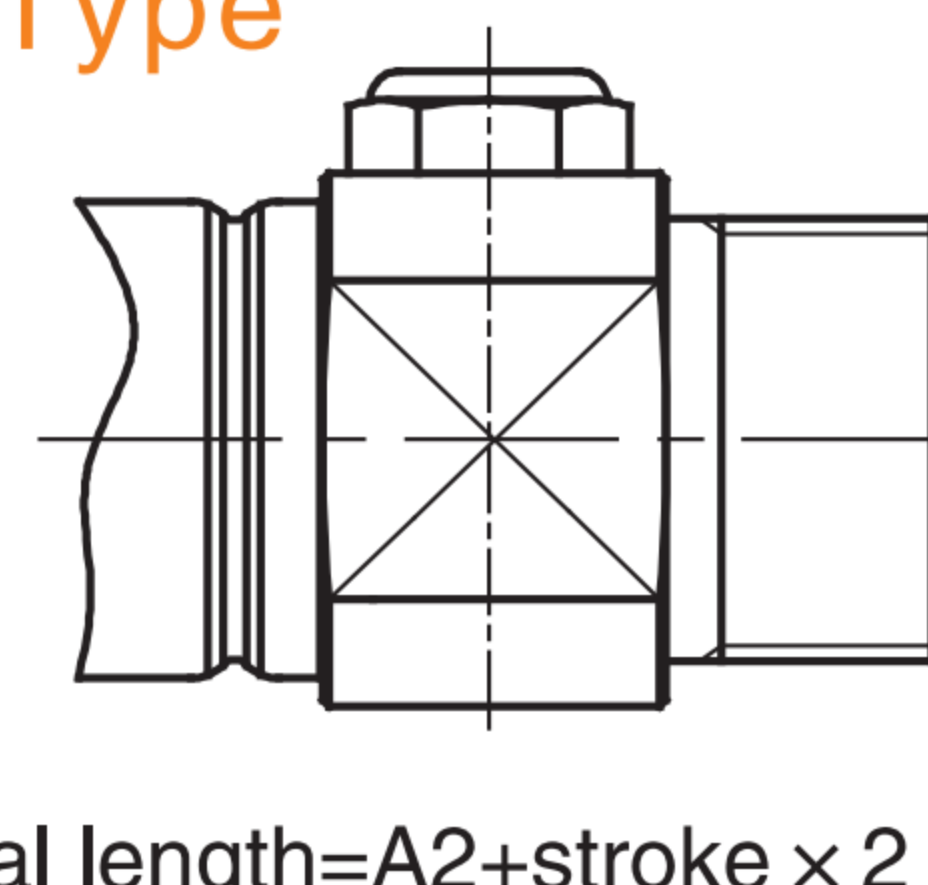
Total length=A2+stroke

U Type



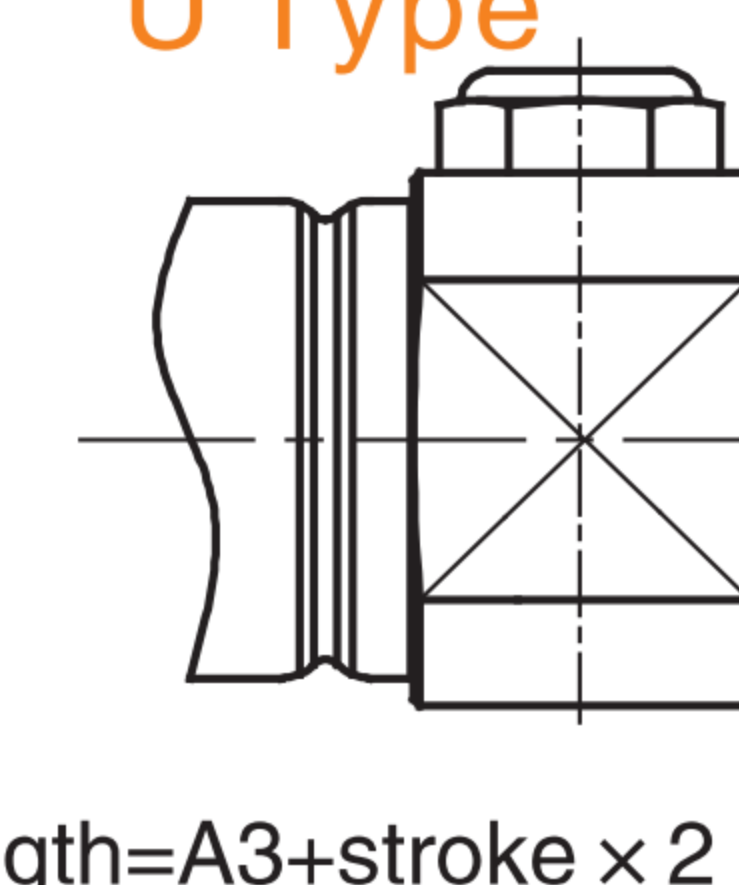
Total length=A3+stroke

CM Type



Total length=A2+stroke x 2

U Type



Total length=A3+stroke x 2

Bore\Sign	A			A1			A2			A3		
	0~50	51~100	101~150	0~50	51~100	101~150	0~50	51~100	101~150	0~50	51~100	101~150
20	87	112	137	149	174	199	141	166	191	128	153	178
25	87	112	137	153	178	203	145	170	195	132	157	182
32	89	114	139	161	186	211	147	172	197	134	159	184
40	113	138	163	190	215	240	179	204	229	163	188	213

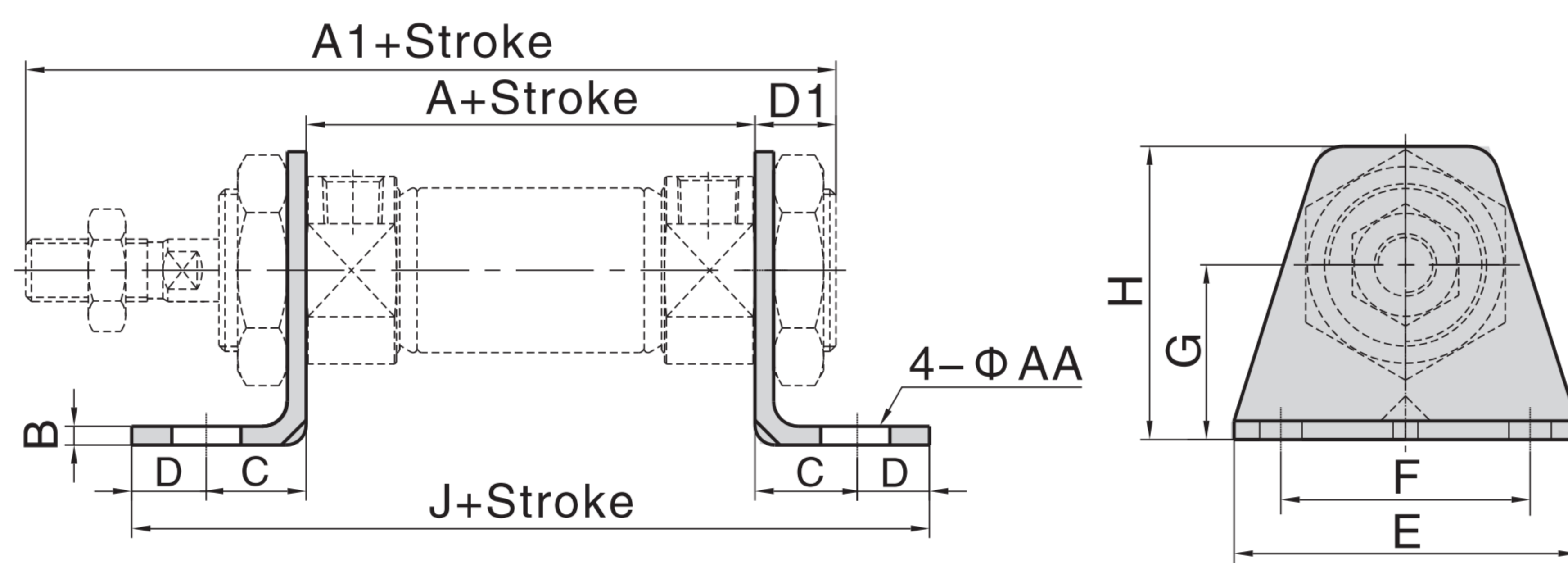
Note: Unlabeled the same size as standard type.

SM Series Stainless Steel Mini Cylinder



Accessory Dimensions

LB

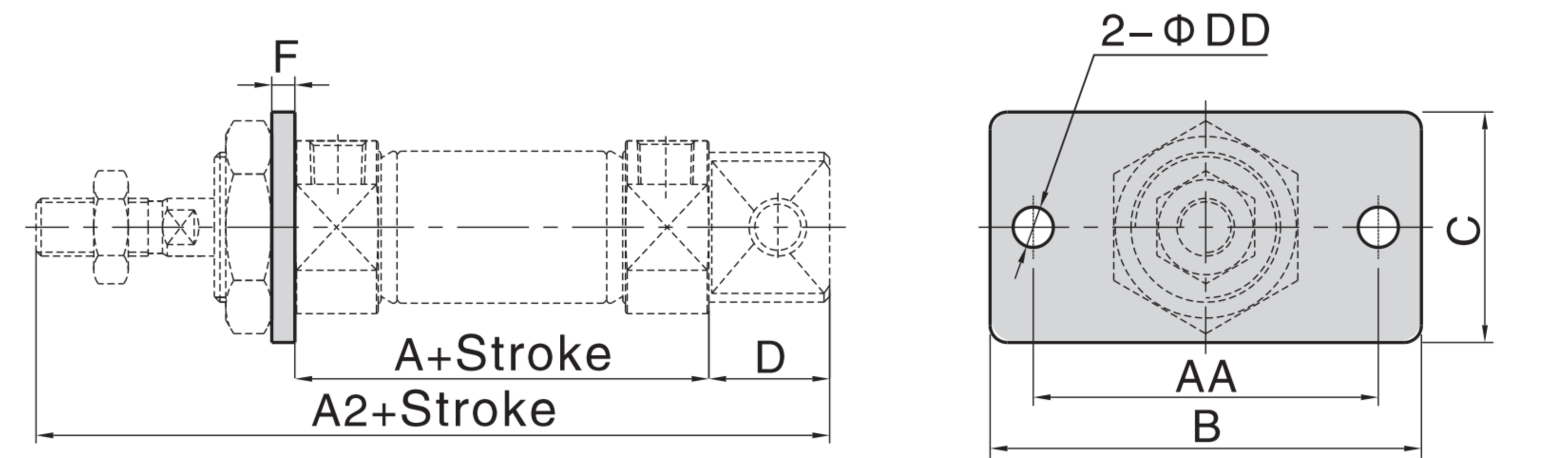


Bore\Sign	A	A1	AA	B	C	D	D1	E	F	G	H	J
FJ-SM20LB	62	116	7	3	20	8	13	55	40	25	40	118
FJ-SM25LB	62	120	7	3	20	8	13	55	40	28	47	118
FJ-SM40LB	88	154	7	3	23	10	16	75	55	30	54	154

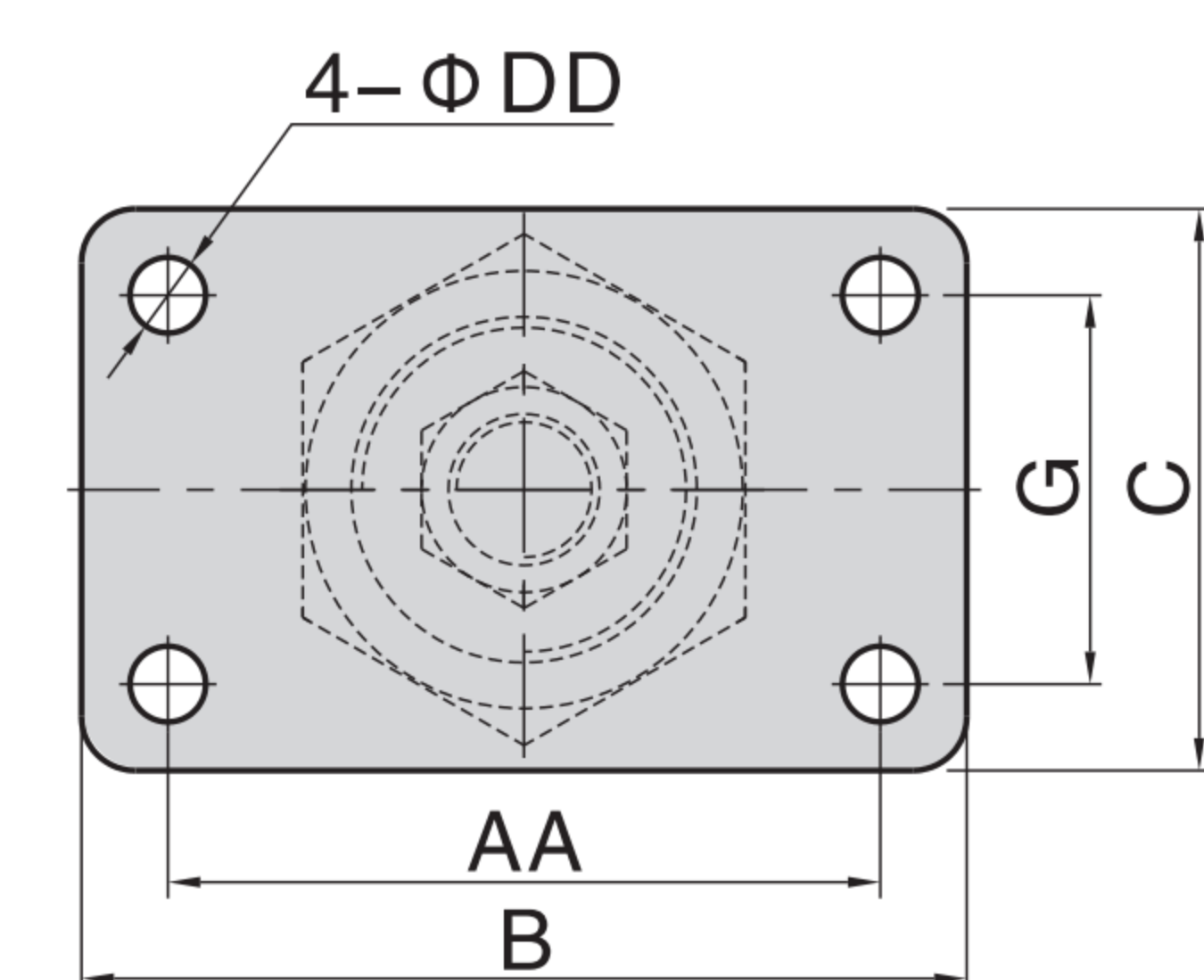
Note: $\Phi 32$ series borrowed $\Phi 25$ series

FA

$\Phi 20 - \Phi 32$



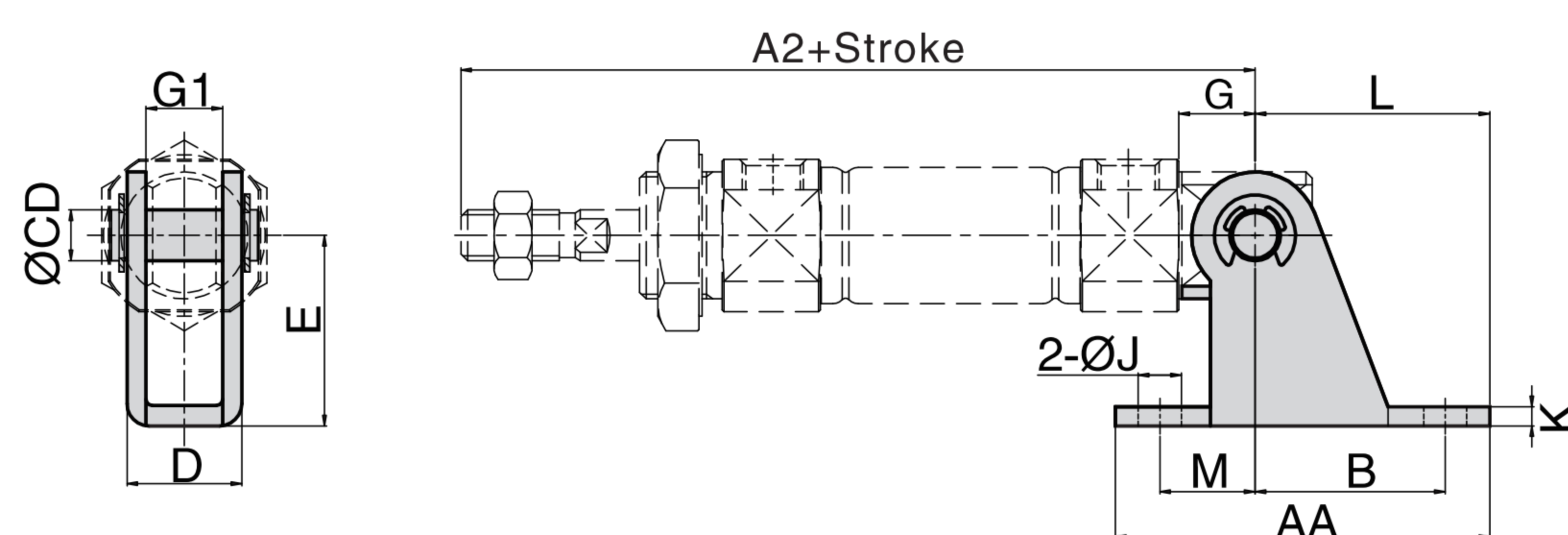
$\Phi 40$



Bore\Sign	A	A2	AA	B	C	D	DD	F	G
FJ-SM20FA	62	124	60	75	34	21	7	4	-
FJ-SM25FA	62	128	60	75	40	21	7	4	-
FJ-SM40FA	88	165	66	82	52	27	7	5	36

Note: $\Phi 32$ series borrowed $\Phi 25$ series

SDB



Bore\Sign	A2	AA	B	D	E	G	G1	CD	K	J	L	M
FJ-SM20SDB	115	59	30	18.1	30	12	12.1	8	3	6.8	37	15
FJ-SM32SDB	124	75	40	28.1	40	15	20.1	10	4	9	50	15

Note: $\Phi 25$ series borrowed $\Phi 20$ series
 $\Phi 40$ series borrowed $\Phi 32$ series