

## ERM

### Mini Regulator



#### Product Features

- Unique structural design, good pressure characteristics, large flow
- Variety of piping options are available
- Two ports position (  $\varnothing 4$ ,  $\varnothing 6$  ) are available
- Multiple installation methods

#### How to Order ?

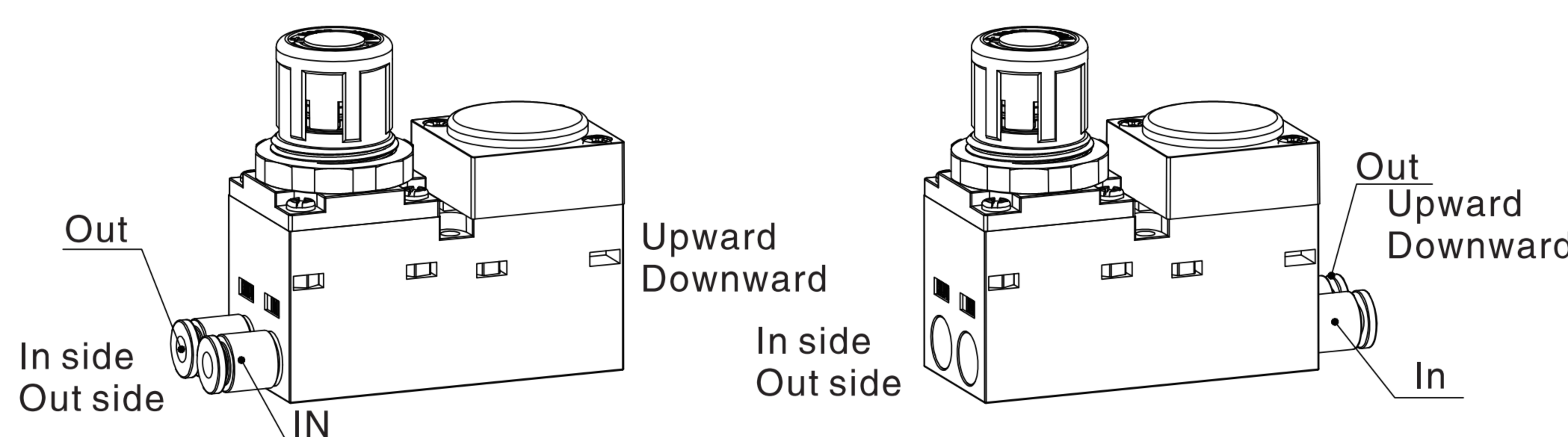
Series NO.	Piping Position	Port Size	Bracket Code	Scale Unit
ERM1000F: ERM series mini pressure regulator single front handwheel type	1. Downward Downward 2. Upward Upward 3. Downward Upward 4. Upward Downward	0404 0606 0604	J: No bracket	1:Mpa 2:Bar 3:Psi

**Order Example:** ERM series mini pressure regulator single front handwheel type, piping position in downward, out downward, port size in out  $\varnothing 4 \sim \varnothing 4$ , no bracket, scale unit Mpa, the ERP code is : ERM1000F-1-0404-J-1

#### Piping Position

Position Mark	In		Out	
	Downward	Upward	Downward	Upward
1	●		●	
2		●		●
3	●			●
4		●		●

#### Piping Direction Diagram

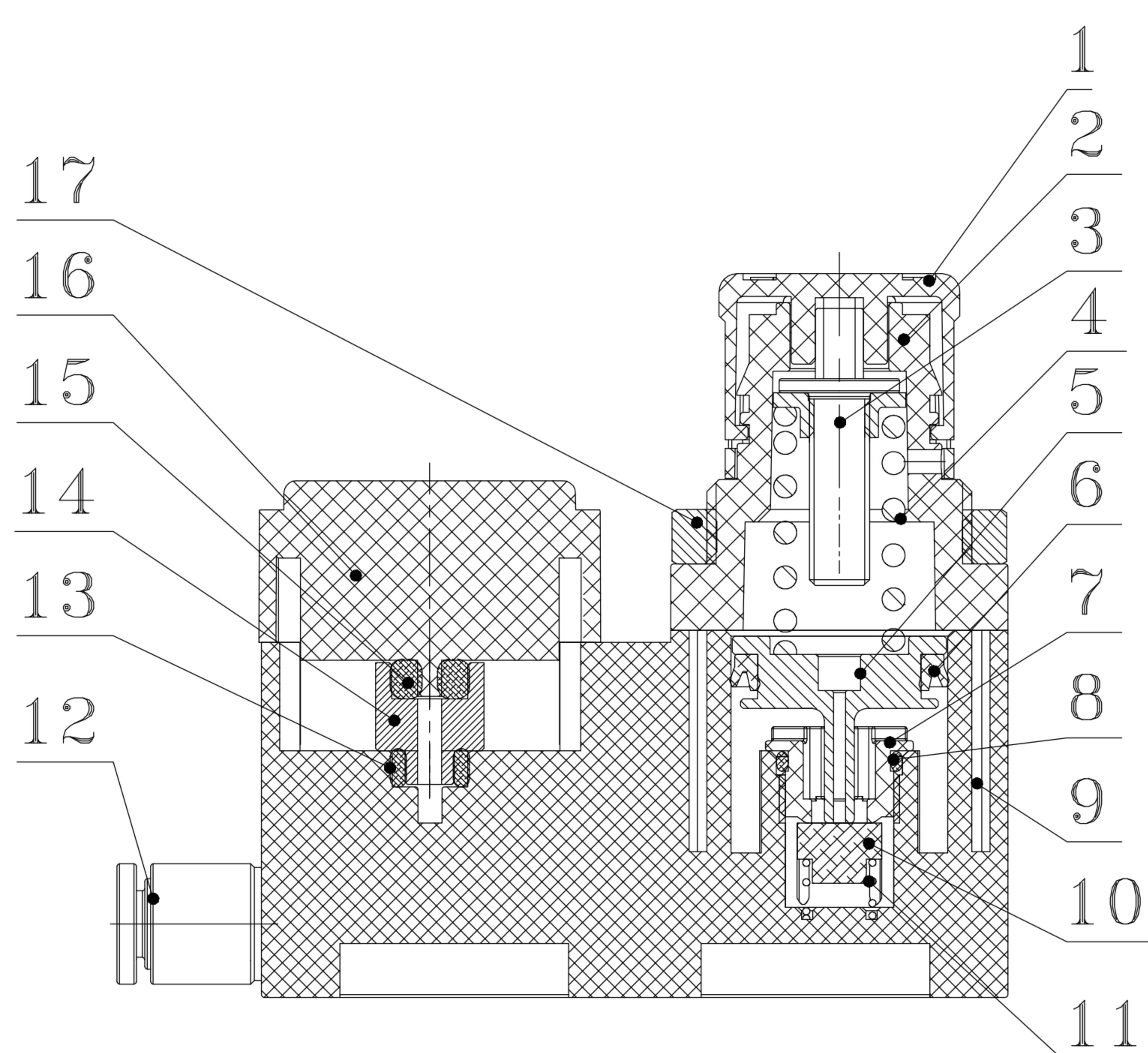


#### Piping Joint

Portsize Mark	In		Out	
	4	6	4	6
0404	●		●	
0606		●		●
0604		●	●	

All joint are straight joint

#### Internal Structure

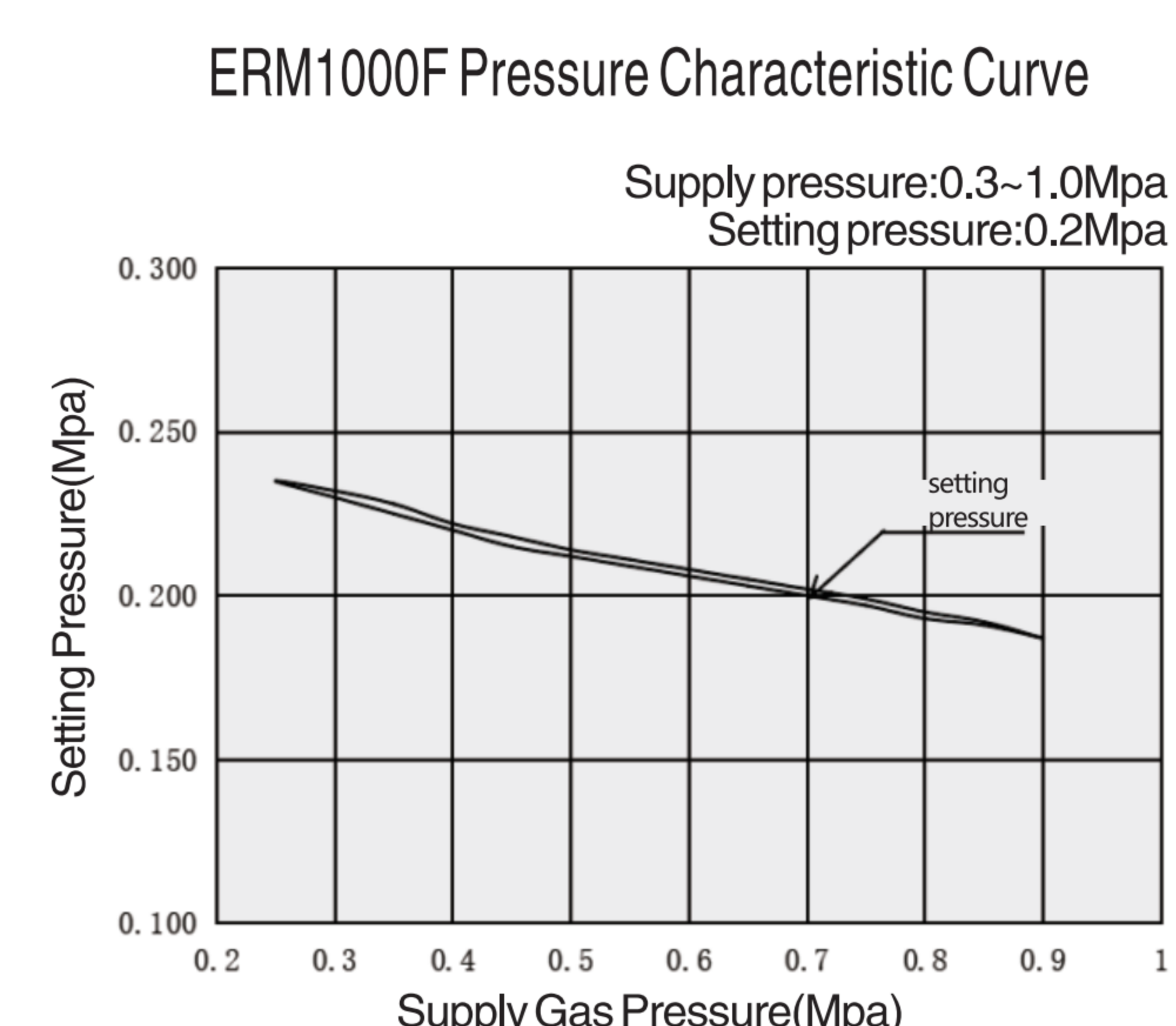


NO.	Part Name	Material	NO.	Part Name	Material
1	Regulating Handle	Plastics	10	Packing Washer	Rubber
2	Valve Cover	Plastics	11	Spring	Stainless Steel
3	Pressure Regulating Screw	Free-Cutting Steel	12	Joint	Stainless Steel + Plastic
4	Spring	SWC	13	Seal	Rubber
5	Piston	Aluminum alloy	14	Vent Pipe	Aluminum alloy
6	Y sealing Ring	Rubber	15	Seal	Rubber
7	Valve Seat	Plastics	16	Pressure Gage	Plastics+Brass
8	O-Ring	Rubber	17	Octagonal Caps	Aluminum Alloy
9	Valve Body	Plastics			

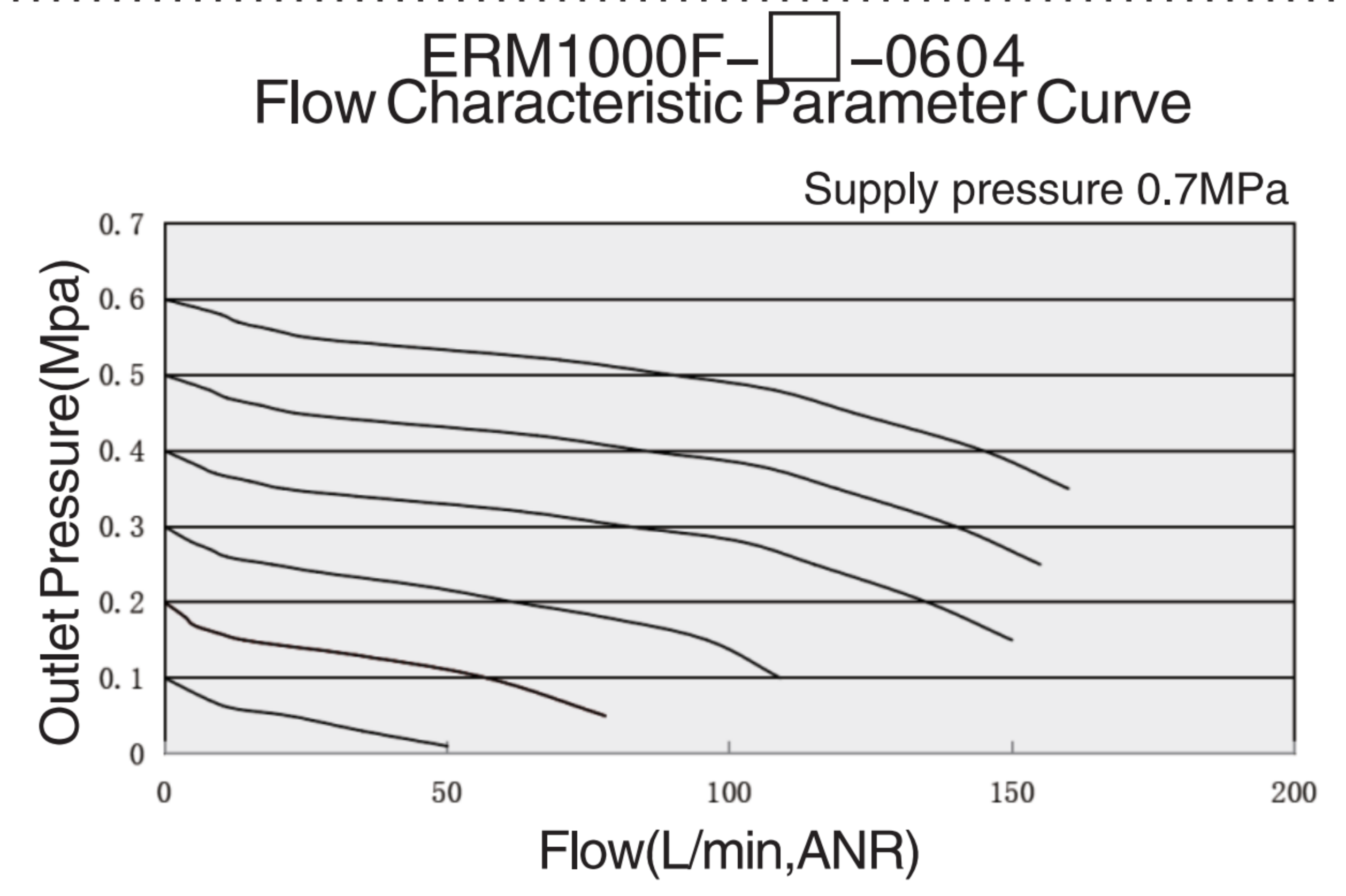
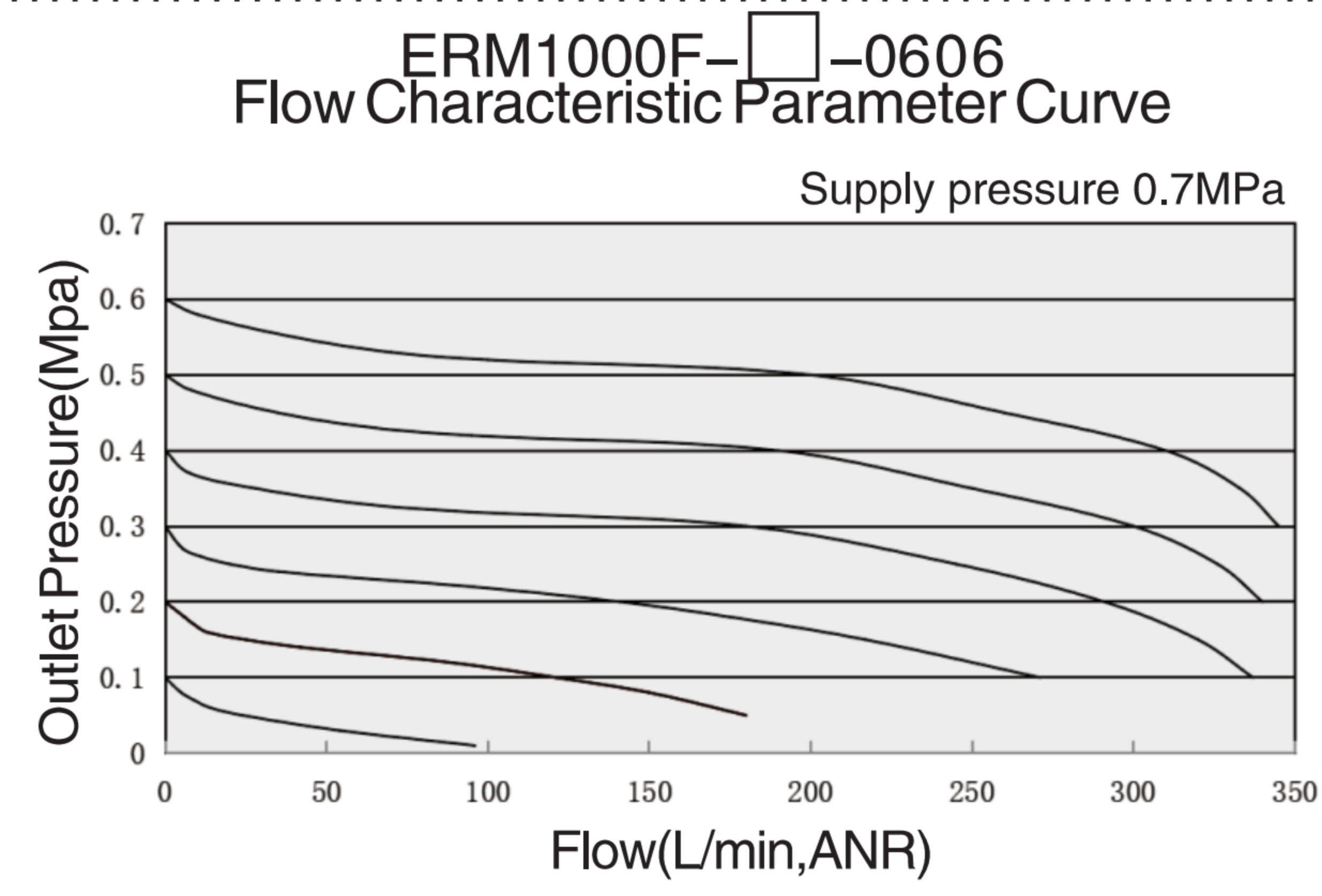
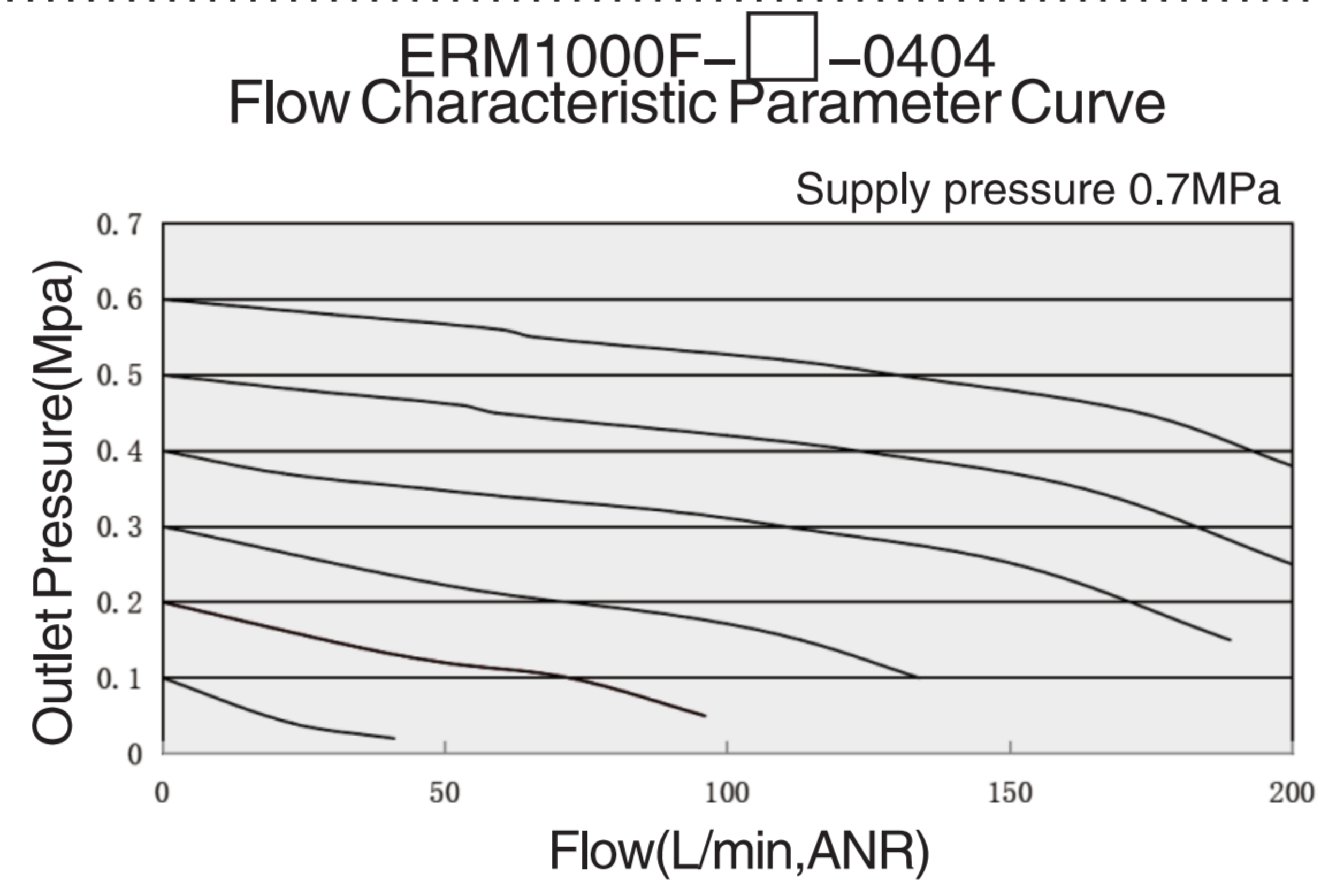
#### Specifications

Model	ERM1000F
Working Medium	Clean Air
Pressure Regulating Valve Structure	Directly Operated Type
Overflow Structure	Overflow Mode
In External Port	$\varnothing 4 \varnothing 6$
Out External Port	$\varnothing 4 \varnothing 6$
Proof Pressure ( Mpa )	1.5
Maximum Working Pressure	1.0
Output pressure range ( Mpa )	0.05 ~ 0.85
Working Temperature ( $^{\circ}\text{C}$ )	5 ~ 60
Weight ( g )	97

#### Pressure Characteristic Parameter Curve

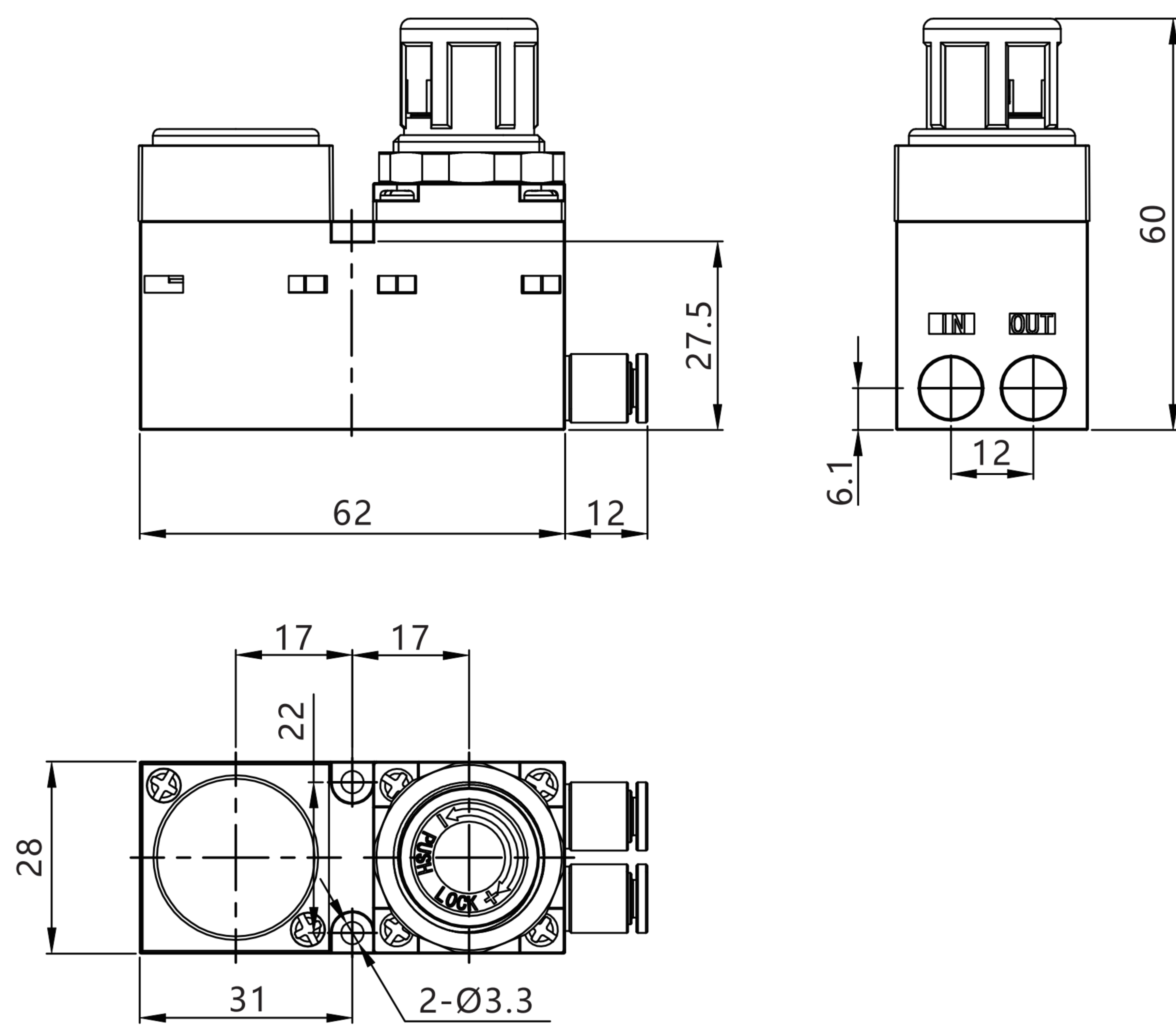


## Flow Characteristic Parameter Curve

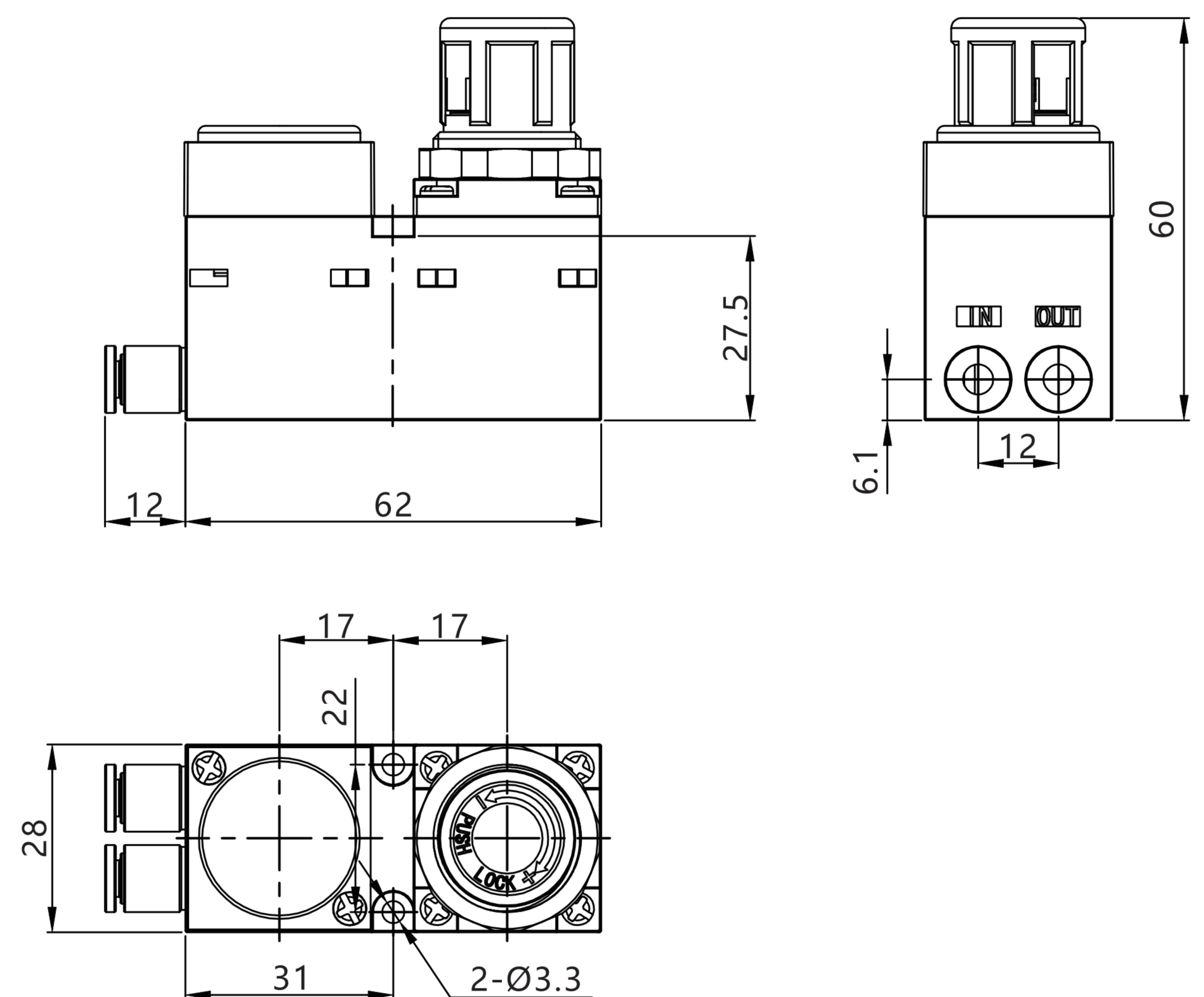


## ERM1000F Outline Dimensional Drawing

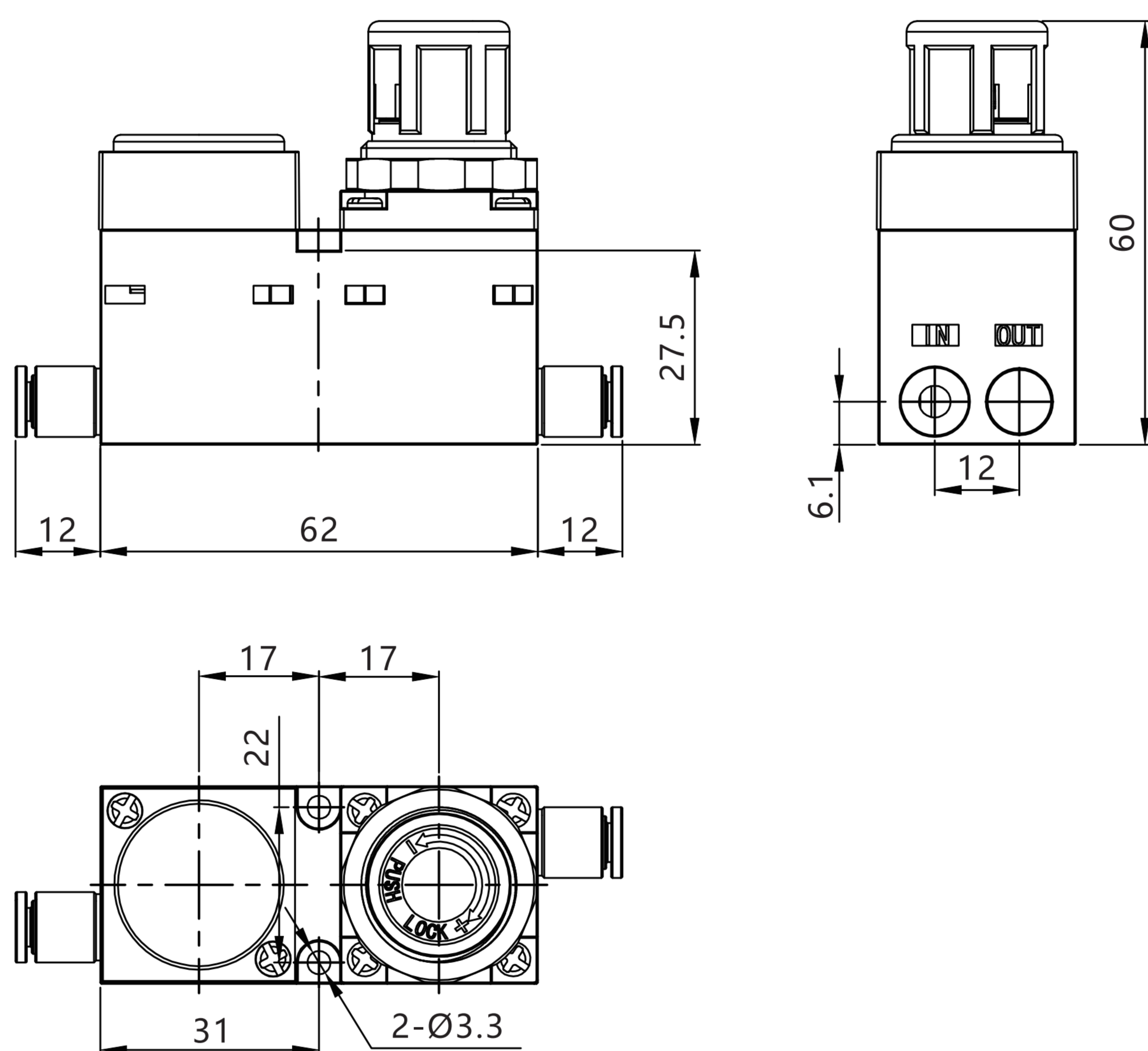
ERM1000F-1-□



ERM1000F-2-□



ERM1000F-3-□



ERM1000F-4-□

