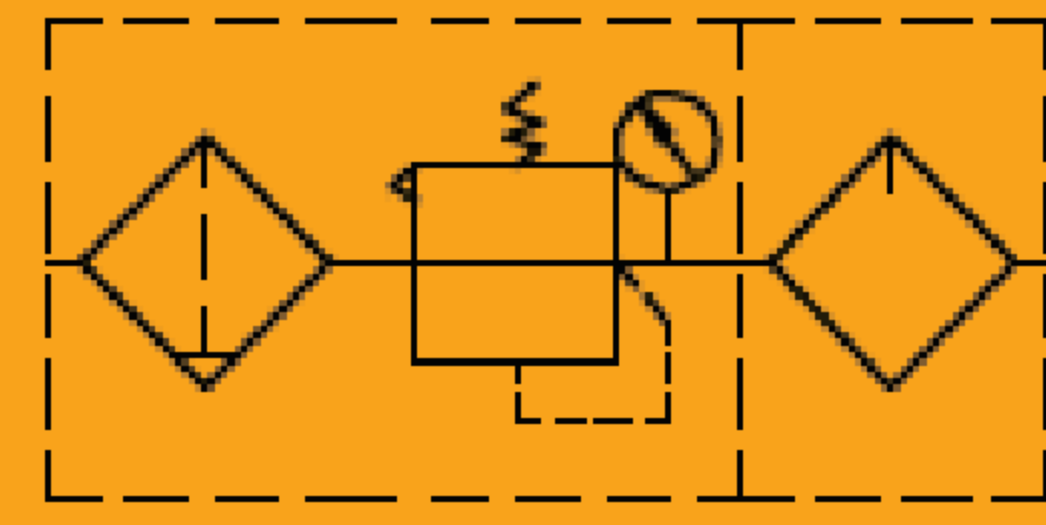


E Series Air Preparation Unit



EC
FR.L



Specifications

Model	EC1010	EC2010	EC3010	EC4010	EC5010
Proof pressure(MPa)	1.5				
Max. working pressure(MPa)	1.0				
Working temperature(°C)	-5~60 (No freezing)				
Filter precision	25µm (5 µm is optional)				
Recommended oil	Turbine No.1 Oil ISOVG32				
Bowl material	Polycarbonate				
Bowl guard	None	Available			
Pressure adjusting range(MPa)	0.15~0.85				
Valve type	With overflow				

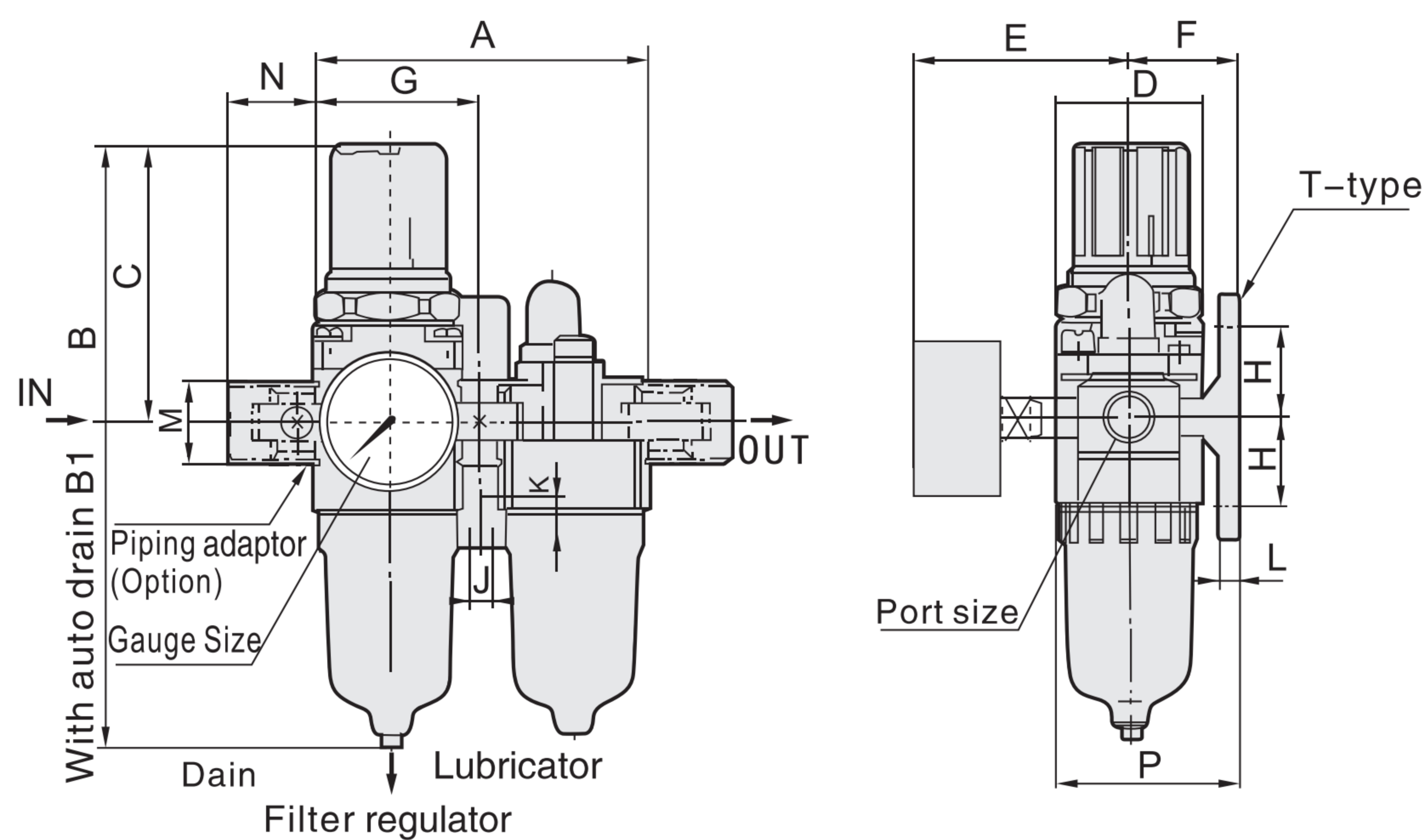
Model	Specifications						Accessories
	Assembly		* Rated flow (L/min)	** Port size (G)	Pressure gauge thread size (G)	Weight (kg)	Bracket
Filter with pressure	Lubricator						
EC1010-M5	EW1000	EL1000	90	M5	1/16	0.22	Y10T
EC2010-01	EW2000	EL2000	945	1/8	1/8	0.66	Y20T
EC2010-02			960	1/4			
EC3010-02	EW3000	EL3000	1874	1/4	1/8	0.98	Y30T
EC3010-03			1956	3/8			
EC4010-03	EW4000	EL4000	4923	3/8	1/4	1.93	Y40T
EC4010-04			5120	1/2			
EC4010-06	EW4000-06	EL4000-06	5000	3/4	1/4	1.99	Y50T
EC5010-06	EW5000	EL5000	6000	3/4	1/4	3.20	Y60T
EC5010-10			6200	1			

* The above information is based on 8.0 Bar supply pressure and 6.3 Bar set pressure

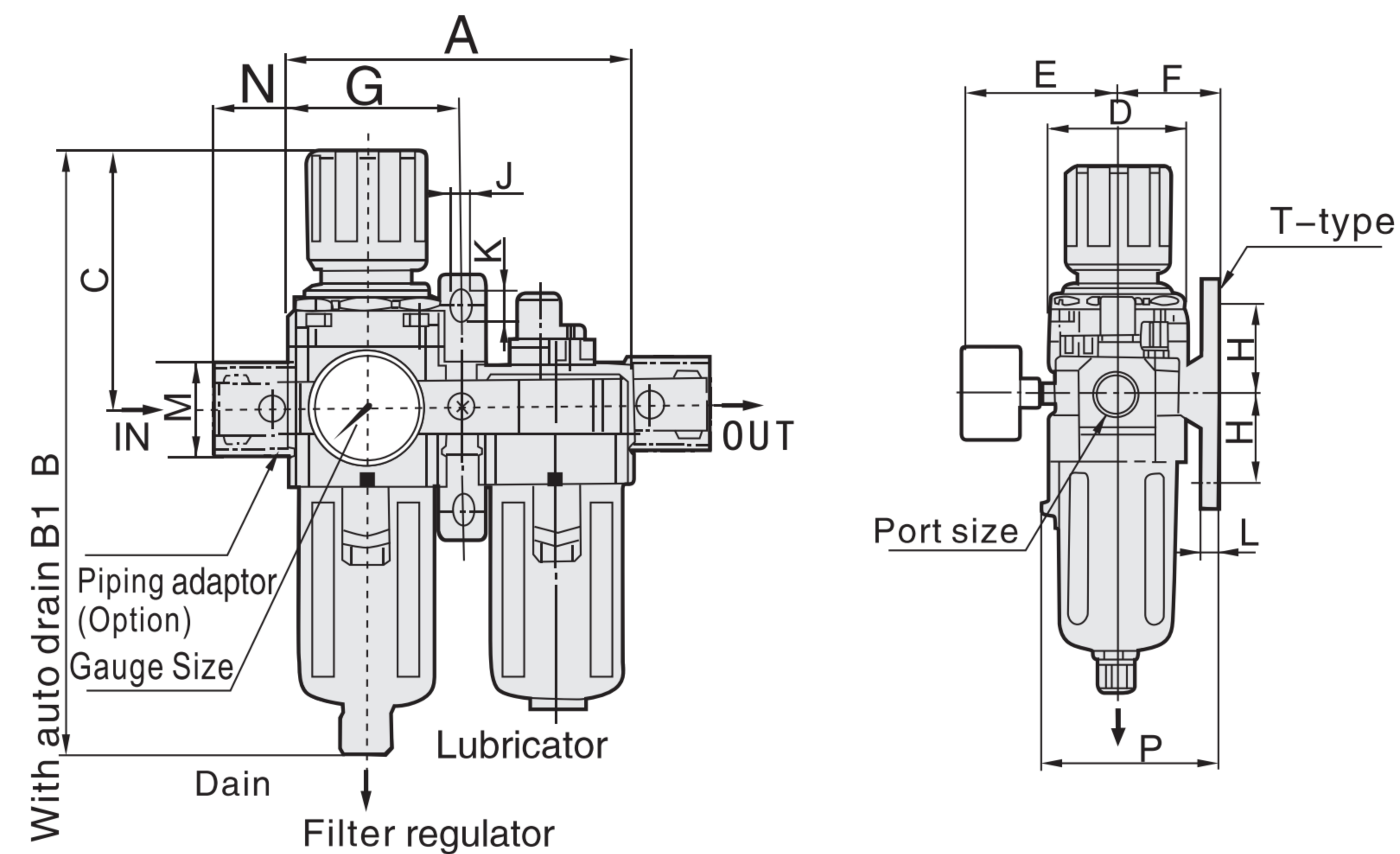
* NPT,PT port size is optional

Main Dimension

EC1010-EC2010



EC3010-EC5010



Model	Port Size (G)	A	B	B1	C	D	E	F	G	H	J	K	L	M	N	P
EC1010	M5	58	109.5	-	50.5	25	26	25	29	20	4.5	7.5	5	17.5	16	38.5
EC2010	1/8"-1/4"	90	162	200	76	40	53	29.5	45	24	5.5	8.5	5	22	23	50
EC3010	1/4"-3/8"	116	210.5	224.5	92	53	51	40	58.5	35	7.5	11	7.2	34.2	26	69.5
EC4010	1/4"-3/8"	154	264	267	113.5	70	67	49.5	77	40	9	13	7.2	42.2	33	88
EC4010-06	3/4"	164	268	271	115	70	67	49.5	82	40	9	13	7.2	46.2	36	88
EC5010	3/4"-1"	195	343	348	116.5	90	72	68.5	97.5	50	12	16	10.5	55.2	40	115