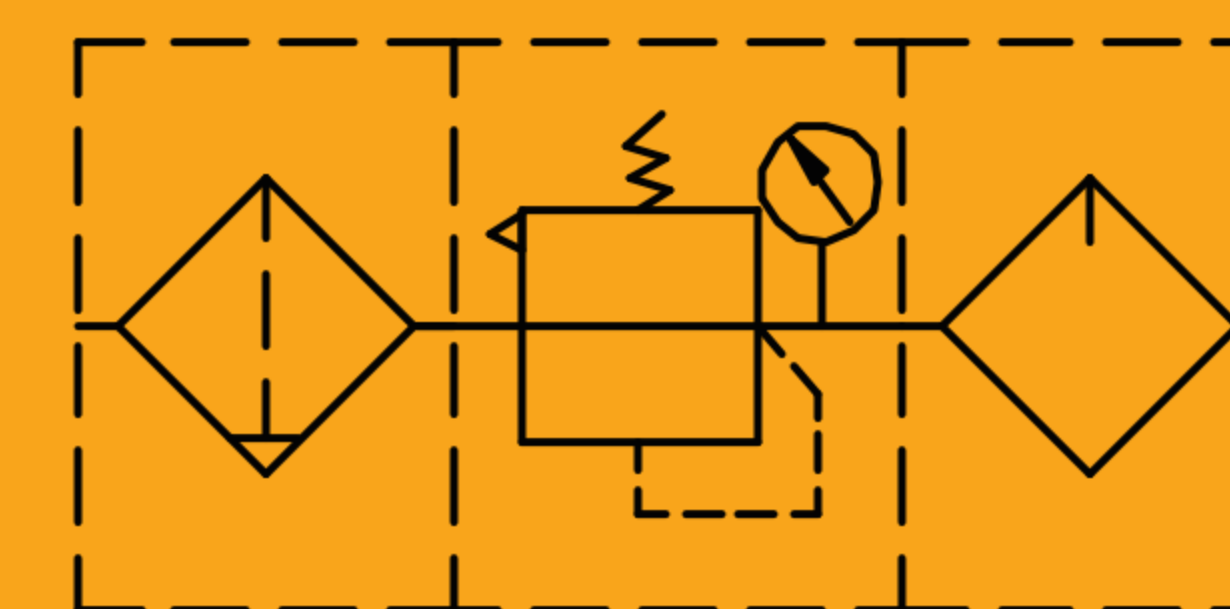


## EAC2000 EAC3000 EAC4000

F.R.L Unit



### Specifications

| Model                          | EAC2000-01                           | EAC2000-02 | EAC3000-02 | EAC3000-03 | EAC3000-04 | EAC4000-03 | EAC4000-04 | EAC4000-06 |            |
|--------------------------------|--------------------------------------|------------|------------|------------|------------|------------|------------|------------|------------|
| Working Medium                 | Clean Air(after 40 μ m filtration)   |            |            |            |            |            |            |            |            |
| Proof Pressure(MPa)            | 1.5                                  |            |            |            |            |            |            |            |            |
| Working Pressure Range(MPa)    | 0.15~1.0                             |            |            |            |            |            |            |            |            |
| Pressure Adjustment Range(MPa) | 0.05~0.9, Low pressure type 0.05~0.4 |            |            |            |            |            |            |            |            |
| Working Temperature(°C)        | -5~60 ( No freezing )                |            |            |            |            |            |            |            |            |
| Filter Precision               | 40 μ m/5 μ m optional                |            |            |            |            |            |            |            |            |
| Recommended Oil                | Turbine No.1 Oil, ISO VG32           |            |            |            |            |            |            |            |            |
| Bowl Material                  | PC(Polycarbonate)                    |            |            |            |            |            |            |            |            |
| Water Bowl Capacity(CC)        | 11                                   |            | 40         |            |            | 75         |            |            |            |
| Oil Bowl Capacity(CC)          | 30                                   |            | 76         |            |            | 183        |            |            |            |
| Weight(g)                      | 551                                  |            | 1245       |            |            | 2284       |            |            |            |
| Component                      | Filter                               | EAF2000-01 | EAF2000-02 | EAF3000-02 | EAF3000-03 | EAF3000-04 | EAF4000-03 | EAF4000-04 | EAF4000-06 |
|                                | Regulator                            | EAR2000-01 | EAR2000-02 | EAR3000-02 | EAR3000-03 | EAR3000-04 | EAR4000-03 | EAR4000-04 | EAR4000-06 |
|                                | Lubricator                           | EAL2000-01 | EAL2000-02 | EAL3000-02 | EAL3000-03 | EAL3000-04 | EAL4000-03 | EAL4000-04 | EAL4000-06 |

### How to Order?

| Series No.                          | Port Size  | Drain Type  | Type No.             | Pressure Gauge                                     | Pressure Gauge Type                                 | Scale Unit | Filter Precision           | Thread Type                 |                                |                            |
|-------------------------------------|--|---|----------------------|--|---|------------|----------------------------|-----------------------------|--------------------------------|----------------------------|
| EAC2000:EA2000 series<br>F.R.L Unit | 2000<br>01: 1/8"<br>02: 1/4"<br>02: 1/4"<br>3000<br>03: 3/8"<br>04: 1/2"<br>4000<br>03: 3/8"<br>04: 1/2"<br>06: 3/4" | Blank: Manual drain type<br>C: Semi-anto drain<br>D: Auto Drain type① | Blank: Standard type | Blank: With pressure gauge<br>N: No pressure gauge | F: Square pressure gauge<br>Y: Round pressure gauge | ②          | Blank: 40 μ m<br>5M: 5 μ m | Blank: G<br>P: PT<br>T: NPT |                                |                            |
| EAC3000:EA3000 series<br>F.R.L Unit |  |   |                      |  |   |            |                            |                             |                                |                            |
| EAC4000:EA4000 series<br>F.R.L Unit |  |   |                      |  |   |            |                            |                             |                                |                            |
|                                     |  |   |                      |  |   |            |                            |                             | Square pressure gauge optional | 1: MPa<br>2: Bar<br>3: Psi |
|                                     |  |   |                      |  |   |            |                            |                             | Round pressure gauge optional  | 4: Mpa/Psi<br>5: Bar/Psi   |
|                                     |  |   |                      |  |   |            |                            |                             |                                |                            |

#### Order Example:

EA series F.R.L unit, port size of 1/2", differential pressure drain type, with square pressure gauge, Mpa, 5 μ m, G thread, the ERP code: EAC3000-04CF15M

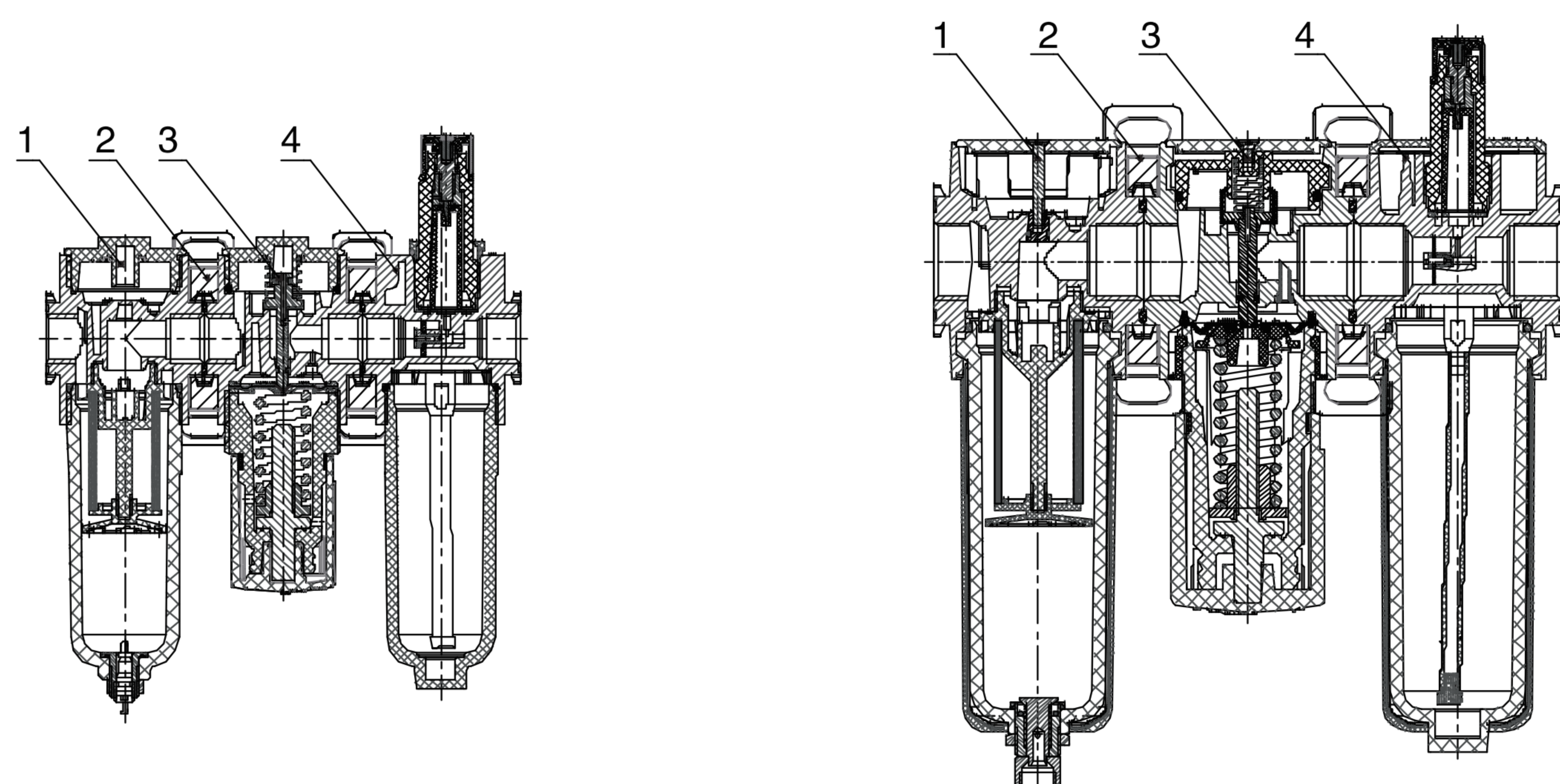
Remark: ①2000 series without automatic drainage type

②Square pressure gauge is single scale, round pressure gauge is double scale.

# EA Series Air Preparation Unit



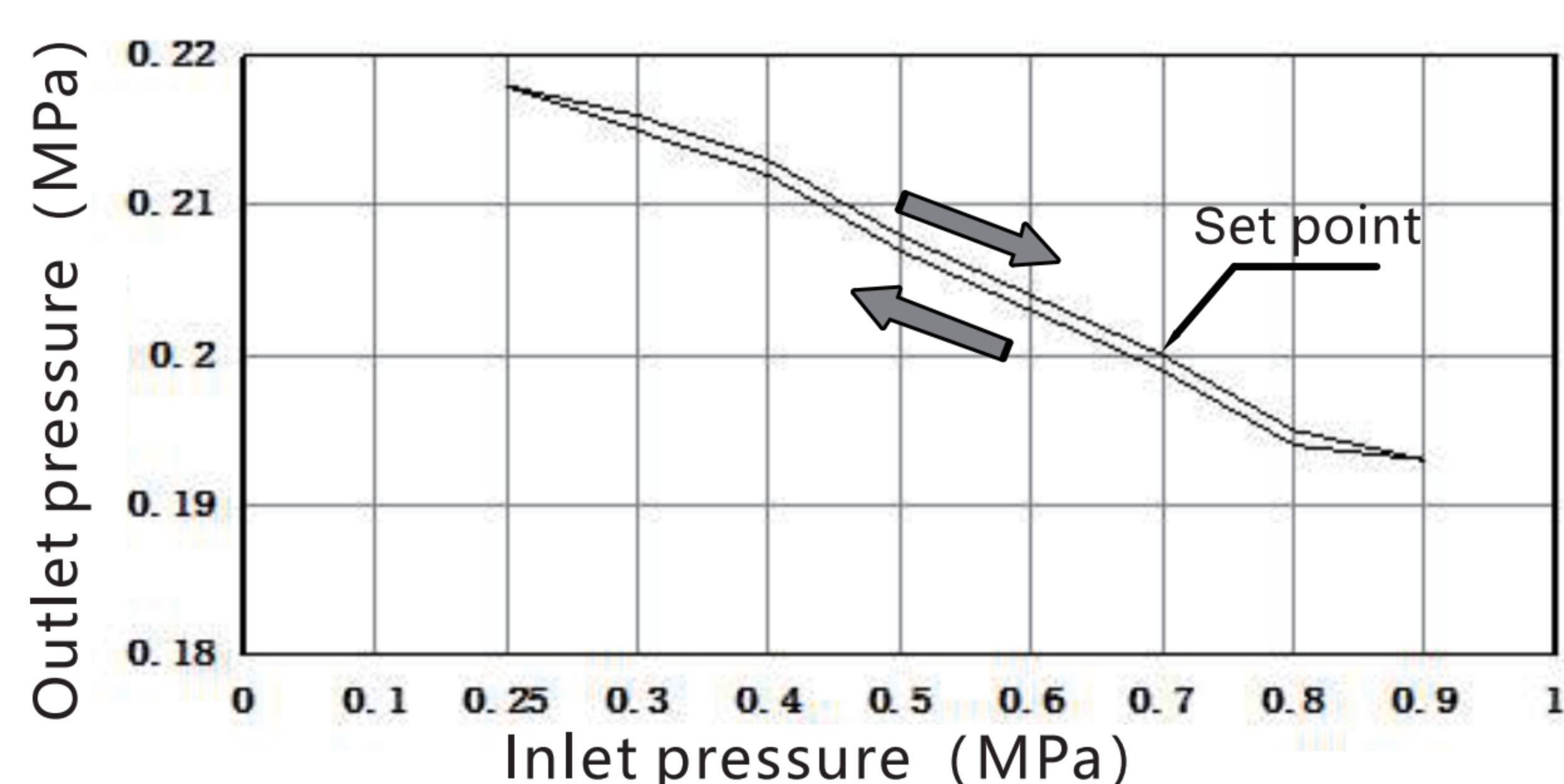
## Internal Structure



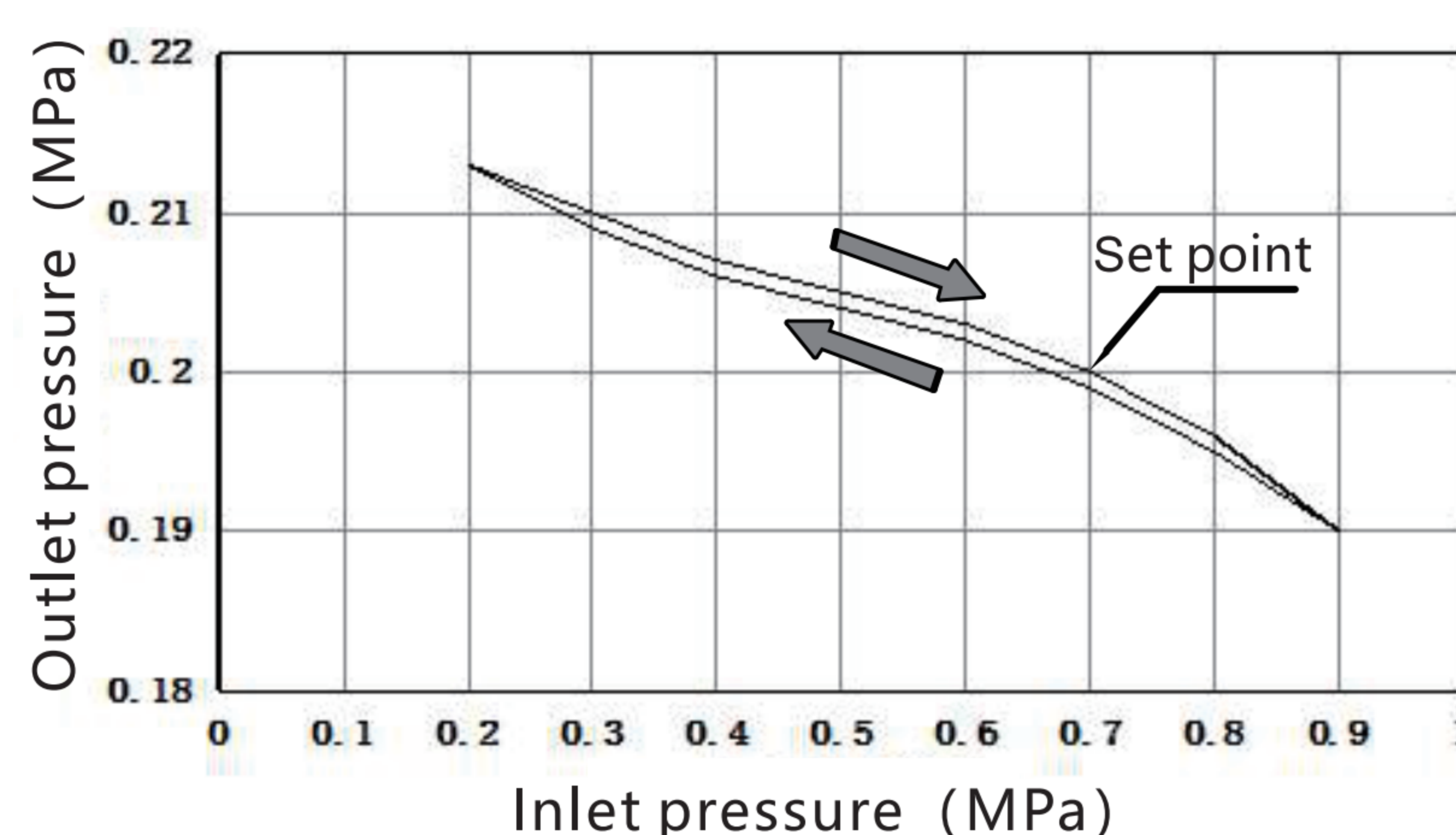
| No. | Part Name            |
|-----|----------------------|
| 1   | EA series filter     |
| 2   | T type bracket       |
| 3   | EA series regulator  |
| 4   | EA series lubricator |

## Pressure Feature

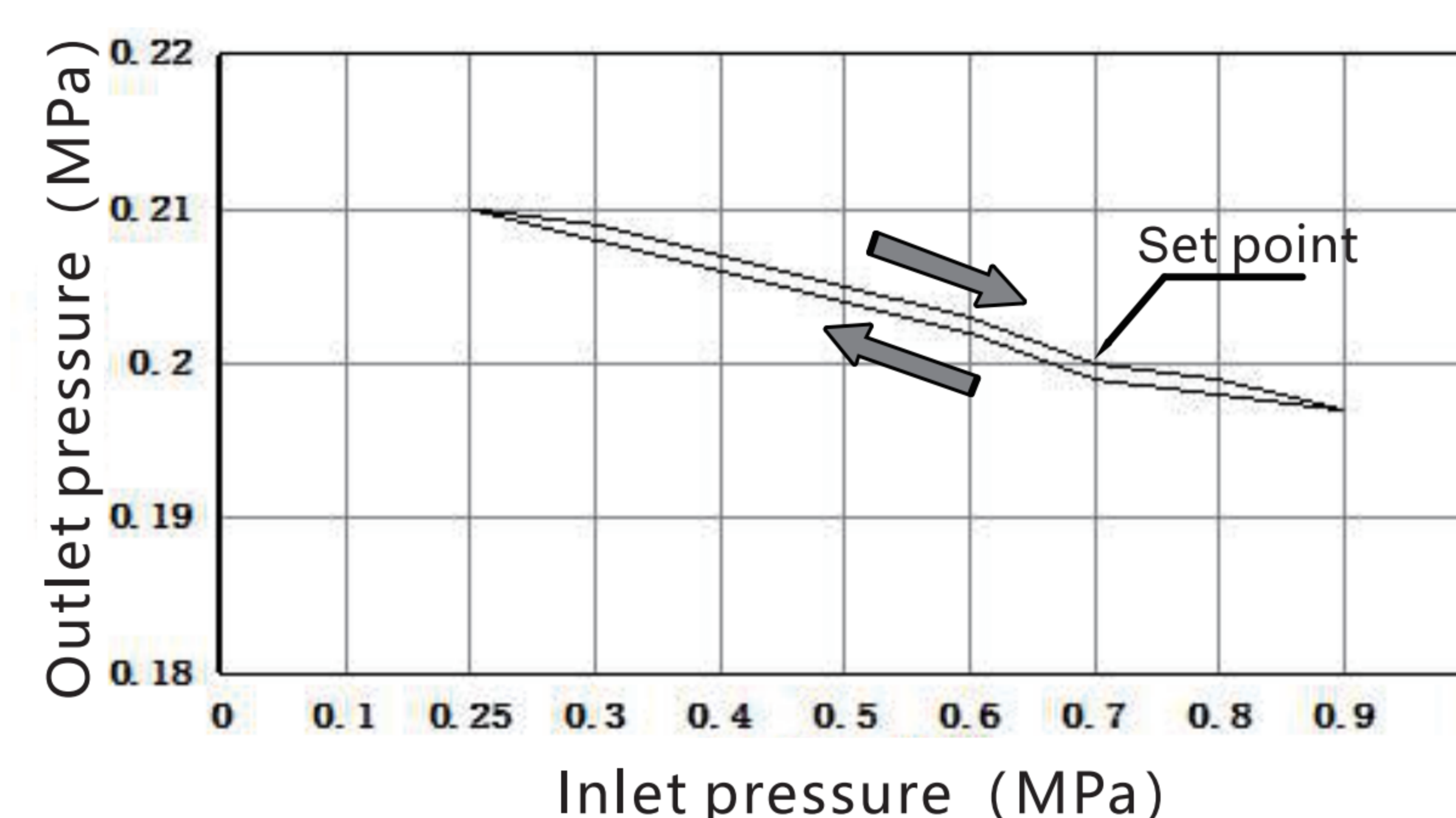
EAC2000



EAC3000

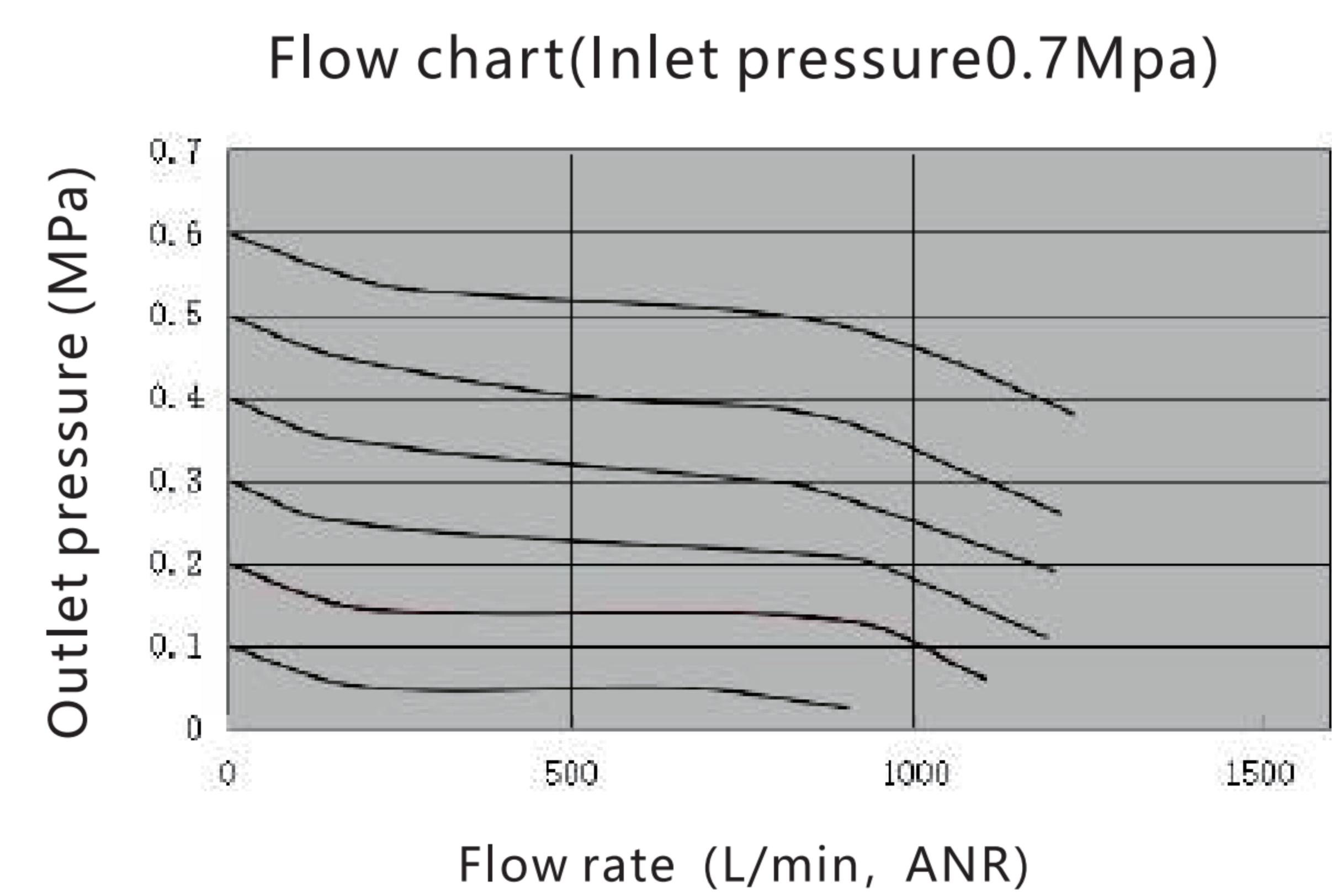


EAC4000

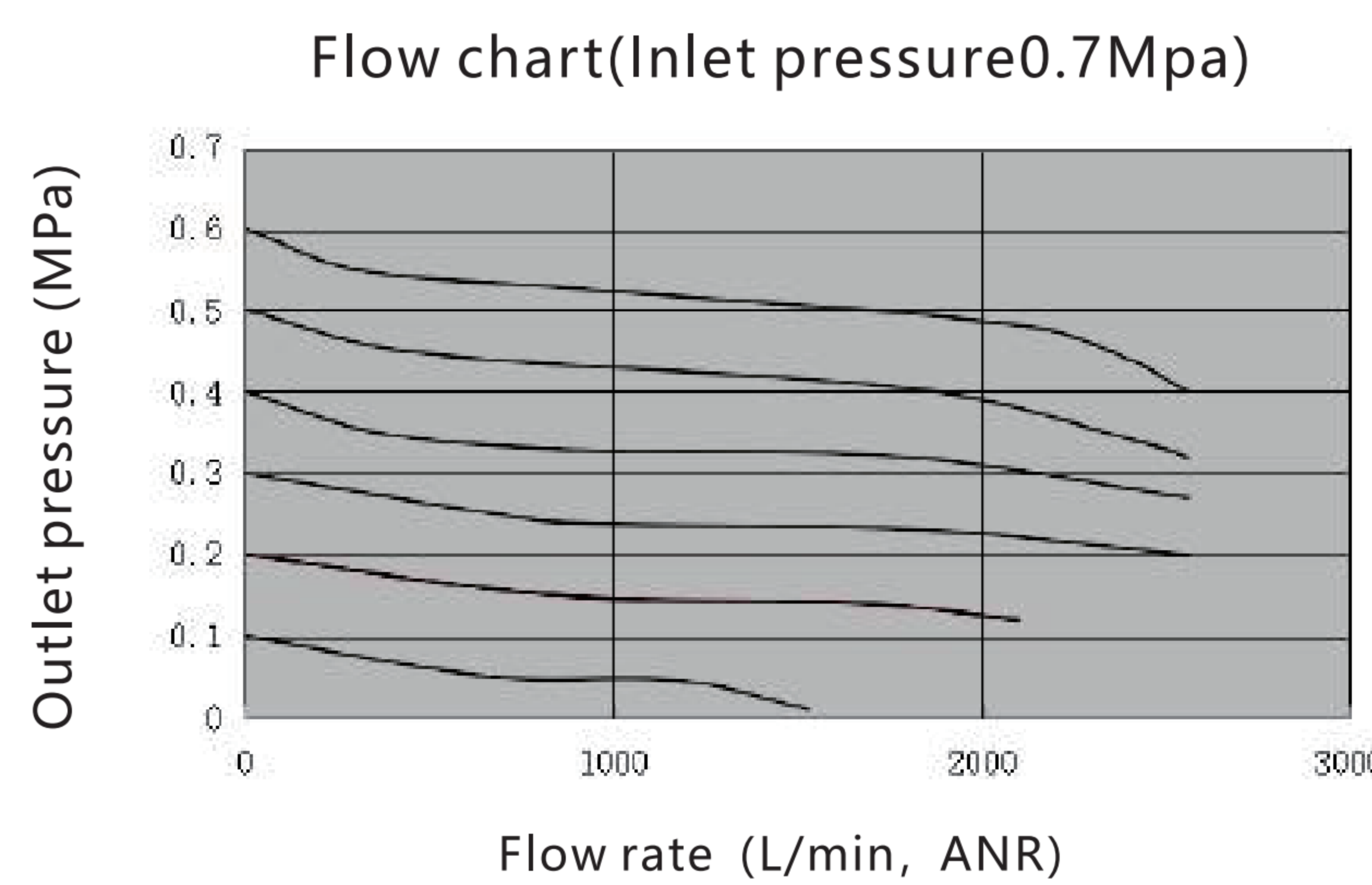


## Flow Chart

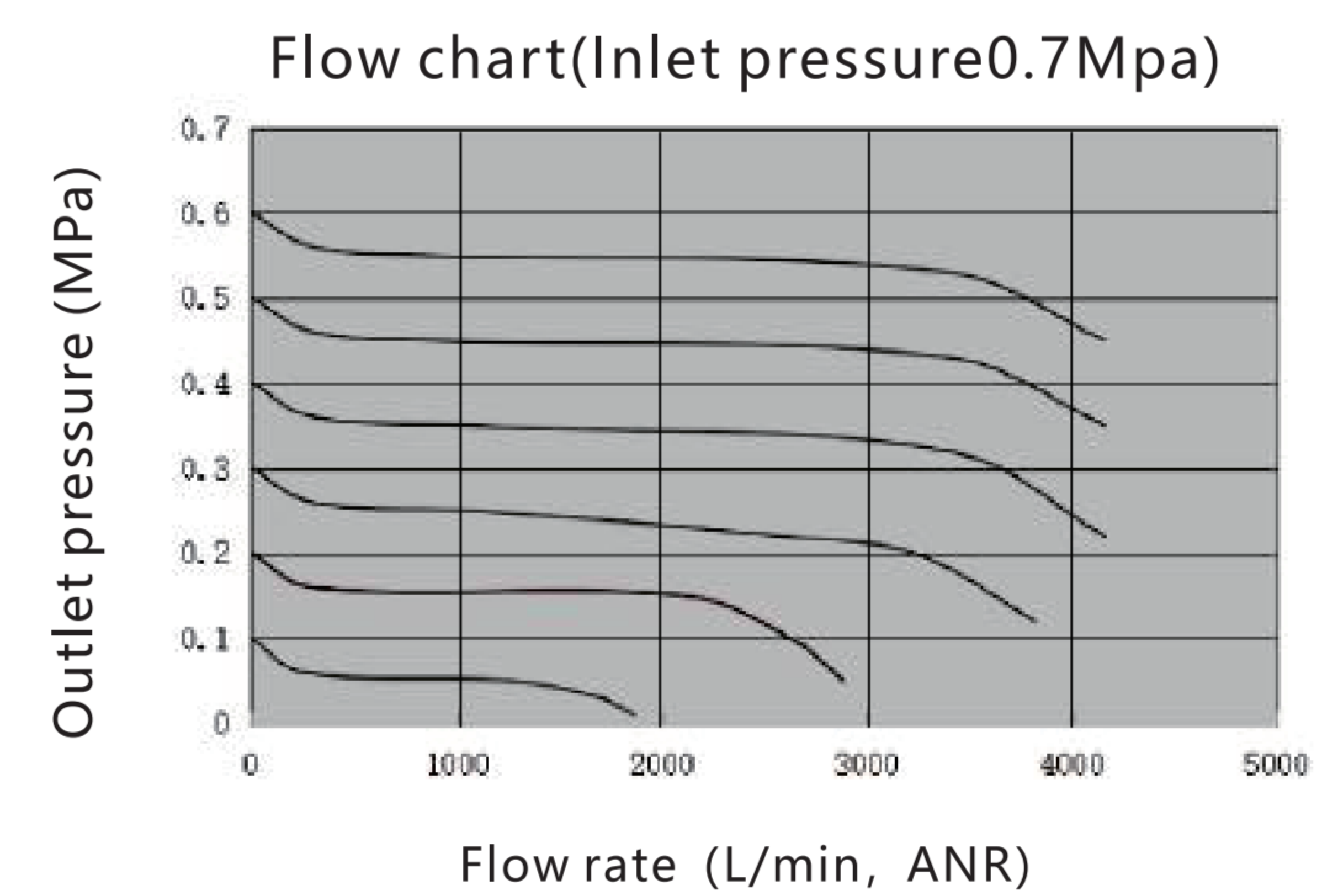
EAC2000



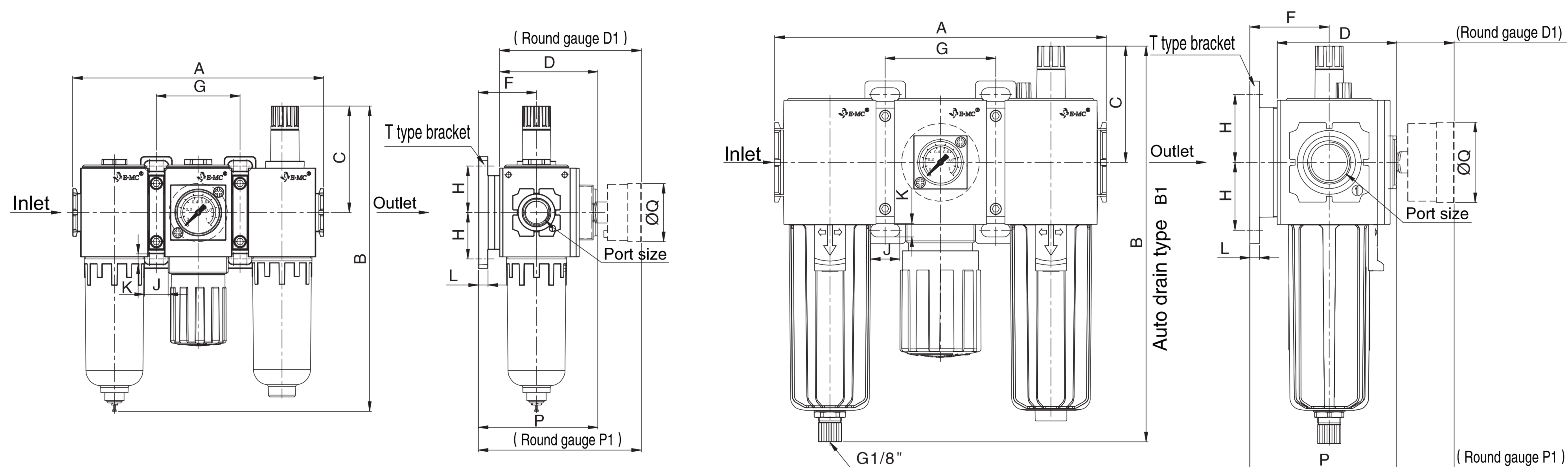
EAC3000



EAC4000



## Main Dimensions



| Model   | Port Size        | A   | B     | B1    | C    | D    | D1    | F  | G  | H  | J    | K   | L | P    | P1    | Q    |
|---------|------------------|-----|-------|-------|------|------|-------|----|----|----|------|-----|---|------|-------|------|
| EAC2000 | 1/8", 1/4"       | 129 | 157.5 | -     | 54.9 | 73   | 73    | 30 | 43 | 24 | 12.5 | 5.5 | 5 | 61.6 | 84    | 30   |
| EAC3000 | 1/4", 3/8", 1/2" | 171 | 204.2 | 201.5 | 60   | 61.6 | 91.2  | 41 | 57 | 35 | 15   | 7   | 5 | 75.8 | 105.4 | 41.5 |
| EAC4000 | 3/8", 1/2", 3/4" | 240 | 227.8 | 222.1 | 63   | 82.1 | 110.7 | 50 | 80 | 40 | 18   | 9   | 7 | 95.3 | 123.8 | 41.5 |

5  
EAC