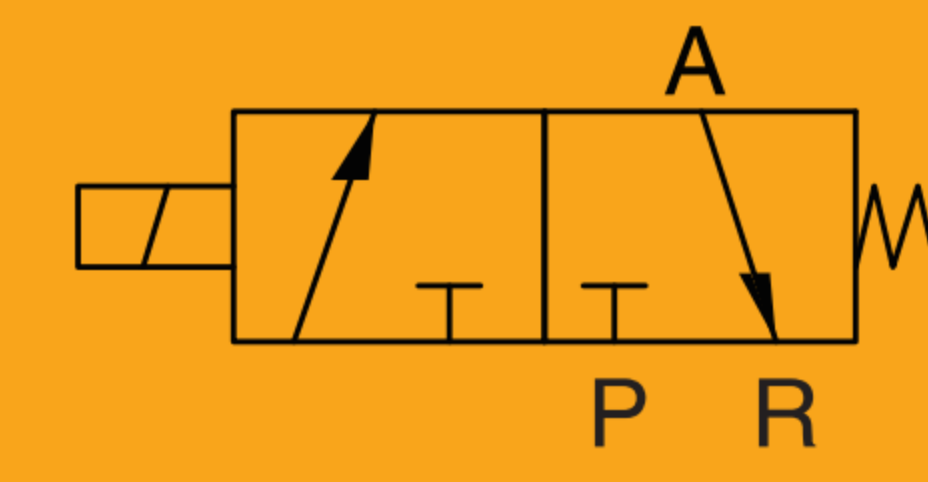


RVT

Standard/Low Power Solenoid Valve (3/2)



Product Features

- *Direct Acting, Normal Close, Sensitive Response ;
- *Same pilot units as RV valve , High temperature resistance by HNBR seals ,longer working life ;
- *Integrated body with grey surface oxidation , Easy installation ;
- *Multiple valtage and Energy-Saving are optional ;
- *Multiple connection mode are optional.

How to Order?

Low Power Solenoid Valve

Series No.	Valve Body ID code	ID Code	Positions	Ways	Controls	Port Size	Voltage	Connection Mode	Cover Color	Thread Type	Patchcord	Valves
N	T: Integrated body		2: 2 positions	3: 3 ways	1: Single control	06: 1/8"	E1: AC110V E2: AC220V E4: DC24V	Blank: DIN connector type L: Plug-in Type K: Water proof connector type	Blank: Brown translucent J: Colorless and translucent B: Black (Only black color available for water proof connector)	Blank: G P: PT T: NPT		2F: 2 Valves 3F: 3 Valves 13F: 13 Valves
	R: Standard armature +Energy saving coil										Blank: Patchcord length is 0.3 meter 0.6M: Patchcord length is 0.6 meter 1M: Patchcord length is 1 meter (Options for "L: Plug-in type" Only)	

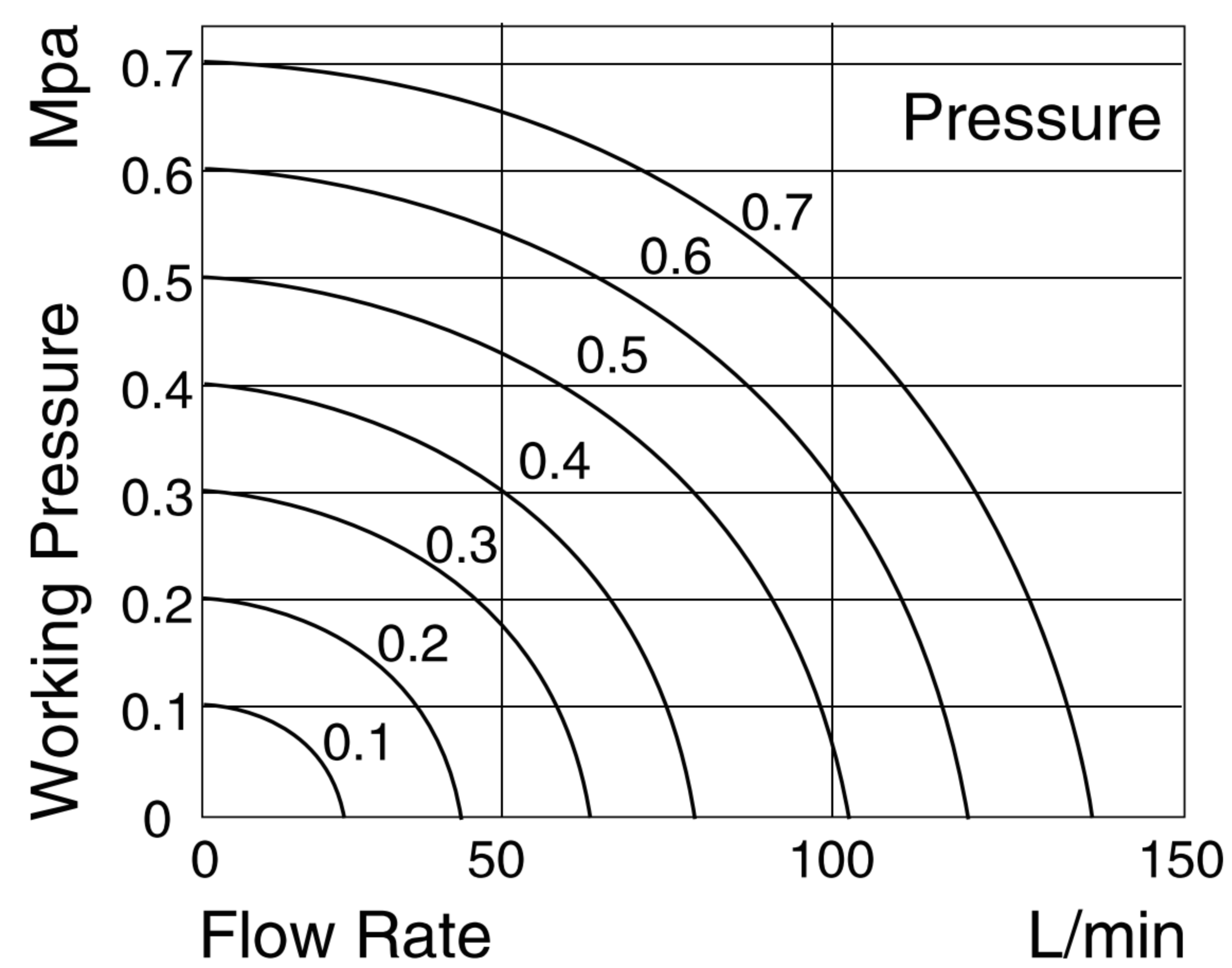
Standard Solenoid Valve

Series No.	Ways	Positions	Controls	Port Size	ID Code	Voltage	Connection Mode	Cover Color	Thread Type	Patchcord	Valves
RVT	3: 3 ways	2: 2 positions	1: Single control	06: 1/8"	Blank: Standard type		Blank: DIN connector L: Plug-in Type F: Flying leads K: Waterproof DIN connector (Only 2, 3, 4 series is optional for K/M)	Blank: Brown translucent J: Colorless and translucent B: Black (Only black color available for water proof connector)	Blank: G P: PT T: NPT		2F: 2 Valves 3F: 3 Valves 13F: 13 Valves
						E1: AC110V E6: AC36V E2: AC220V E7: AC24V E3: AC380V E8: DC110V E4: DC24V E9: DC48V E5: DC12V E10: DC36V				Blank: Patchcord length is 0.3 meter 0.6M: Patchcord length is 0.6 meter 1M: Patchcord length is 1 meter (Options for "L: Plug-in type" and "F: Flying leads type" Only)	

Order Example:

RVT series solenoid valve, 3/2 way, single control, 1/8" port size, AC110V, DIN connector, G thread, ERP code is: RVT321-06E1-5F

Flow Chat



Specifications

Model No.	NTR231-06	RVT321-06
Working medium	Clean air (After 40 μm filtration)	
Acting type	Direct acting	
Orifice (mm)	1.2	
Port size	G 1/8	
Lubrication	Not required	
Working pressure (MPa)	0~0.8	
Guaranteed pressure (MPa)	1.2	
Working temperature (°C)	-20~70	
Voltage range	-15% - +10%	
Power consumption	DC24V:0.7W AC220V:0.9VA AC110V:1.4VA	AC:4VA DC:3W
Insulation class	Class F	
Protective class	IP65 (DIN40050)	
Max. acting frequency	10 cycles/s	
Seal material	HNBR	
Activate time	0.05s below	
Weight (g)	Each valve increases at 141g	Each valve increases at 138g

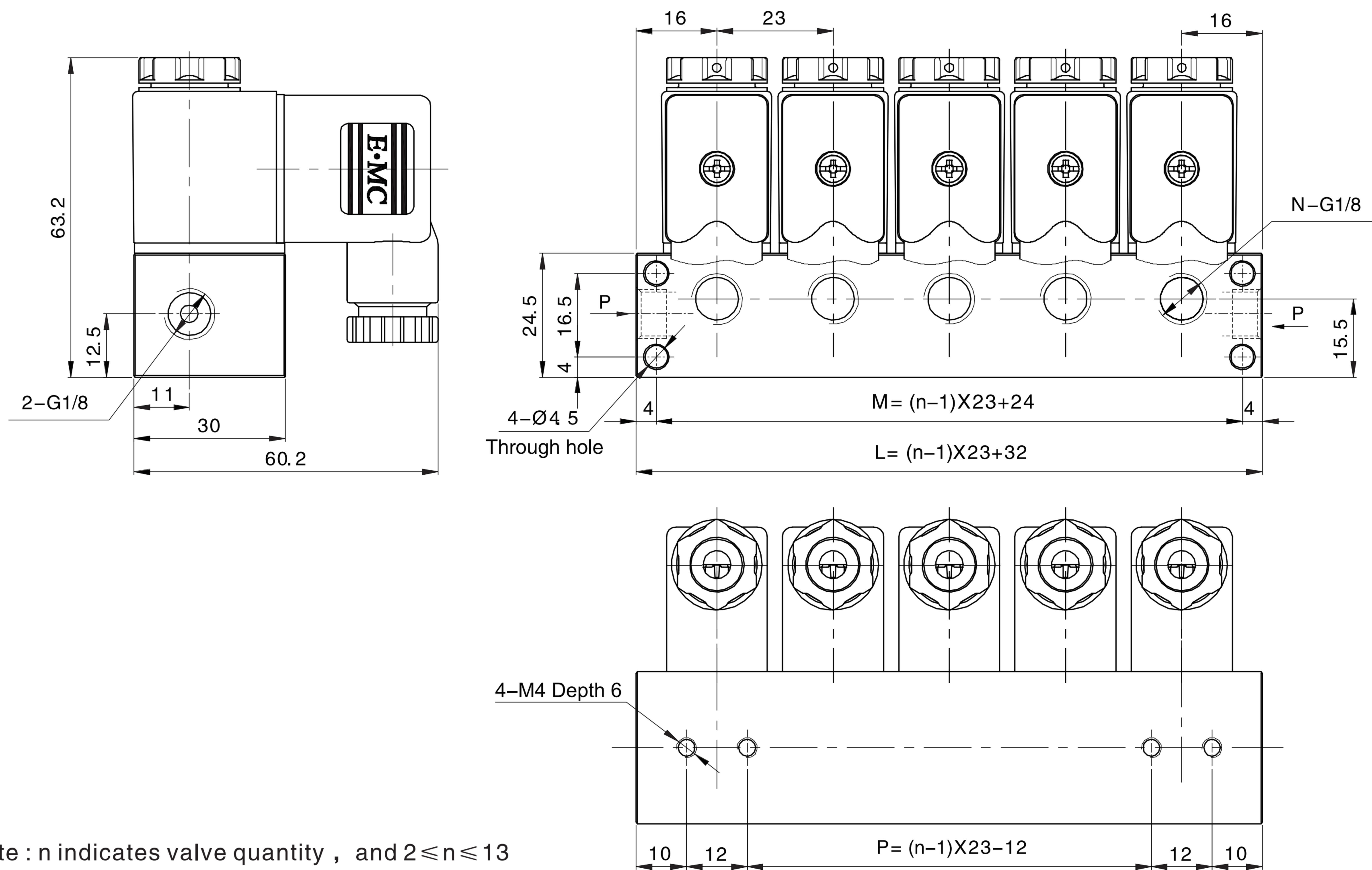
RVT Series Standard/Low Power Solenoid Valve (3/2 way)



1

RVT

◎ Main Dimension



Note : n indicates valve quantity , and $2 \leq n \leq 13$

Sign/Valves	2Valves	3Valves	4Valves	5Valves	6Valves	7Valves	8Valves	9Valves	10Valves	11Valves	12Valves	13Valves
L	55	78	101	124	147	170	193	216	239	262	285	308
M	47	70	93	116	139	162	185	208	231	254	277	300
P	11	34	57	80	103	126	149	172	195	218	241	264